

Biagio d'Antonio, c. 1446-1516
Portrait of a Boy



KRESS CATALOGUE NUMBER

K326

IDENTIFIER

1662

ARTIST

Biagio d'Antonio, c. 1446-1516

NATIONALITY

Italian

DATE

c. 1476/1480

MEDIUM

oil and tempera on poplar panel

TYPE OF OBJECT

Painting

DIMENSIONS

41.9 x 35.9 cm (16 1/2 x 14 1/8 in)

LOCATION

National Gallery of Art, Washington, District of Columbia

PROVENANCE

(Walter Schnackenberg, Munich), by April 1925. [1] (F. Kleinberger, Paris and New York), by 1927. [2] Private collection, New York. [3] (Count Alessandro Contini-Bonacossi, Florence), by 1929; [4] sold 26 June 1935 to the Samuel H. Kress Foundation, New York; [5] gift 1939 to NGA. [1] According to a hand-written notes by Bernard Berenson on the back of a photograph of the painting in the I Tatti archive in Florence (copy in NGA curatorial files). [2] Kleinberger lent the painting to a 1927 exhibition at The Lotos Club. [3] Raimond Van Marle, *The Development of the Italian Schools of Painting*, The Hague, 1931: 13:180, fig. 119, relates that he saw the painting "in a private collection in New York," but does not specify when. [4] An opinion written by Roberto Longhi and dated October 1929 was addressed to Contini-Bonacossi (copy and translation in NGA curatorial files). [5] The bill of sale was for seven paintings and a number of decorative art objects; NGA 1939.1.179 was identified as "Florentine about 1475" (copy in NGA curatorial

KRESS COLLECTION DIGITAL ARCHIVE

files).

ACCESSION NUMBER

1939.1.179

KRESS NUMBER

326

LEGACY NGA NUMBER

290

1 ACQUISITION

Contini Bonacossi, Alessandro, June 26, 1935

1 DISTRIBUTION

Gift to National Gallery of Art, June 29, 1939

EXTERNAL LINKS**Related Collection Record**

<https://www.nga.gov/collection/art-object-page.320.html>

Related National Gallery of Art Library Image Collections Record

https://library.nga.gov/permalink/01NGA_INST/1p5jkvq/alma991093623804896

Related National Gallery of Art Systematic Catalog

https://library.nga.gov/permalink/01NGA_INST/1cl1g8d/alma992014793504896

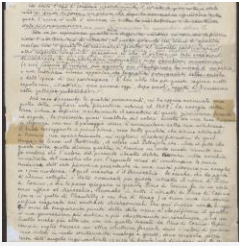
17 ARCHIVAL ITEMS

K0326 - Expert opinion by Berenson, circa 1920s-1950s



K0326 - Expert opinion by Marle, circa 1920s-1930s

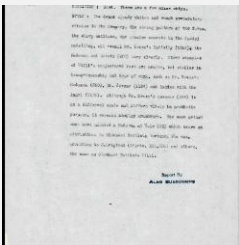
KRESS COLLECTION DIGITAL ARCHIVE



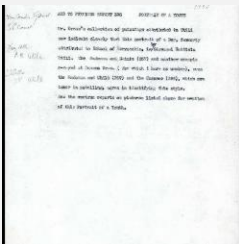
K0326 - Expert opinion by Longhi, 1929



K0326 - Alan Burroughs report, circa 1930s-1940s



K0326 - Alan Burroughs report, circa 1930s-1940s



K0326 - Alan Burroughs report, circa 1930s-1940s



K0326 - Art object record, circa 1930s-1950s

KRESS COLLECTION DIGITAL ARCHIVE



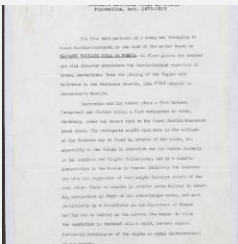
K0326 - Alan Burroughs report, circa 1930s-1940s



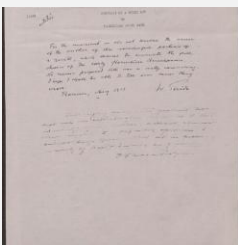
K0326 - Alan Burroughs report, circa 1930s-1940s



K0326 - Expert opinion by Fiocco, 1935



K0326 - Expert opinion by Offner, 1935



K0326 - Expert opinion by Perkins et al., 1935

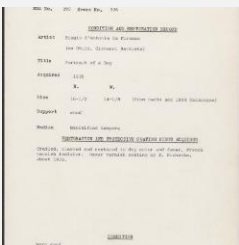
KRESS COLLECTION DIGITAL ARCHIVE



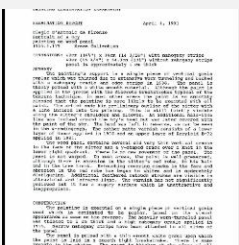
K0326 - Expert opinion by A. Venturi, 1935



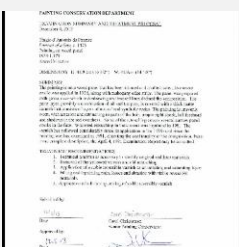
K0326 - Work summary log, 1943-1944



K0326 - Condition and restoration record, circa 1950s-1960s



K0326 - Examination summary, 1991



K0326 - Examination summary and treatment proposal, 2013

RECORD LINK

<https://kress.nga.gov/Detail/objects/1662>