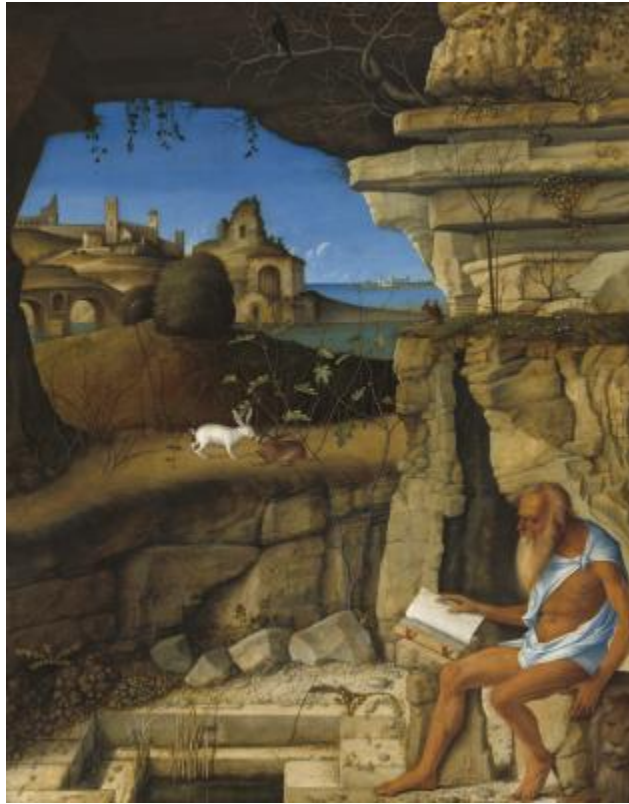


Giovanni Bellini, c. 1430/1435-1516
Saint Jerome Reading



KRESS CATALOGUE NUMBER

K406

IDENTIFIER

1853

ARTIST

Bellini, Giovanni, c. 1430/1435-1516

NATIONALITY

Italian

DATE

1505

MEDIUM

oil on lindenwood panel

TYPE OF OBJECT

Painting

DIMENSIONS

painted surface: 47 x 37.5 cm (18 1/2 x 14 3/4 in)

LOCATION

National Gallery of Art, Washington, District of Columbia

PROVENANCE

Frederick John Monson, 5th baron Monson [1809-1841], Gatton Park, near Reigate, Surrey; by inheritance to his cousin, William John Monson, 6th baron Monson [1796-1862], Gatton Park and Burton Hall, Lincolnshire; by inheritance to his son, William John Monson, viscount Oxenbridge and 7th baron Monson [1829-1898], Burton Hall, Lincolnshire; (Monson sale, Christie, Manson & Woods, London, 12 May 1888, no. 12); purchased by Murray [probably Charles Fairfax Murray [1849-1919, London and Florence]. Charles Butler [1822-1910], London and Warren Wood, Hatfield, Hertford; purchased 1891 by Robert Henry [1850-1929] and Evelyn Holford [1856-1943] Benson, London and Buckhurst Park, Sussex; sold 1927 to (Duveen Brothers, Inc., London and New York); sold 1 October 1928 to Clarence H. Mackay [1874-1938], Roslyn, New York; [1] (Duveen Brothers, Inc., London and New York); sold May 1936 to the Samuel H. Kress Foundation, New York; [2] gift 1939 to NGA. [1] Duveen Brothers Records, accession

KRESS COLLECTION DIGITAL ARCHIVE

number 960015, Special Collections, Getty Research Institute, Los Angeles, Series I Business Records, New York Sales Lists 1922-1928. [2] The Duveen Brothers letter confirming the sale of thirteen paintings and one sculpture, including NGA 1939.1.217, is dated 18 May 1936; the provenance is given as "Benson Coll'n" (copy in NGA curatorial files; Box 474, Folder 5, Duveen Brothers Records, accession number 960015, Research Library, The Getty Research Institute, Los Angeles).

ACCESSION NUMBER

1939.1.217

KRESS NUMBER

406

PICHETTO NUMBER

8894

LEGACY NGA NUMBER

328

1 ACQUISITION

Duveen Brothers, 1936

1 DISTRIBUTION

Gift to National Gallery of Art, June 29, 1939

EXTERNAL LINKS

Related Collection Record

<https://www.nga.gov/collection/art-object-page.358.html>

Related National Gallery of Art Library Image Collections Record

https://library.nga.gov/permalink/01NGA_INST/1p5jkvq/alma99121813804896

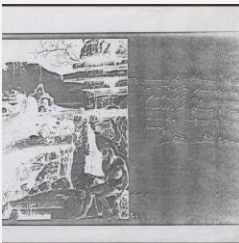
Related National Gallery of Art Systematic Catalog

https://library.nga.gov/permalink/01NGA_INST/1cl1g8d/alma992014793504896

16 ARCHIVAL ITEMS



K0406 - Expert opinion by Berenson, circa 1920s-1950s



K0406 - Expert opinion by Berenson, circa 1920s-1950s

KRESS COLLECTION DIGITAL ARCHIVE



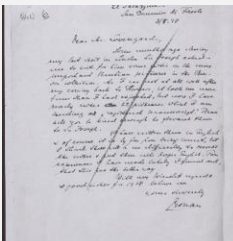
K0406 - Expert opinion by Longhi, circa 1920s-1950s



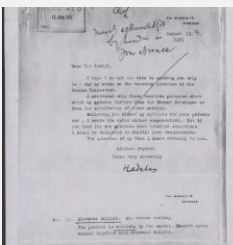
K0406 - Expert opinion by Perkins, circa 1920s-1940s



K0406 - Expert opinion by A. Venturi, circa 1920s-1930s

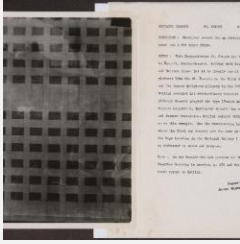


K0406 - Expert opinion by Gronau, 1928

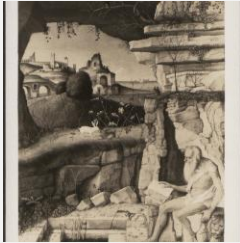


K0406 - Expert opinion by Hadeln, 1905

KRESS COLLECTION DIGITAL ARCHIVE



K0406 - Alan Burroughs report, circa 1930s-1940s



K0406 - Art object record, circa 1930s-1950s



K0406 - Expert opinion by Fiocco, 1938



K0406 - Expert opinion by Suida, 1938



K0406 - Work summary log, 1942-1960

