

Dosso Dossi, active 1512-1542
Saint Lucretia



KRESS CATALOGUE NUMBER

K1129

IDENTIFIER

1869

ARTIST

Dossi, Dosso, active 1512-1542

NATIONALITY

Italian

DATE

c. 1520

MEDIUM

oil on panel

TYPE OF OBJECT

Painting

DIMENSIONS

original panel: 51.8 x 40.7 x 1.2 cm 20 3/8 x 16 x 1/2 in

LOCATION

National Gallery of Art, Washington, District of Columbia

PROVENANCE

Probably commissioned by Alfonso I d'Este, Duca di Ferrara. Cardinal Antonio Barberini [d.1671], Rome; [1] by inheritance to Maffeo Barberini [d.1685], Principe di Palestrina, Rome; [2] Ugo Ferraguti [1885-1938], Palazzo Rospigliosi, Rome; (Ferraguti sale, Galleria Tavazzi, Rome, 12-24 December 1932, no. 390). Dr. A. Porcella, Rome, by 1933. [3] (Jacob M. Heimann, New York); sold 1938 to the Samuel H. Kress Foundation, New York; gift 1939 to NGA. [1] Recorded in posthumous inventories of 1671 and 1672. [2] Recorded in inventories of post-1672 and posthumous inventory of 1686. [3] Lent by Porcella to 1933 exhibition in Ferrara.

KRESS COLLECTION DIGITAL ARCHIVE

ACCESSION NUMBER

1939.1.388

KRESS NUMBER

1129

PICHETTO NUMBER

9590

LEGACY NGA NUMBER

481

1 ACQUISITION

Heimann, Jacob, March 1, 1938

1 DISTRIBUTION

Gift to National Gallery of Art, June 29, 1939

EXTERNAL LINKS**Related Collection Record**

<https://www.nga.gov/collection/art-object-page.532.html>

Related National Gallery of Art Library Image Collections Record

https://library.nga.gov/permalink/01NGA_INST/1p5jkvq/alma991597073804896

13 ARCHIVAL ITEMS

K1129 - Expert opinion by Berenson, circa 1920s-1950s



K1129 - Expert opinion by Longhi, circa 1920s-1950s

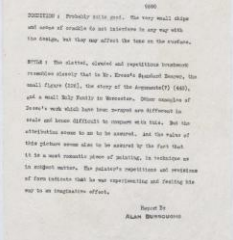


K1129 - Expert opinion by Perkins, circa 1920s-1940s

KRESS COLLECTION DIGITAL ARCHIVE



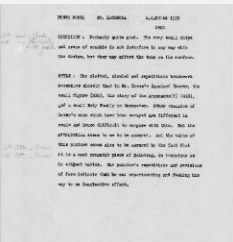
K1129 - Expert opinion by A. Venturi, circa 1920s-1930s



K1129 - Alan Burroughs report, circa 1930s-1940s



K1129 - Art object record, circa 1930s-1950s



K1129 - Alan Burroughs report, circa 1930s-1940s



K1129 - Expert opinion by Fiocco, 1938

KRESS COLLECTION DIGITAL ARCHIVE



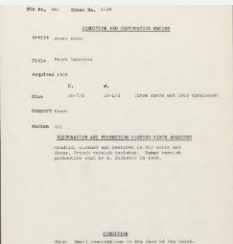
K1129 - Expert opinion by Suida, 1939



K1129 - Expert opinion by A. Venturi, 1938



K1129 - Work summary log, 1943



K1129 - Condition and restoration record, circa 1950s-1960s



K1129 - Examination summary, 1998

RECORD LINK

<https://kress.nga.gov/Detail/objects/1869>