

Rosalba Carriera, 1675-1757
Sir John Reade, Baronet



KRESS CATALOGUE NUMBER

K149

IDENTIFIER

1993

ARTIST

Carriera, Rosalba, 1675-1757

NATIONALITY

Italian

DATE

1739

MEDIUM

pastel

TYPE OF OBJECT

Drawing

DIMENSIONS

58 x 46 cm (22 13/16 x 18 1/8 in)

LOCATION

National Gallery of Art, Washington, District of Columbia

PROVENANCE

Reade family, London; (sale, Christie's London, 13 July 1895, no. 5); Charles Fairfax Murray, Florence; Count Alessandro Contini-Bonacossi [1878-1955]; sold 15 July 1931 to the Samuel H. Kress Foundation, New York; gift 1939 to NGA.

ACCESSION NUMBER

1939.1.66

KRESS NUMBER

149

PICHETTO NUMBER

7516

LEGACY NGA NUMBER

177

1 ACQUISITION

Contini Bonacossi, Alessandro, July 15, 1931

1 DISTRIBUTION

Gift to National Gallery of Art, June 29, 1939

EXTERNAL LINKS

Related Collection Record

<https://www.nga.gov/collection/art-object-page.207.html>

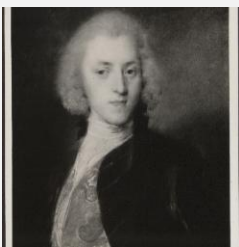
Related National Gallery of Art Library Image Collections Record

https://library.nga.gov/permalink/01NGA_INST/1p5jkvq/alma99158043804896

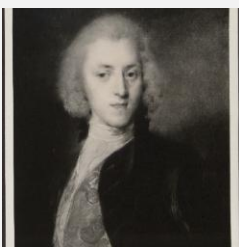
10 ARCHIVAL ITEMS



K0149 - Expert opinion by Berenson, circa 1920s-1950s

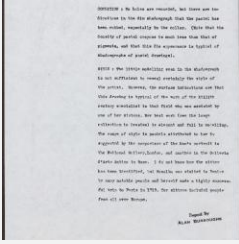


K0149 - Expert opinion by Marle, circa 1920s-1930s



K0149 - Expert opinion by Perkins et al., circa 1920s-1940s

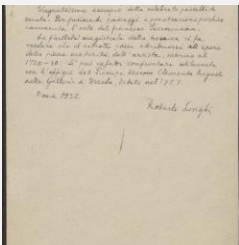
KRESS COLLECTION DIGITAL ARCHIVE



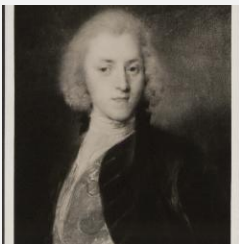
K0149 - Alan Burroughs report, circa 1930s-1940s



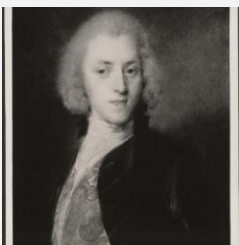
K0149 - Expert opinion by Fiocco, circa 1930s-1940s



K0149 - Expert opinion by Longhi, 1932



K0149 - Art object record, circa 1930s-1950s

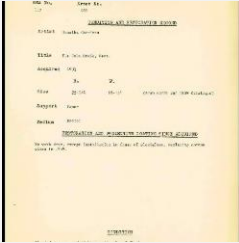


K0149 - Expert opinion by Suida, 1935

KRESS COLLECTION DIGITAL ARCHIVE



K0149 - Work summary log, 1941-1966



K0149 - Condition and restoration record, circa 1950s-1960s

RECORD LINK

<https://kress.nga.gov/Detail/objects/1993>