

Paolo Veneziano, active 1333-1358
The Crucifixion



KRESS CATALOGUE NUMBER

K285

IDENTIFIER

2114

ARTIST

Paolo Veneziano, active 1333-1358

NATIONALITY

Italian

DATE

c. 1340/1345

MEDIUM

tempera on panel

TYPE OF OBJECT

Painting

DIMENSIONS

painted surface: 31 x 38 cm (12 3/16 x 14 15/16 in)

LOCATION

National Gallery of Art, Washington, District of Columbia

PROVENANCE

(Italian art market, probably Venice), by 1902. [1] Achillito Chiesa, Milan, early twentieth century; [2] (Count Alessandro Contini-Bonacossi, Florence); sold July 1934 to the Samuel H. Kress Foundation, New York; [3] gift 1939 to NGA.

[1] In his article of 1912, Roger Fry reproduces the painting together with another, similarly attributed to the school of Semitecolo, explaining that it was present "some years ago in the market in Italy" (Roger Fry, "Exhibition of Pictures and the Early Venetian School at the Burlington Fine Arts Club," *The Burlington Magazine for Connoisseurs* 21 [1912]: 47, pl. 2). Fry had probably seen it in October 1902; in fact, in a letter dated 10 October 1902, written to his wife from Venice, he reports, "I've had great luck today, managed to get to see some pictures by Semitecolo what I've never managed before"; *Letters of Roger Fry*, ed. Denys Sutton, 2 vols., New York, 1972: 1:196.

[2] The collection of Achillito Chiesa, which the great art dealer Luigi Bellini calls the "più importante e intelligente collezione di oggetti d'arte italiana fondata in questi ultimi cinquant'anni in Italia" ("the most important, and intelligent, collection of Italian art objects formed in Italy within the last fifty years") (Luigi Bellini, *Nel mondo degli antiquari*, Florence, 1947: 223–224), was dispersed

KRESS COLLECTION DIGITAL ARCHIVE

between 1925 and 1931 because of the collector's financial difficulties; see Elisabeth E. Gardner, *A Bibliographical Repertory of Italian Private Collections*, 3 vols., ed. Chiara Ceschi and Katharine Baetjer, Vicenza, 1998: 1:227-228.
[3] The bill of sale is dated 13 July 1934 (copy in NGA curatorial files).

ACCESSION NUMBER

1939.1.143

KRESS NUMBER

285

PICHETTO NUMBER

8399

LEGACY NGA NUMBER

254

1 ACQUISITION

Contini Bonacossi, Alessandro, July 13, 1934 [1]

1 DISTRIBUTION

Gift to National Gallery of Art, June 29, 1939

EXTERNAL LINKS

Related Collection Record

<https://www.nga.gov/collection/art-object-page.284.html>

Related National Gallery of Art Library Image Collections Record

https://library.nga.gov/permalink/01NGA_INST/1p5jkvq/alma9910853804896

Related National Gallery of Art Systematic Catalog

<https://www.nga.gov/research/online-editions/italian-paintings-of-the-thirteenth-and-fourteenth-centuries.html>

16 ARCHIVAL ITEMS



K0285 - Expert opinion by Berenson, circa 1920s-1950s



K0285 - Expert opinion by Marle, circa 1920s-1930s

KRESS COLLECTION DIGITAL ARCHIVE



K0285 - Expert opinion by Perkins, circa 1920s-1940s



K0285 - Expert opinion by A. Venturi, circa 1920s-1930s



K0285 - Alan Burroughs report, circa 1930s-1940s



K0285 - Expert opinion by Fiocco, 1934



K0285 - Expert opinion by Longhi, 1934

KRESS COLLECTION DIGITAL ARCHIVE



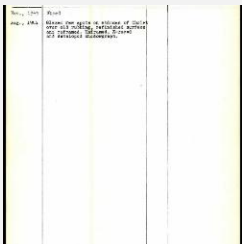
K0285 - Expert opinion by Suida, 1934



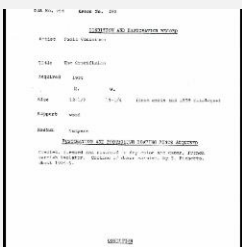
K0285 - Art object record, circa 1930s-1950s



K0285 - Alan Burroughs report, circa 1930s-1940s

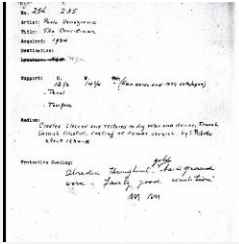


K0285 - Work summary log, 1943-1944

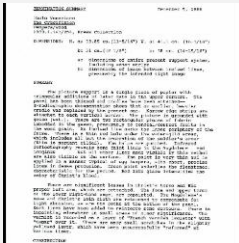


K0285 - Condition and restoration record, circa 1950s-1960s

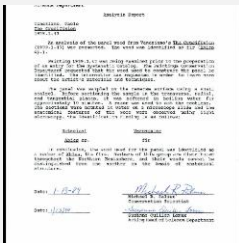
KRESS COLLECTION DIGITAL ARCHIVE



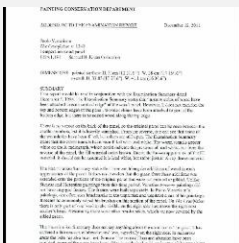
K0285 - Condition and restoration record, circa 1950s-1960s



K0285 - Examination summary, 1988



K0285 - Scientific analysis report, 1989



K0285 - Examination summary, 2011

RECORD LINK

<https://kress.nga.gov/Detail/objects/2114>