

Bernardo Daddi, active by 1320, died probably 1348
The Crucifixion



KRESS CATALOGUE NUMBER

K1369

IDENTIFIER

2120

ARTIST

Daddi, Bernardo, active by 1320, died probably 1348

NATIONALITY

Italian

DATE

c. 1320/1325

MEDIUM

tempera on poplar panel

TYPE OF OBJECT

Painting

DIMENSIONS

painted surface (including gilded frame): 34.9 x 22.7 cm (13 3/4 x 8 15/16 in)

LOCATION

National Gallery of Art, Washington, District of Columbia

PROVENANCE

(N. van Slochem, New York) by 1908; [1] sold 1910 to Dan Fellows Platt [1873-1938], Englewood, New Jersey; [2] sold November 1943 by Trustees of the Platt Estate to the Samuel H. Kress Foundation, New York; [3] gift 1961 to NGA.

[1] Dan Fellows Platt to Richard Offner; see Offner, *A Critical and Historical Corpus of Florentine Painting*, Sec. III, vol. VIII, New York, 1958: 142.

[2] Dan Fellows Platt Papers, Department of Rare Books and Special Collections, Princeton University, New Jersey: box 2, folder 23, call number C0860. The painting was lent by Platt to the Loan Exhibition of Italian Primitives at F Kleinberger Galleries, New York, in November 1917.

[3] Copies of the documents recording the sale are in NGA curatorial files; the painting was one of six purchased from the Platt

KRESS COLLECTION DIGITAL ARCHIVE

estate and is listed as "Attributed to Bernardo Daddi."

ACCESSION NUMBER

1961.9.2

KRESS NUMBER

1369

PICHETTO NUMBER

11375

LEGACY NGA NUMBER

795

1 ACQUISITION

Platt, Dan Fellows (estate of), December 1, 1943

2 DISTRIBUTIONS

Loan to National Gallery of Art, January 23, 1946

Gift to National Gallery of Art, December 09, 1961

EXTERNAL LINKS

Related Collection Record

<https://www.nga.gov/collection/art-object-page.46101.html>

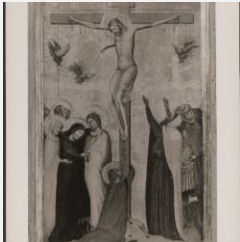
Related National Gallery of Art Library Image Collections Record

https://library.nga.gov/permalink/01NGA_INST/1p5jkhvq/alma991100143804896

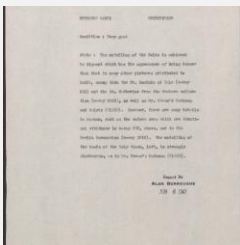
Related National Gallery of Art Systematic Catalog

<https://www.nga.gov/research/online-editions/italian-paintings-of-the-thirteenth-and-fourteenth-centuries.html>

5 ARCHIVAL ITEMS



K1369 - Art object record, circa 1930s-1950s

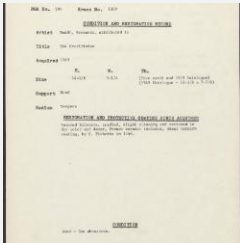


K1369 - Alan Burroughs report, 1947

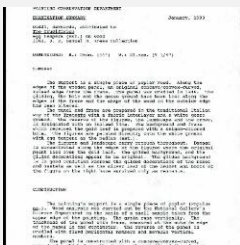
KRESS COLLECTION DIGITAL ARCHIVE



K1369 - Work summary log, 1946



K1369 - Condition and restoration record, circa 1950s-1960s



K1369 - Examination summary, 1990

RECORD LINK

<https://kress.nga.gov/Detail/objects/2120>