

Pietro Longhi, 1702-1785
The Faint



KRESS CATALOGUE NUMBER

K146

IDENTIFIER

2167

ARTIST

Longhi, Pietro, 1702-1785

NATIONALITY

Italian

DATE

c. 1744

MEDIUM

oil on canvas

TYPE OF OBJECT

Painting

DIMENSIONS

50 x 61.7 cm (19 11/16 x 24 5/16 in)

LOCATION

National Gallery of Art, Washington, District of Columbia

PROVENANCE

Prince Alberto Giovanelli [1876-1937], Venice, until c. 1930. [1] (Count Alessandro Contini-Bonacossi, Rome); purchased 1931 by the Samuel H. Kress Foundation, New York; [2] gift 1939 to NGA.

[1] According to typed note from the Kress Records, NGA curatorial files.

[2] According to typed note from the Kress Records, NGA curatorial files, and Fern Rusk Shapley, *Catalogue of Italian Paintings*, 2 vols., Washington, D.C., 1979: 1:268.

ACCESSION NUMBER

1939.1.63

KRESS COLLECTION DIGITAL ARCHIVE

KRESS NUMBER

146

PICHETTO NUMBER

7484

LEGACY NGA NUMBER

174

1 ACQUISITION

Contini Bonacossi, Alessandro, July 15, 1931

1 DISTRIBUTION

Gift to National Gallery of Art, June 29, 1939

EXTERNAL LINKS**Related Collection Record**

<https://www.nga.gov/collection/art-object-page.204.html>

Related National Gallery of Art Library Image Collections Record

https://library.nga.gov/permalink/01NGA_INST/1p5jkvq/alma9933413804896

Related National Gallery of Art Systematic Catalog

<https://www.nga.gov/content/dam/ngaweb/research/publications/pdfs/italian-paintings-17th-and-18th-centuries.pdf>

10 ARCHIVAL ITEMS

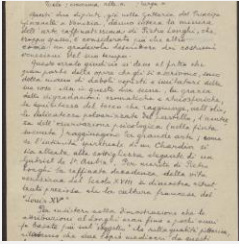
K0146 - Expert opinion by Suida, circa 1920s-1950s



K0146 - Expert opinion by Berenson, circa 1920s-1950s



K0146 - Expert opinion by Perkins, circa 1920s-1940s



K0146 - Expert opinion by Longhi, 1932



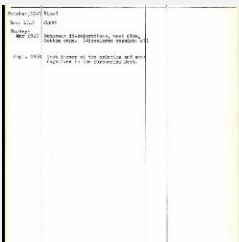
K0146 - Art object record, circa 1930s-1950s



K0146 - Expert opinion by Fiocco, 1936

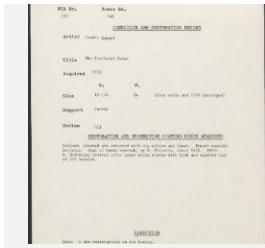


K0146 - Expert opinion by A. Venturi, 1936

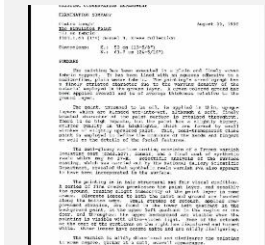


K0146 - Work summary log, 1943-1969

KRESS COLLECTION DIGITAL ARCHIVE



K0146 - Condition and restoration record, circa 1950s-1960s



K0146 - Examination summary, 1990

RECORD LINK

<https://kress.nga.gov/Detail/objects/2167>