

Unknown, Italian
Madonna and Christ Child Enthroned with Angels



KRESS CATALOGUE NUMBER

K1

IDENTIFIER

2509

ARTIST

Italian 15th Century
Anonymous Artist

NATIONALITY

Italian

DATE

about 1400 / 1450

MEDIUM

tempera on panel

TYPE OF OBJECT

Painting

DIMENSIONS

164.1 x 75.5 cm (64-5/8 x 29-3/4 in)

LOCATION

Birmingham Museum of Art, Birmingham, Alabama

PROVENANCE

Convento di Santa Marta, near Orvieto. [1] (Count Alessandro Contini Bonacossi [1878-1955], Rome-Florence); sold to Samuel H. Kress [1863-1955] on 1 March 1927 as Italian School; gift to the National Gallery of Art in 1939; deaccessioned 1952 and returned to The Samuel H. Kress Foundation; gift to Birmingham Museum of Art in 1961, no. 61.90. [1] According to the catalogue published by the Birmingham Museum of Art, The Samuel H. Kress Collection, 1959, p. 42.

KRESS COLLECTION DIGITAL ARCHIVE

ACCESSION NUMBER

1961.9

KRESS NUMBER

1

LEGACY NGA NUMBER

114

1 ACQUISITION

Contini Bonacossi, Alessandro, March 1, 1927

3 DISTRIBUTIONS

Gift to National Gallery of Art, June 29, 1939

Deaccession by National Gallery of Art, October 15, 1952

Gift to Birmingham Museum of Art, December 09, 1961

EXTERNAL LINKS**Related Collection Record**

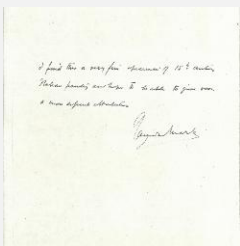
<https://artsbma.org/collection/madonna-and-christ-child-enthroned-with-angels/>

Related National Gallery of Art Library Image Collections Record

https://library.nga.gov/permalink/01NGA_INST/1p5jvkq/alma991101713804896

9 ARCHIVAL ITEMS

K0001 - Expert opinion by Berenson, circa 1920s-1950s

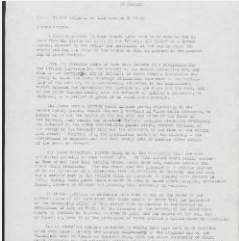


K0001 - Expert opinion by Marle, circa 1920s-1930s

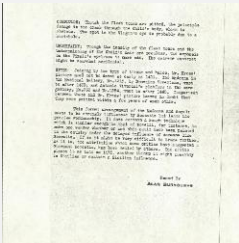
KRESS COLLECTION DIGITAL ARCHIVE



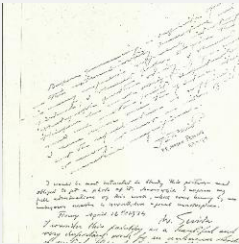
K0001 - Expert opinion by A. Venturi, circa 1920s-1930s



K0001 - Expert opinion by Longhi, 1926



K0001 - Alan Burroughs report, circa 1930s-1940s

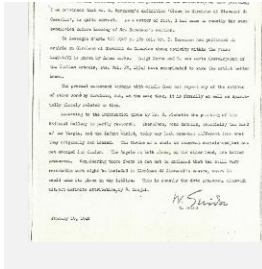


K0001 - Expert opinion by Fiocco et al., 1934

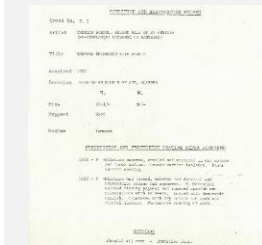


K0001 - Photograph, circa 1930s-1960s

KRESS COLLECTION DIGITAL ARCHIVE



K0001 - Expert opinion by Suida, 1948



K0001 - Condition and restoration record, circa 1950s-1960s

RECORD LINK

<https://kress.nga.gov/Detail/objects/2509>