

Neri di Bicci, 1418-1492
The Martyrdom of Saint Apollonia



KRESS CATALOGUE NUMBER

K1003

IDENTIFIER

2513

ARTIST

Neri di Bicci, 1418-1492

NATIONALITY

Italian

DATE

c. 1458-59

MEDIUM

tempera on panel

TYPE OF OBJECT

Painting

DIMENSIONS

21.3 x 52 cm (8-3/8 x 20-1/2 in)

LOCATION

The Benton Museum of Art at Pomona College, Claremont, California

PROVENANCE

(Count Alessandro Contini-Bonacossi [1878-1955], Florence and Rome); sold to Samuel H. Kress [1863-1955] on 1 June 1936; gift to the National Gallery of Art in 1939; deaccessioned in 1952 and returned to the Samuel H. Kress Foundation; gift to Pomona College Museum of Art in 1961, no. P61.1.6.

ACCESSION NUMBER

P61.1.7

KRESS NUMBER

1003

PICHETTO NUMBER

8969

LEGACY NGA NUMBER

431

1 ACQUISITION

Contini Bonacossi, Alessandro, June 1, 1936 [2]

KRESS COLLECTION DIGITAL ARCHIVE

3 DISTRIBUTIONS

Gift to National Gallery of Art, June 29, 1939

Deaccession by National Gallery of Art, October 15, 1952

Gift to Pomona College, December 09, 1961

EXTERNAL LINKS

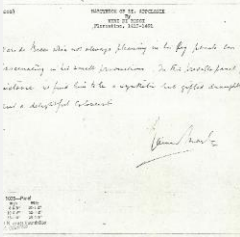
Related National Gallery of Art Library Image Collections Record

https://library.nga.gov/permalink/01NGA_INST/1p5jvkq/alma99389113804896

13 ARCHIVAL ITEMS



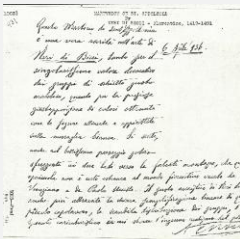
K1003 - Expert opinion by Berenson, circa 1920s-1950s



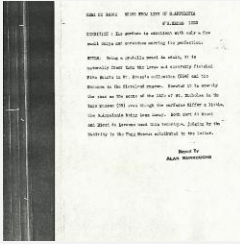
K1003 - Expert opinion by Marle, circa 1920s-1930s



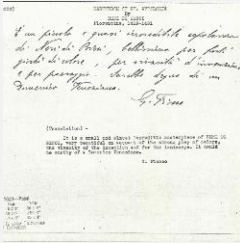
K1003 - Expert opinion by Perkins, circa 1920s-1940s



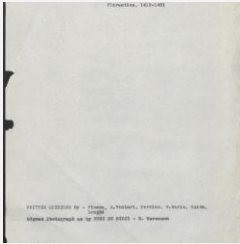
K1003 - Expert opinion by A. Venturi, circa 1920s-1930s



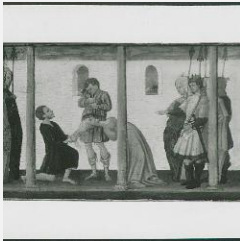
K1003 - Alan Burroughs report, circa 1930s-1940s



K1003 - Expert opinion by Fiocco, circa 1930s-1940s



K1003 - Art object record, circa 1930s-1950s

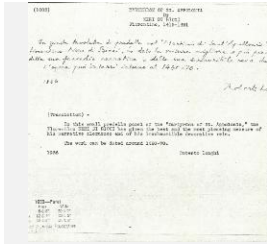


K1003 - Photograph, circa 1930s-1960s

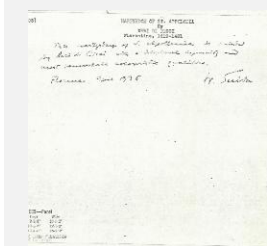


K1003 - Photograph, circa 1930s-1960s

KRESS COLLECTION DIGITAL ARCHIVE



K1003 - Expert opinion by Longhi, 1936



K1003 - Expert opinion by Suida, 1936



K1003 - National Gallery of Art mounted photograph, circa 1940s-1950s



K1003 - Condition and restoration record, circa 1950s-1960s

RECORD LINK

<https://kress.nga.gov/Detail/objects/2513>