

Vincenzo Catena, c. 1470-1531
Christ and the Samaritan Woman



KRESS CATALOGUE NUMBER

K1006

IDENTIFIER

2516

ARTIST

Catena, Vincenzo, c. 1470-1531

NATIONALITY

Italian

DATE

c. 1520

MEDIUM

oil on canvas

TYPE OF OBJECT

Painting

DIMENSIONS

99 x 129.5 cm (39 x 51 in)

LOCATION

Columbia Museum of Art, Columbia, South Carolina

PROVENANCE

(Count Alessandro Contini Bonacossi [1878-1955] Rome-Florence); sold to Samuel H. Kress [1863-1955] on 1 June 1936; gift to the National Gallery of Art in 1939; deaccessioned 1952 and returned to the Samuel H. Kress Foundation; gift to Columbia Museum of Art in 1961, no. CMA 1962.14.

ACCESSION NUMBER

CMA 1962.14

KRESS NUMBER

1006

KRESS COLLECTION DIGITAL ARCHIVE

PICHETTO NUMBER

9272?

LEGACY NGA NUMBER

433

1 ACQUISITION

Contini Bonacossi, Alessandro, June 1, 1936 [2]

3 DISTRIBUTIONS

Gift to National Gallery of Art, June 29, 1939

Deaccession by National Gallery of Art, February 21, 1952

Gift to Columbia Museum of Art, December 09, 1961

EXTERNAL LINKS

Related National Gallery of Art Library Image Collections Record

https://library.nga.gov/permalink/01NGA_INST/1p5jkvq/alma99389143804896

13 ARCHIVAL ITEMS



K1006 - Expert opinion by Berenson, circa 1920s-1950s

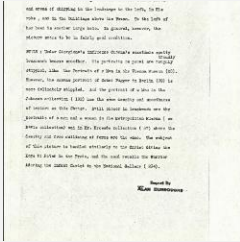


K1006 - Expert opinion by Marle, circa 1920s-1930s



K1006 - Expert opinion by Perkins, circa 1920s-1940s

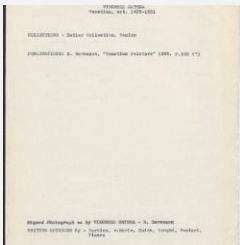
KRESS COLLECTION DIGITAL ARCHIVE



K1006 - Alan Burroughs report, circa 1930s-1940s



K1006 - Expert opinion by Fiocco, circa 1930s-1940s



K1006 - Art object record, circa 1930s-1950s

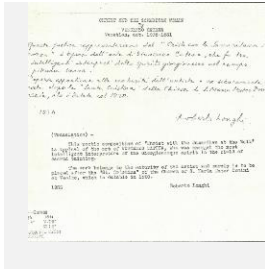


K1006 - Photograph, circa 1930s-1960s

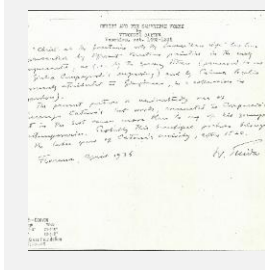


K1006 - Photograph, circa 1930s-1960s

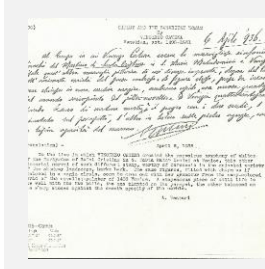
KRESS COLLECTION DIGITAL ARCHIVE



K1006 - Expert opinion by Longhi, 1936



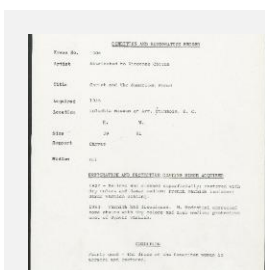
K1006 - Expert opinion by Suida, 1936



K1006 - Expert opinion by A. Venturi, 1936



K1006 - National Gallery of Art mounted photograph, circa 1940s-1950s



K1006 - Condition and restoration record, circa 1950s-1960s

RECORD LINK

<https://kress.nga.gov/Detail/objects/2516>