

Florentine School, close to Botticini
The Crucifixion with St. Jerome, Donor, and His Family



KRESS CATALOGUE NUMBER

K1031

IDENTIFIER

2539

ARTIST

Florentine 15th Century
Botticini, Francesco, 1446-1497

NATIONALITY

Italian

DATE

1461-1512

MEDIUM

tempera on panel

TYPE OF OBJECT

Painting

DIMENSIONS

71.8 x 53 cm (28-1/4 x 20-7/8 in)

LOCATION

Doris Ulmann Galleries, Berea College, Berea, KY

HISTORICAL ATTRIBUTION

Antoniazio Romano, active c. 1461-1508/1509

KRESS COLLECTION DIGITAL ARCHIVE

PROVENANCE

(Count Alessandro Contini Bonacossi [1878-1955] Rome-Florence); sold to Samuel H. Kress [1863-1955] on 1 June 1936 as Antoniazzo Romano; gift 1961 to Doris Ulmann Galleries, Berea College, no. 140.13.

ACCESSION NUMBER

140.14

KRESS NUMBER

1031

PICHETTO NUMBER

8999

LEGACY NGA NUMBER

869

1 ACQUISITION

Contini Bonacossi, Alessandro, June 1, 1936 [2]

2 DISTRIBUTIONS

Loan to National Gallery of Art, January 23, 1946

Gift to Doris Ulmann Galleries, Berea College, December 09, 1961

EXTERNAL LINKS

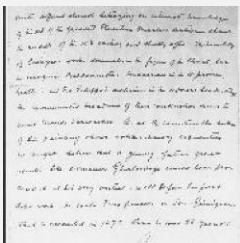
Related National Gallery of Art Library Image Collections Record

https://library.nga.gov/permalink/01NGA_INST/1p5jktivq/alma99393703804896

12 ARCHIVAL ITEMS

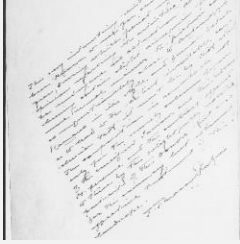


K1031 - Expert opinion by Berenson, circa 1920s-1950s

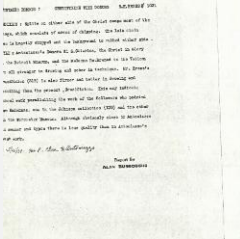


K1031 - Expert opinion by Marle, circa 1920s-1930s

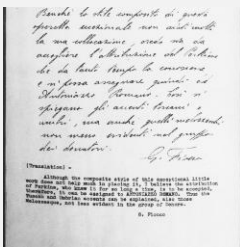
KRESS COLLECTION DIGITAL ARCHIVE



K1031 - Expert opinion by Perkins, circa 1920s-1940s



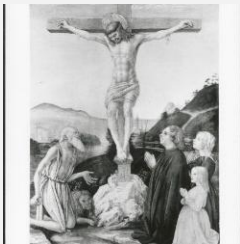
K1031 - Alan Burroughs report, circa 1930s-1940s



K1031 - Expert opinion by Fiocco, circa 1930s-1940s

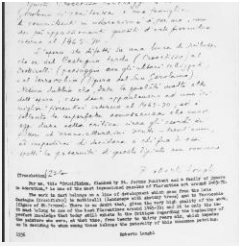


K1031 - Art object record, circa 1930s-1950s

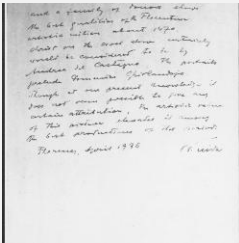


K1031 - Photograph, circa 1930s-1960s

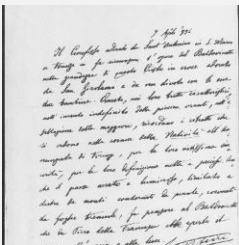
KRESS COLLECTION DIGITAL ARCHIVE



K1031 - Expert opinion by Longhi, 1936



K1031 - Expert opinion by Suida, 1936



K1031 - Expert opinion by A. Venturi, 1936



K1031 - National Gallery of Art mounted photograph, circa 1940s-1950s



K1031 - Condition and restoration record, circa 1950s-1960s

RECORD LINK

<https://kress.nga.gov/Detail/objects/2539>