

Bernardino Licinio, active c. 1511-1549
Portrait of a Young Man



KRESS CATALOGUE NUMBER

K1051

IDENTIFIER

2556

ARTIST

Licinio, Bernardino, active c. 1511-1549

NATIONALITY

Italian

DATE

c. 1524

MEDIUM

panel

TYPE OF OBJECT

Painting

DIMENSIONS

30.5 x 24.5 cm (12 x 9-5/8 in)

LOCATION

Howard University Gallery of Art, Washington, District of Columbia

PROVENANCE

Andrea Vendramin, Venice, c. 1627. [1] (Count Alessandro Contini Bonacossi [1878-1955] Rome-Florence); sold to Samuel H. Kress [1863-1955], on 18 October 1936; gift to Howard University Gallery of Art in 1961, Washington, DC, no. 61.151.P [1] No. 56B of the 1627 illustrated inventory of the collection reproduced and described by Tancred Borenius, *The Picture Gallery of Andrea Vendramin*, London, 1923.

ACCESSION NUMBER

KRESS COLLECTION DIGITAL ARCHIVE

61.151.P

KRESS NUMBER

1051

PICHETTO NUMBER

9117

LEGACY NGA NUMBER

855

1 ACQUISITION

Contini Bonacossi, Alessandro, October 18, 1936 [2]

2 DISTRIBUTIONS

Loan to National Gallery of Art, January 23, 1946

Gift to Howard University Gallery of Art, December 09, 1961

EXTERNAL LINKS

Related National Gallery of Art Library Image Collections Record

https://library.nga.gov/permalink/01NGA_INST/1p5jkvq/alma99390033804896

13 ARCHIVAL ITEMS



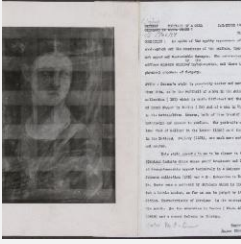
K1051 - Expert opinion by Berenson, circa 1920s-1950s



K1051 - Expert opinion by Longhi, circa 1920s-1950s



K1051 - Expert opinion by Perkins, circa 1920s-1940s



K1051 - Alan Burroughs report, circa 1930s-1940s



K1051 - Art object record, circa 1930s-1950s



K1051 - Photograph, circa 1930s-1960s

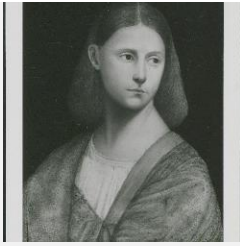


K1051 - Photograph, circa 1930s-1960s



K1051 - Photograph, circa 1930s-1960s

KRESS COLLECTION DIGITAL ARCHIVE



K1051 - Expert opinion by Fiocco, 1936



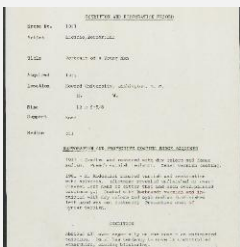
K1051 - Expert opinion by Suida, 1936



K1051 - Expert opinion by A. Venturi, 1936



K1051 - National Gallery of Art mounted photograph, circa 1940s-1950s



K1051 - Condition and restoration record, circa 1950s-1960s

RECORD LINK

<https://kress.nga.gov/Detail/objects/2556>