

Studio of Giovanni di Paolo
Madonna and Child with Two Angels before a Rose Hedge



KRESS CATALOGUE NUMBER

K1053

IDENTIFIER

2558

ARTIST

Giovanni di Paolo, c. 1403-1482
Anonymous Artist

NATIONALITY

Italian

DATE

c. 1470-75

MEDIUM

tempera and gold on panel

TYPE OF OBJECT

Painting

DIMENSIONS

38.9 x 28.8 cm (15-5/16 x 11-5/16 in)

LOCATION

Chazen Museum of Art, University of Wisconsin-Madison, Madison, Wisconsin

HISTORICAL ATTRIBUTION

Giacomo del Pisano, active second half 15th century

PROVENANCE

(Amaro, Rome). (Count Alessandro Contini Bonacossi [1878-1955] Rome-Florence); sold to Samuel H. Kress [1863-1955] on 18 October 1936 as Giacomo Pisano; gift to Chazen Museum of Art [formerly Elvehjem Art Center], University of Wisconsin in 1961,

KRESS COLLECTION DIGITAL ARCHIVE

no.61.4.8.

ACCESSION NUMBER

61.4.8

KRESS NUMBER

1053

LEGACY NGA NUMBER

848

1 ACQUISITION

Contini Bonacossi, Alessandro, October 18, 1936 [2]

2 DISTRIBUTIONS

Loan to National Gallery of Art, January 23, 1946

Gift to Chazen Museum of Art, University of Wisconsin-Madison, December 09, 1961

EXTERNAL LINKS

Related National Gallery of Art Library Image Collections Record

https://library.nga.gov/permalink/01NGA_INST/1p5jkvq/alma99394013804896

12 ARCHIVAL ITEMS



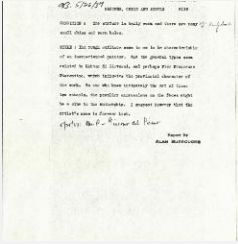
K1053 - Expert opinion by Berenson, circa 1920s-1950s



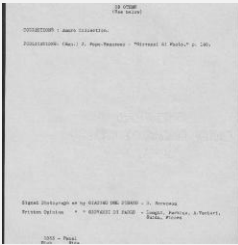
K1053 - Expert opinion by Longhi, circa 1920s-1950s



K1053 - Expert opinion by Perkins, circa 1920s-1940s



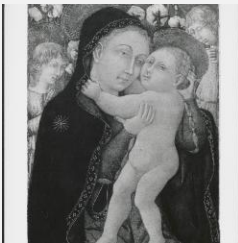
K1053 - Alan Burroughs report, circa 1930s-1940s



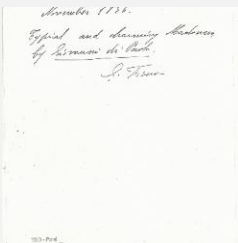
K1053 - Art object record, circa 1930s-1950s



K1053 - Photograph, circa 1930s-1960s



K1053 - Photograph, circa 1930s-1960s



K1053 - Expert opinion by Fiocco, 1936

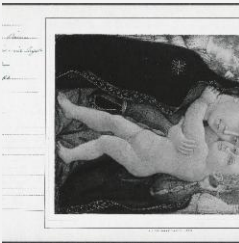
KRESS COLLECTION DIGITAL ARCHIVE



K1053 - Expert opinion by Suida, 1936



K1053 - Expert opinion by A. Venturi, 1936



K1053 - National Gallery of Art mounted photograph, circa 1940s-1950s



K1053 - Condition and restoration record, circa 1950s-1960s

RECORD LINK

<https://kress.nga.gov/Detail/objects/2558>