

Attributed to Dosso Dossi
Portrait of a Man



KRESS CATALOGUE NUMBER

K1070

IDENTIFIER

2576

ARTIST

Dossi, Dosso, active 1512-1542

NATIONALITY

Italian

DATE

c. 1520-25

MEDIUM

oil on canvas

TYPE OF OBJECT

Painting

DIMENSIONS

57.2 x 42 cm (22-1/2 x 16-1/2 in)

LOCATION

Samuel H. Kress Foundation, New York, New York

HISTORICAL ATTRIBUTION

Bembo, Gian Francesco, c. 1480-1543

PROVENANCE

(Count Alessandro Contini Bonacossi [1878-1955] Rome-Florence); sold to Samuel H. Kress [1863-1955] on 16 September 1938 as Giulio Campi; gift 1937 to the Wichita Art Association, no. B-22-1.

ACCESSION NUMBER

KRESS COLLECTION DIGITAL ARCHIVE

B-22-1

KRESS NUMBER

1070

LEGACY KRESS NUMBER

125

PICHETTO NUMBER

7212

4 ACQUISITIONS

Contini Bonacossi, Alessandro, September 30, 1930

Contini Bonacossi, Alessandro, June 13, 1932

Contini Bonacossi, Alessandro, June 27, 1934

Contini Bonacossi, Alessandro, August 1, 1934

1 DISTRIBUTION

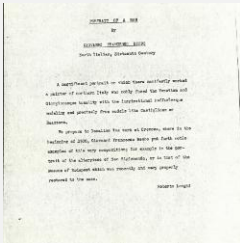
Gift to Wichita Art Association (Mark Arts), December 20, 1937

EXTERNAL LINKS

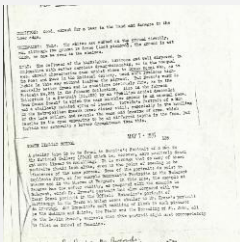
Related National Gallery of Art Library Image Collections Record

https://library.nga.gov/permalink/01NGA_INST/1p5jvkq/alma991596643804896

6 ARCHIVAL ITEMS

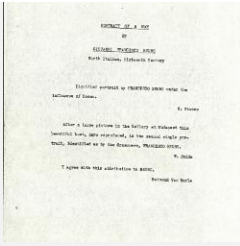


K1070 - Expert opinion by Longhi, circa 1920s-1950s



K1070 - Alan Burroughs report, circa 1930s-1940s

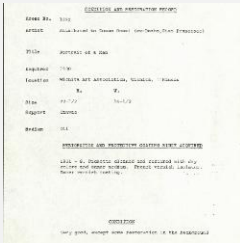
KRESS COLLECTION DIGITAL ARCHIVE



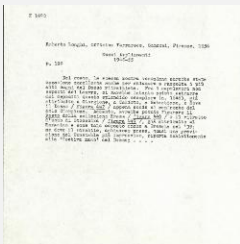
K1070 - Expert opinion by Fiocco et al., circa 1930s-1940s



K1070 - Photograph, circa 1930s-1960s



K1070 - Condition and restoration record, circa 1950s-1960s



K1070 - Expert opinion by Longhi, 1955

RECORD LINK

<https://kress.nga.gov/Detail/objects/2576>