

**Workshop of Bernardo Daddi**  
*The Enthroned Madonna*



**KRESS CATALOGUE NUMBER**

K1089

**IDENTIFIER**

2592

**ARTIST**

Daddi, Bernardo, active by 1320, died probably 1348  
Anonymous Artist

**NATIONALITY**

Italian

**DATE**

c. 1335-40

**MEDIUM**

tempera on lindenwood panel

**TYPE OF OBJECT**

Painting

**DIMENSIONS**

40.3 x 22.5 cm (15-7/8 x 8-7/8 in)

**LOCATION**

Columbia Museum of Art, Columbia, South Carolina

**PROVENANCE**

Baron Sergardi-Biringucci, Siena. (Newhouse Galleries, New York); sold to Samuel H. Kress [1863-1955] on 19 March 1937; gift to the National Gallery of Art in 1939; deaccessioned in 1952 and returned to the Samuel H. Kress Foundation; gift to Columbia Museum of Art in 1961, no. CMA 1954.21.

**ACCESSION NUMBER**

# KRESS COLLECTION DIGITAL ARCHIVE

CMA 1954.21

## KRESS NUMBER

1089

## PICHETTO NUMBER

9305

## LEGACY NGA NUMBER

457

---

### 1 ACQUISITION

Newhouse Galleries, March 19, 1937

---

### 3 DISTRIBUTIONS

Gift to National Gallery of Art, June 29, 1939

Deaccession by National Gallery of Art, October 15, 1952

Gift to Columbia Museum of Art, December 09, 1961

---

### EXTERNAL LINKS

#### Related National Gallery of Art Library Image Collections Record

[https://library.nga.gov/permalink/01NGA\\_INST/1p5jvkq/alma991596923804896](https://library.nga.gov/permalink/01NGA_INST/1p5jvkq/alma991596923804896)

---

### 15 ARCHIVAL ITEMS



K1089 - Expert opinion by Berenson, circa 1920s-1950s



K1089 - Expert opinion by Longhi, circa 1920s-1950s

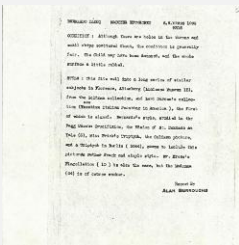
# KRESS COLLECTION DIGITAL ARCHIVE



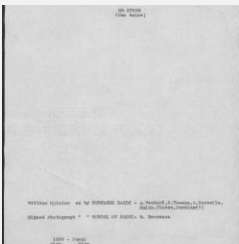
K1089 - Expert opinion by Perkins, circa 1920s-1940s



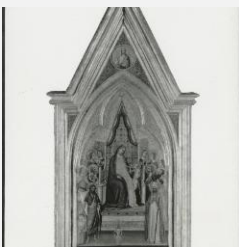
K1089 - Expert opinion by A. Venturi, circa 1920s-1930s



K1089 - Alan Burroughs report, circa 1930s-1940s

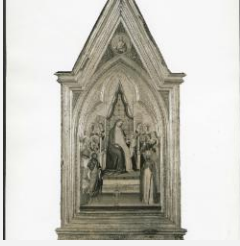


K1089 - Art object record, circa 1930s-1950s

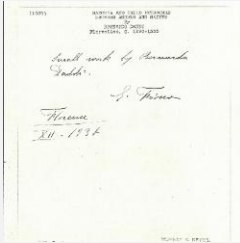


K1089 - Photograph, circa 1930s-1960s

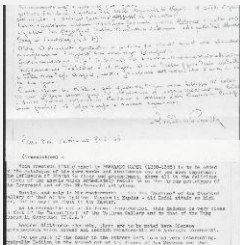
# KRESS COLLECTION DIGITAL ARCHIVE



K1089 - Photograph, circa 1930s-1960s



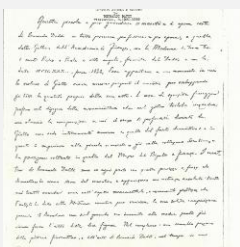
K1089 - Expert opinion by Fiocco, 1938



K1089 - Expert opinion by Porcella, 1936

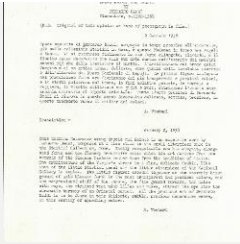


K1089 - Expert opinion by Suida, 1938

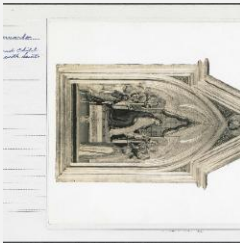


K1089 - Expert opinion by Toesca, 1937

# KRESS COLLECTION DIGITAL ARCHIVE



K1089 - Expert opinion by A. Venturi, 1936



K1089 - National Gallery of Art mounted photograph, circa 1940s-1950s



K1089 - Condition and restoration record, circa 1950s-1960s

## RECORD LINK

<https://kress.nga.gov/Detail/objects/2592>