

Attributed to Ridolfo Ghirlandaio
Portrait of a Young Lady



KRESS CATALOGUE NUMBER

K1098

IDENTIFIER

2599

ARTIST

Ghirlandaio, Ridolfo, 1483-1561
Anonymous Artist

NATIONALITY

Italian

DATE

c. 1560

MEDIUM

oil on panel

TYPE OF OBJECT

Painting

DIMENSIONS

124.2 x 101.3 cm (48-7/8 x 39-7/8 in)

LOCATION

Haggin Museum, Stockton, California

PROVENANCE

Private Collection, Florence. (Count Alessandro Contini Bonacossi [1878-1955] Rome-Florence); sold to Samuel H. Kress [1863-1955] on 16 June 1937; gift 1938 to the Haggin Museum of Art, Stockton, California, no. P391.

KRESS COLLECTION DIGITAL ARCHIVE

ACCESSION NUMBER

72x.425

KRESS NUMBER

1098

1 ACQUISITION

Contini Bonacossi, Alessandro, June 16, 1937

1 DISTRIBUTION

Gift to Haggin Museum, December 30, 1938

EXTERNAL LINKS

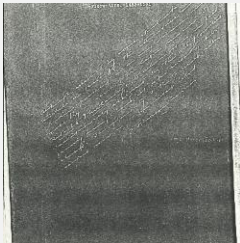
Related National Gallery of Art Library Image Collections Record

https://library.nga.gov/permalink/01NGA_INST/1p5jkvq/alma99394323804896

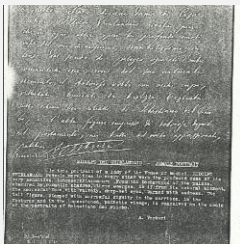
9 ARCHIVAL ITEMS



K1098 - Expert opinion by Berenson, circa 1920s-1950s

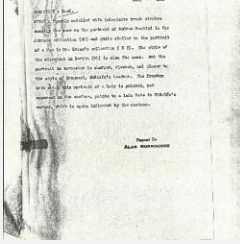


K1098 - Expert opinion by Perkins, circa 1920s-1940s



K1098 - Expert opinion by A. Venturi, circa 1920s-1930s

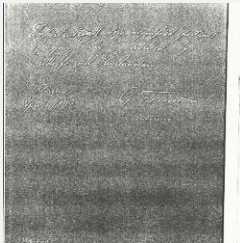
KRESS COLLECTION DIGITAL ARCHIVE



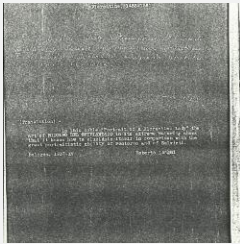
K1098 - Alan Burroughs report, circa 1930s-1940s



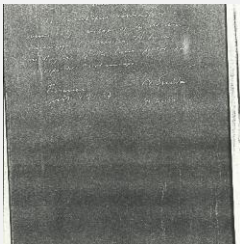
K1098 - Photograph, circa 1930s-1960s



K1098 - Expert opinion by Fiocco, 1937

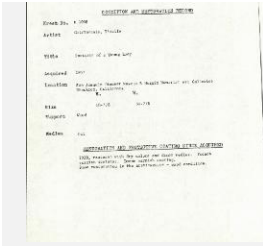


K1098 - Expert opinion by Longhi, 1937



K1098 - Expert opinion by Suida, 1937

KRESS COLLECTION DIGITAL ARCHIVE



K1098 - Condition and restoration record, circa 1950s-1960s

RECORD LINK

<https://kress.nga.gov/Detail/objects/2599>