

Giovanni Antonio Pordenone, probably 1484-1539
Saint Christopher



KRESS CATALOGUE NUMBER

K1106

IDENTIFIER

2609

ARTIST

Pordenone, Giovanni Antonio, probably 1484-1539

NATIONALITY

Italian

DATE

1500-25

MEDIUM

oil on canvas

TYPE OF OBJECT

Painting

DIMENSIONS

175 x 72.4 cm (68-7/8 x 28-1/2 in)

LOCATION

Eskenazi Museum of Art, Indiana University, Bloomington, Indiana

PROVENANCE

Franck Collection, Rome. Moroli Collection, Rome. (Count Alessandro Contini Bonacossi [1878-1955], Rome-Florence); sold to Samuel H. Kress [1863-1955] on 16 June 1937; gift to the National Gallery of Art in 1939; deaccessioned in 1952 and returned to the Samuel H. Kress Foundation; gift 1961 to Indiana University Art Museum, Bloomington, no. 62.152.

KRESS COLLECTION DIGITAL ARCHIVE

ACCESSION NUMBER

62.152

KRESS NUMBER

1106

LEGACY NGA NUMBER

471

1 ACQUISITION

Contini Bonacossi, Alessandro, June 16, 1937

3 DISTRIBUTIONS

Gift to National Gallery of Art, June 29, 1939

Deaccession by National Gallery of Art, October 15, 1952

Gift to Indiana University Art Museum, May 02, 1962

EXTERNAL LINKS

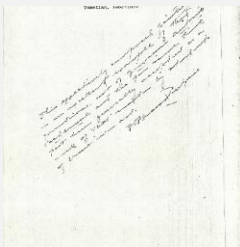
Related National Gallery of Art Library Image Collections Record

https://library.nga.gov/permalink/01NGA_INST/1p5jkvq/alma99394733804896

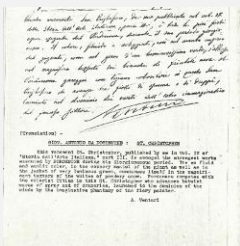
11 ARCHIVAL ITEMS



K1106 - Expert opinion by Berenson, circa 1920s-1950s

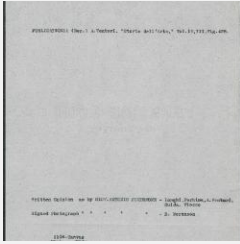


K1106 - Expert opinion by Perkins, circa 1920s-1940s



K1106 - Expert opinion by A. Venturi, circa 1920s-1930s

KRESS COLLECTION DIGITAL ARCHIVE



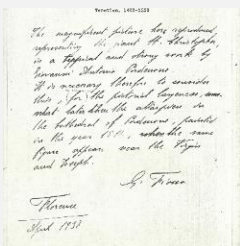
K1106 - Art object record, circa 1930s-1950s



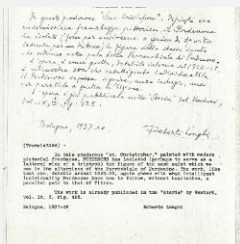
K1106 - Photograph, circa 1930s-1960s



K1106 - Photograph, circa 1930s-1960s

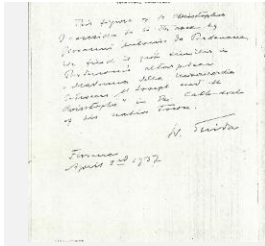


K1106 - Expert opinion by Fiocco, 1937

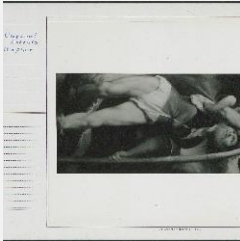


K1106 - Expert opinion by Longhi, 1937

KRESS COLLECTION DIGITAL ARCHIVE



K1106 - Expert opinion by Suida, 1937



K1106 - National Gallery of Art mounted photograph, circa 1940s-1950s



K1106 - Condition and restoration record, circa 1950s-1960s

RECORD LINK

<https://kress.nga.gov/Detail/objects/2609>