

Workshop of Ambrogio Bergognone
Burial of Saint Catherine



KRESS CATALOGUE NUMBER

K1107B

IDENTIFIER

2611

ARTIST

Bergognone, Ambrogio, c. 1460-1523
Anonymous Artist

NATIONALITY

Italian

DATE

15th century

MEDIUM

tempera on panel

TYPE OF OBJECT

Painting

DIMENSIONS

19.4 x 29.5 cm (7-5/8 x 11-5/8 in)

LOCATION

Eskenazi Museum of Art, Indiana University, Bloomington, Indiana

ACCESSION NUMBER

62.154

KRESS NUMBER

1107B

PICHETTO NUMBER

9368b

1 ACQUISITION

Contini Bonacossi, Alessandro, June 16, 1937

1 DISTRIBUTION

KRESS COLLECTION DIGITAL ARCHIVE

Gift to Indiana University Art Museum, May 02, 1962

EXTERNAL LINKS

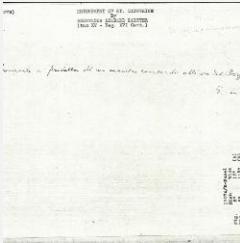
Related National Gallery of Art Library Image Collections Record

https://library.nga.gov/permalink/01NGA_INST/1p5jkvq/alma991100193804896

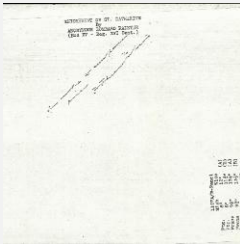
33 ARCHIVAL ITEMS



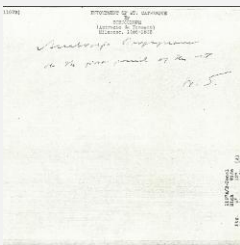
K1107B - Expert opinion by Berenson, circa 1920s-1950s



K1107B - Expert opinion by Longhi, circa 1920s-1950s

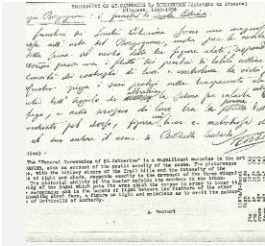


K1107B - Expert opinion by Perkins, circa 1920s-1940s



K1107B - Expert opinion by Suida, circa 1920s-1950s

KRESS COLLECTION DIGITAL ARCHIVE



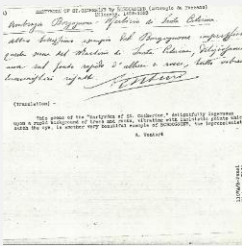
K1107B - Expert opinion by A. Venturi, circa 1920s-1930s



K1107A - Expert opinion by Berenson, circa 1920s-1950s



K1107A - Expert opinion by Perkins, circa 1920s-1940s



K1107A - Expert opinion by A. Venturi, circa 1920s-1930s

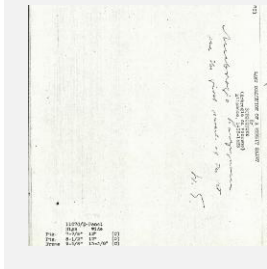


K1107C - Expert opinion by Berenson, circa 1920s-1950s

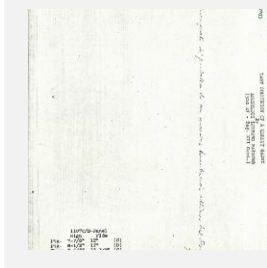
KRESS COLLECTION DIGITAL ARCHIVE



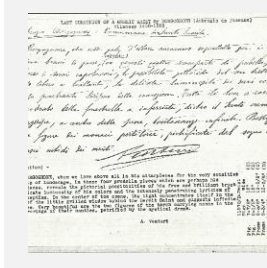
K1107C - Expert opinion by Perkins, circa 1920s-1940s



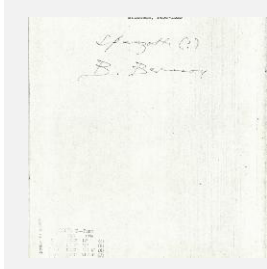
K1107C - Expert opinion by Suida, circa 1920s-1950s



K1107C - Expert opinion by Longhi, circa 1920s-1950s

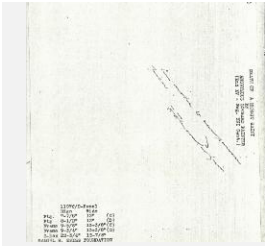


K1107C - Expert opinion by A. Venturi, circa 1920s-1930s



K1107D - Expert opinion by Berenson, circa 1920s-1950s

KRESS COLLECTION DIGITAL ARCHIVE



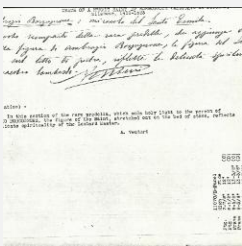
K1107D - Expert opinion by Perkins, circa 1920s-1940s



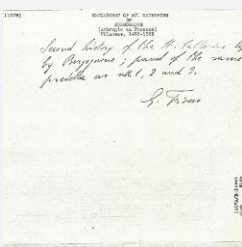
K1107D - Expert opinion by Suida, circa 1920s-1950s



K1107D - Expert opinion by Longhi, circa 1920s-1950s



K1107D - Expert opinion by A. Venturi, circa 1920s-1930s

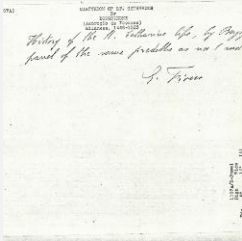


K1107B - Expert opinion by Fiocco, circa 1930s-1940s

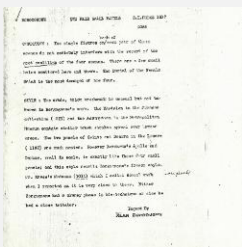
KRESS COLLECTION DIGITAL ARCHIVE



K1107B - Photograph, circa 1930s-1960s



K1107A - Expert opinion by Fiocco, circa 1930s-1940s



K1107A - Alan Burroughs report, circa 1930s-1940s



K1107A - Photograph, circa 1930s-1960s



K1107C - Expert opinion by Fiocco, circa 1930s-1940s

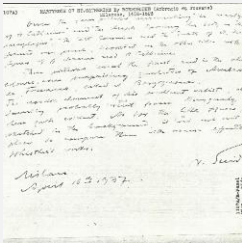
KRESS COLLECTION DIGITAL ARCHIVE



K1107C - Photograph, circa 1930s-1960s



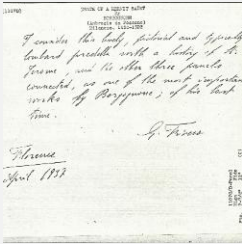
K1107D - Photograph, circa 1930s-1960s



K1107A - Expert opinion by Suida, 1937



K1107A - Expert opinion by Longhi, 1937

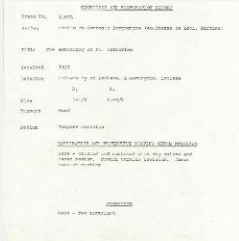


K1107D - Expert opinion by Fiocco, 1937

KRESS COLLECTION DIGITAL ARCHIVE



K1107B - Condition and restoration record, circa 1950s-1960s



K1107A - Condition and restoration record, circa 1950s-1960s



K1107C - Condition and restoration record, circa 1950s-1960s



K1107D - Condition and restoration record, circa 1950s-1960s

RECORD LINK

<https://kress.nga.gov/Detail/objects/2611>