

Workshop of Ambrogio Bergognone  
*Miracle of Saint Jerome*



**KRESS CATALOGUE NUMBER**

K1107D

**IDENTIFIER**

2613

**ARTIST**

Bergognone, Ambrogio, c. 1460-1523  
Anonymous Artist

**NATIONALITY**

Italian

**DATE**

15th century

**MEDIUM**

tempera on panel

**TYPE OF OBJECT**

Painting

**DIMENSIONS**

19 x 28 cm (7-1/2 x 11 in)

**LOCATION**

Eskenazi Museum of Art, Indiana University, Bloomington, Indiana

**PROVENANCE**

(Count Alessandro Contini Bonacossi [1878-1955], Rome-Florence); sold to Samuel H. Kress [1863-1955] on 16 June 1937 as Bergognone; gift 1961 to Indiana University Art Museum, Bloomington, no. 62.156.

**ACCESSION NUMBER**

62.156

**KRESS NUMBER**

1107D

**PICHETTO NUMBER**

9368d

# KRESS COLLECTION DIGITAL ARCHIVE

## 1 ACQUISITION

Contini Bonacossi, Alessandro, June 16, 1937

---

## 1 DISTRIBUTION

Gift to Indiana University Art Museum, May 02, 1962

---

## EXTERNAL LINKS

**Related National Gallery of Art Library Image Collections Record**

[https://library.nga.gov/permalink/01NGA\\_INST/1p5jvkq/alma99394783804896](https://library.nga.gov/permalink/01NGA_INST/1p5jvkq/alma99394783804896)

---

## 33 ARCHIVAL ITEMS



K1107D - Expert opinion by Berenson, circa 1920s-1950s



K1107D - Expert opinion by Longhi, circa 1920s-1950s

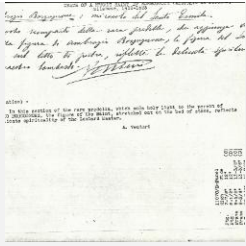


K1107D - Expert opinion by Perkins, circa 1920s-1940s



K1107D - Expert opinion by Suida, circa 1920s-1950s

KRESS COLLECTION DIGITAL ARCHIVE



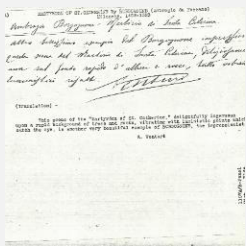
K1107D - Expert opinion by A. Venturi, circa 1920s-1930s



K1107A - Expert opinion by Berenson, circa 1920s-1950s



K1107A - Expert opinion by Perkins, circa 1920s-1940s

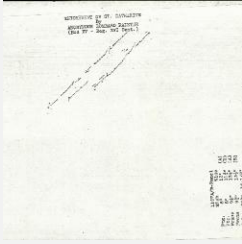


K1107A - Expert opinion by A. Venturi, circa 1920s-1930s

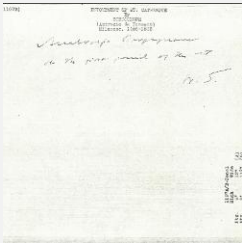


K1107B - Expert opinion by Berenson, circa 1920s-1950s

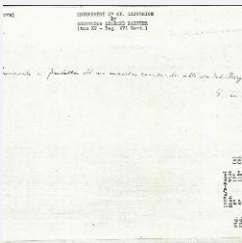
# KRESS COLLECTION DIGITAL ARCHIVE



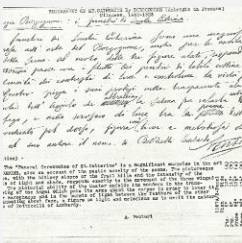
K1107B - Expert opinion by Perkins, circa 1920s-1940s



K1107B - Expert opinion by Suida, circa 1920s-1950s



K1107B - Expert opinion by Longhi, circa 1920s-1950s



K1107B - Expert opinion by A. Venturi, circa 1920s-1930s



K1107C - Expert opinion by Berenson, circa 1920s-1950s

# KRESS COLLECTION DIGITAL ARCHIVE



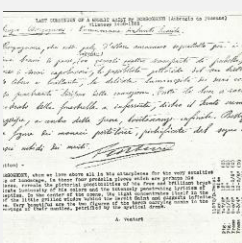
K1107C - Expert opinion by Perkins, circa 1920s-1940s



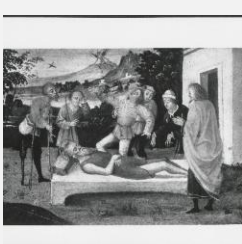
K1107C - Expert opinion by Suida, circa 1920s-1950s



K1107C - Expert opinion by Longhi, circa 1920s-1950s

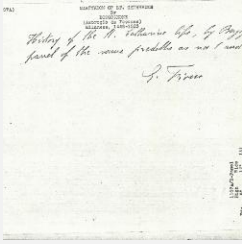


K1107C - Expert opinion by A. Venturi, circa 1920s-1930s

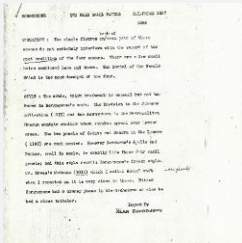


K1107D - Photograph, circa 1930s-1960s

# KRESS COLLECTION DIGITAL ARCHIVE



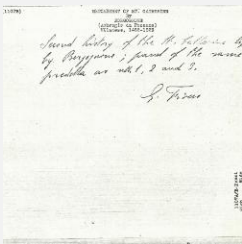
K1107A - Expert opinion by Fiocco, circa 1930s-1940s



K1107A - Alan Burroughs report, circa 1930s-1940s



K1107A - Photograph, circa 1930s-1960s



K1107B - Expert opinion by Fiocco, circa 1930s-1940s



K1107B - Photograph, circa 1930s-1960s

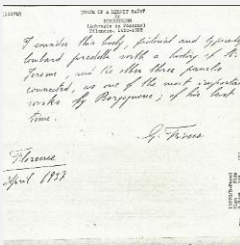
# KRESS COLLECTION DIGITAL ARCHIVE



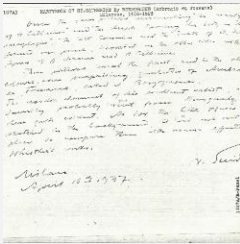
K1107C - Expert opinion by Fiocco, circa 1930s-1940s



K1107C - Photograph, circa 1930s-1960s



K1107D - Expert opinion by Fiocco, 1937

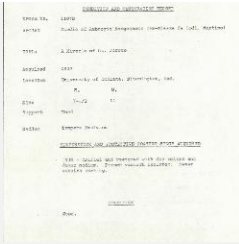


K1107A - Expert opinion by Suida, 1937

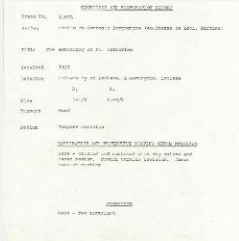


K1107A - Expert opinion by Longhi, 1937

# KRESS COLLECTION DIGITAL ARCHIVE



K1107D - Condition and restoration record, circa 1950s-1960s



K1107A - Condition and restoration record, circa 1950s-1960s



K1107B - Condition and restoration record, circa 1950s-1960s



K1107C - Condition and restoration record, circa 1950s-1960s

## RECORD LINK

<https://kress.nga.gov/Detail/objects/2613>