

**Bernardino Lanino, c. 1509-died after 1581**  
***Madonna and Child***



**KRESS CATALOGUE NUMBER**

K1126

**IDENTIFIER**

2636

**ARTIST**

Lanino, Bernardino, c. 1509-died after 1581

**NATIONALITY**

Italian

**DATE**

16th century

**MEDIUM**

tempera on panel

**TYPE OF OBJECT**

Painting

**DIMENSIONS**

51.1 x 34.3 cm (20-1/8 x 13-1/2 in)

**LOCATION**

Eskenazi Museum of Art, Indiana University, Bloomington, Indiana

**PROVENANCE**

(Count Alessandro Contini Bonacossi [1878-1955] Rome-Florence); sold to Samuel H. Kress [1863-1955] on 16 June 1937; gift 1961 to Indiana University Art Museum, Bloomington, no. 62.165.

**ACCESSION NUMBER**

62.165

**KRESS NUMBER**

1126

**PICETTO NUMBER**

9406

---

**2 ACQUISITIONS**

Contini Bonacossi, Alessandro, June 16, 1937

Contini Bonacossi, Alessandro, June 29, 1937

---

**1 DISTRIBUTION**

Gift to Indiana University Art Museum, May 02, 1962

---

**EXTERNAL LINKS**

**Related National Gallery of Art Library Image Collections Record**

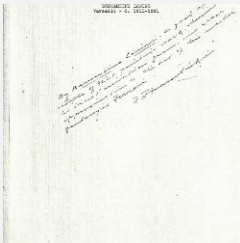
[https://library.nga.gov/permalink/01NGA\\_INST/1p5jvkq/alma99396773804896](https://library.nga.gov/permalink/01NGA_INST/1p5jvkq/alma99396773804896)

---

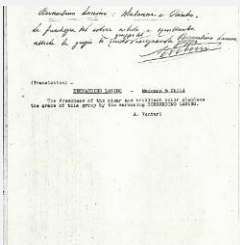
**9 ARCHIVAL ITEMS**



K1126 - Expert opinion by Berenson, circa 1920s-1950s

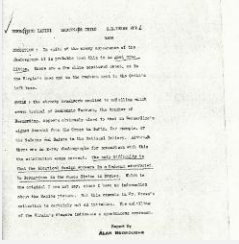


K1126 - Expert opinion by Perkins, circa 1920s-1940s



K1126 - Expert opinion by A. Venturi, circa 1920s-1930s

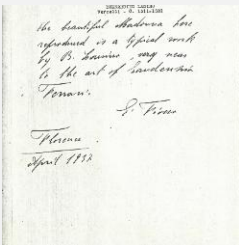
# KRESS COLLECTION DIGITAL ARCHIVE



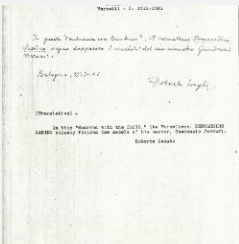
K1126 - Alan Burroughs report, circa 1930s-1940s



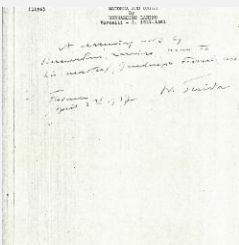
K1126 - Photograph, circa 1930s-1960s



K1126 - Expert opinion by Fiocco, 1937

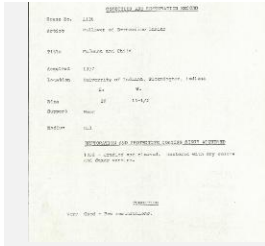


K1126 - Expert opinion by Longhi, 1937



K1126 - Expert opinion by Suida, 1937

# KRESS COLLECTION DIGITAL ARCHIVE



K1126 - Condition and restoration record, circa 1950s-1960s

---

## RECORD LINK

<https://kress.nga.gov/Detail/objects/2636>