

Paulus Moreelse, 1571-1638
Portrait of Henrica Ploost van Amstel



KRESS CATALOGUE NUMBER

K1132

IDENTIFIER

2640

ARTIST

Moreelse, Paulus, 1571-1638

NATIONALITY

Dutch

DATE

1625

MEDIUM

oil on canvas

TYPE OF OBJECT

Painting

DIMENSIONS

121.7 x 96.9 cm (47-7/8 x 38-1/8 in)

LOCATION

Allentown Art Museum, Allentown, Pennsylvania

PROVENANCE

Sir William Hutt [1801-1882]; his wife, Lady Frances Anna Jane [d. 1886], Appley Towers, Isle of Wight; (sale, Christie's, London, 20 June 1913, no. 105); (Lewis and Simmons, London); (Asher Wertheimer [d. 1918], London); (his sale, Christie's, London, 18 June 1920, no. 31); (Clements). (Kleinberger Gallery, New York) in 1938; (M. Knoedler & Co., London, New York, and Paris). (John Levy Galleries); sold to Samuel H. Kress [1863-1955] on 23 May 1938; gift to the National Gallery of Art in 1943; deaccessioned in 1957 and returned to the Samuel H. Kress Foundation; gift to the Allentown Art Museum in 1961, no. 1961.38.

KRESS COLLECTION DIGITAL ARCHIVE

ACCESSION NUMBER

1961.038.000

KRESS NUMBER

1132

PICHETTO NUMBER

9655

LEGACY NGA NUMBER

732

1 ACQUISITION

John Levy Galleries, May 23, 1938

3 DISTRIBUTIONS

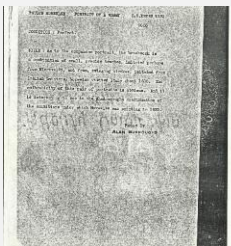
Gift to National Gallery of Art, March 31, 1943

Deaccession by National Gallery of Art, December 05, 1957

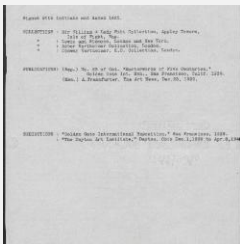
Gift to Allentown Art Museum, December 09, 1961

EXTERNAL LINKS**Related National Gallery of Art Library Image Collections Record**

https://library.nga.gov/permalink/01NGA_INST/1p5jvkq/alma991597143804896

6 ARCHIVAL ITEMS

K1132 - Alan Burroughs report, circa 1930s-1940s



K1132 - Art object record, circa 1930s-1950s

KRESS COLLECTION DIGITAL ARCHIVE



K1132 - Photograph, circa 1930s-1960s



K1132 - Photograph, circa 1930s-1960s



K1132 - National Gallery of Art mounted photograph, circa 1940s-1950s



K1132 - Condition and restoration record, circa 1950s-1960s

RECORD LINK

<https://kress.nga.gov/Detail/objects/2640>