

Giovanni del Biondo, active 1356-1399
Annunciation



KRESS CATALOGUE NUMBER

K1161

IDENTIFIER

2672

ARTIST

Giovanni del Biondo, active 1356-1399

NATIONALITY

Italian

DATE

1369-71

MEDIUM

tempera on panel

TYPE OF OBJECT

Painting

DIMENSIONS

21.3 x 42.5 cm (8-3/8 x 16-3/4 in)

LOCATION

Samek Art Museum Bucknell University, Lewisburg, Pennsylvania

PROVENANCE

Pazzagli, Florence. Elia Volpi [1858-1938], Florence; (his sale, American Art Association, New York, 2 April 1927, no. 373, as Giovanni del Biondo). (Umberto Pini, Florence and Bologna), c. 1929. Luigi Albright, Florence, c. 1929. [1] (Count Alessandro Contini Bonacossi [1878-1955], Florence - Rome); sold to Samuel H. Kress [1863-1955] on 16 September 1938; gift to the National Gallery of Art in 1939; deaccessioned in 1952 and returned to the Samuel H. Kress Foundation; gift to the Samek Art Museum Bucknell University in 1961, no. BL-K6. [1] Fern Rusk Shapley, *Paintings from the Samuel H. Kress Collection, vol. I: Italian Schools XIII-XV Century*, London, 1966: 36 does not mention Pini or Albright. This information is from the Getty Provenance Index.

ACCESSION NUMBER

1961.K.1161

KRESS NUMBER

1161

LEGACY NGA NUMBER

486

2 ACQUISITIONS

Contini Bonacossi, Alessandro, September 16, 1938 [1]

KRESS COLLECTION DIGITAL ARCHIVE

Contini Bonacossi, Alessandro, 1938

3 DISTRIBUTIONS

Gift to National Gallery of Art, June 29, 1939

Deaccession by National Gallery of Art, October 15, 1952

Gift to Samek Art Museum Bucknell University, December 09, 1961

EXTERNAL LINKS

Related National Gallery of Art Library Image Collections Record

https://library.nga.gov/permalink/01NGA_INST/1p5jvkq/alma991612603804896

12 ARCHIVAL ITEMS



K1161 - Expert opinion by Berenson, circa 1920s-1950s



K1161 - Expert opinion by Longhi, circa 1920s-1950s

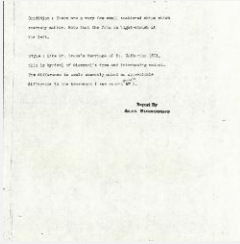


K1161 - Expert opinion by Perkins, circa 1920s-1940s

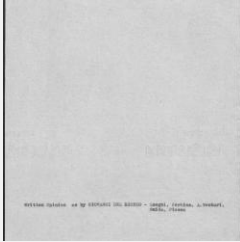


K1161 - Expert opinion by A. Venturi, circa 1920s-1930s

KRESS COLLECTION DIGITAL ARCHIVE



K1161 - Alan Burroughs report, circa 1930s-1940s



K1161 - Art object record, circa 1930s-1950s



K1161 - Photograph, circa 1930s-1960s



K1161 - Photograph, circa 1930s-1960s



K1161 - Expert opinion by Fiocco, 1938

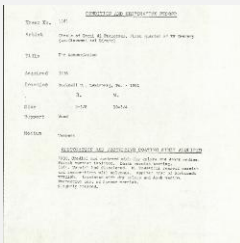
KRESS COLLECTION DIGITAL ARCHIVE



K1161 - Expert opinion by Suida, 1938



K1161 - National Gallery of Art mounted photograph, circa 1940s-1950s



K1161 - Condition and restoration record, circa 1950s-1960s

RECORD LINK

<https://kress.nga.gov/Detail/objects/2672>