

Italian 15th century (School of the Marches)
Madonna and Child Enthroned Between Saints Lucy and Eligius



KRESS CATALOGUE NUMBER

K1162

IDENTIFIER

2673

ARTIST

Italian 15th Century

NATIONALITY

Italian

DATE

c. 15th c.

MEDIUM

tempera on panel

TYPE OF OBJECT

Painting

DIMENSIONS

139.4 x 96.8 cm (54-7/8 x 38-1/8 in)

LOCATION

The Benton Museum of Art at Pomona College, Claremont, California

HISTORICAL ATTRIBUTION

Maestro della Cùlla, active 15th century

PROVENANCE

(Mori, Paris); sold 1913 to Dan Fellows Platt [1873-1938], Englewood, New Jersey, as Maestro della Culla; [1] Ethel Bliss Platt, as Trustee of the Estate of Dan Fellows Platt; sold to Samuel H. Kress [1863-1955] on 17 March 1939 as Della Culla or Lorenzo da San Severino; gift to the Pomona College Museum of Art in 1961, no. P61.1.5. [1] See Dan Fellows Platt Papers, Department of

KRESS COLLECTION DIGITAL ARCHIVE

Rare Books and Special Collections, Princeton University, NJ; box 2, folder 23, call number C0860.

ACCESSION NUMBER

P61.1.5

KRESS NUMBER

1162

PICHETTO NUMBER

9938

LEGACY NGA NUMBER

860

1 ACQUISITION

Platt, Dan Fellows [estate of], March 17, 1939

2 DISTRIBUTIONS

Loan to National Gallery of Art, January 23, 1946

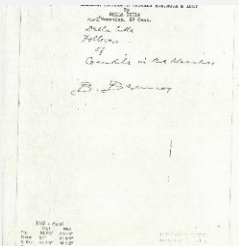
Gift to Pomona College, December 09, 1961

EXTERNAL LINKS

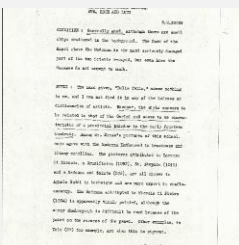
Related National Gallery of Art Library Image Collections Record

https://library.nga.gov/permalink/01NGA_INST/1p5jkvq/alma991110383804896

7 ARCHIVAL ITEMS

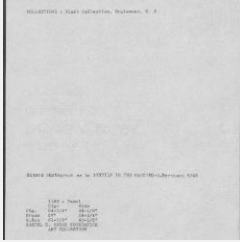


K1162 - Expert opinion by Berenson, circa 1920s-1950s



K1162 - Alan Burroughs report, circa 1930s-1940s

KRESS COLLECTION DIGITAL ARCHIVE



K1162 - Art object record, circa 1930s-1950s



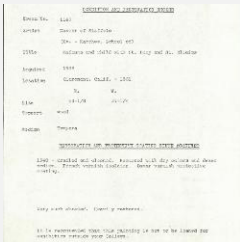
K1162 - Photograph, circa 1930s-1960s



K1162 - Photograph, circa 1930s-1960s



K1162 - National Gallery of Art mounted photograph, circa 1940s-1950s



K1162 - Condition and restoration record, circa 1950s-1960s

RECORD LINK

<https://kress.nga.gov/Detail/objects/2673>