

**Guidoccio Cozzarelli, 1450-1516/1517**  
*The Crucifixion*



**KRESS CATALOGUE NUMBER**

K1173

**IDENTIFIER**

2687

**ARTIST**

Cozzarelli, Guidoccio, 1450-1516/1517

**NATIONALITY**

Italian

**DATE**

c. 1483-84

**MEDIUM**

tempera on panel, transferred to masonite

**TYPE OF OBJECT**

Painting

**DIMENSIONS**

50.2 x 30.8 cm (19-3/4 x 12-1/8 in)

**LOCATION**

University of Arizona Museum of Art, Tucson, Arizona

# KRESS COLLECTION DIGITAL ARCHIVE

## PROVENANCE

Possibly Mrs Worthington, London, in 1904. [1] J. Pearsall Smith, London. [2] William B. Chamberlin, Sussex; (his estate sale, Christie's, London, 25 February 1938, no. 27); bought by (Giuseppe Bellesi, London). [3] (Count Alessandro Contini Bonacossi [1878-1955] Rome-Florence); sold to Samuel H. Kress [1863-1955] on 1 September 1939; gift to University of Arizona Museum of Art in 1961, no. 1961.013.066. [1] A painting lent by Mrs. Worthington to Pictures of the School of Siena, Burlington Fine Arts Club, London, 1904, no. 45, may be identical with K1173 although the dimensions are slightly larger. [2] According to the 1938 Chamberlin auction catalogue. [3] Purchaser per auctioneer's catalogue, Christie's Archive, London.

## ACCESSION NUMBER

1961.013.006

## KRESS NUMBER

1173

## LEGACY NGA NUMBER

841

---

## 1 ACQUISITION

Contini Bonacossi, Alessandro, September 1, 1939 [1]

---

## 2 DISTRIBUTIONS

Loan to National Gallery of Art, January 23, 1946

Gift to University of Arizona Museum of Art, December 09, 1961

---

## EXTERNAL LINKS

### Related Collection Record

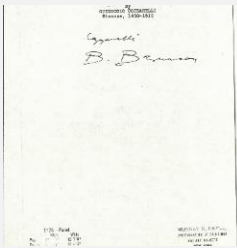
<https://u.arizona.pastperfectonline.com/webobject/49492D11-176F-45F7-A552-750343786518>

### Related National Gallery of Art Library Image Collections Record

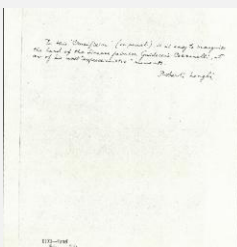
[https://library.nga.gov/permalink/01NGA\\_INST/1p5jvkq/alma991612563804896](https://library.nga.gov/permalink/01NGA_INST/1p5jvkq/alma991612563804896)

---

## 12 ARCHIVAL ITEMS



K1173 - Expert opinion by Berenson, circa 1920s-1950s

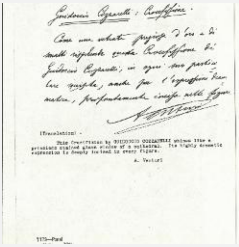


K1173 - Expert opinion by Longhi, circa 1920s-1950s

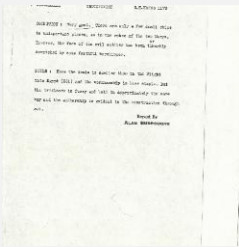
# KRESS COLLECTION DIGITAL ARCHIVE



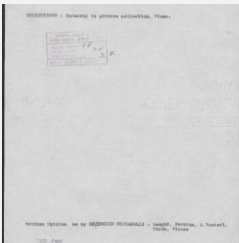
K1173 - Expert opinion by Perkins, circa 1920s-1940s



K1173 - Expert opinion by A. Venturi, circa 1920s-1930s



K1173 - Alan Burroughs report, circa 1930s-1940s



K1173 - Art object record, circa 1930s-1950s



K1173 - Photograph, circa 1930s-1960s

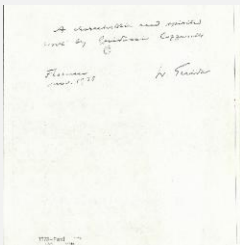
# KRESS COLLECTION DIGITAL ARCHIVE



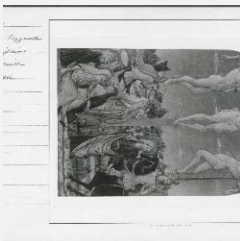
K1173 - Photograph, circa 1930s-1960s



K1173 - Expert opinion by Fiocco, 1938



K1173 - Expert opinion by Suida, 1938



K1173 - National Gallery of Art mounted photograph, circa 1940s-1950s



K1173 - Condition and restoration record, circa 1950s-1960s

## RECORD LINK

<https://kress.nga.gov/Detail/objects/2687>