

Follower of Parmigianino
Portrait of a Young Woman



KRESS CATALOGUE NUMBER

K1175

IDENTIFIER

2689

ARTIST

Parmigianino, 1503-1540
Anonymous Artist

NATIONALITY

Italian

DATE

after 1532

MEDIUM

tempera on panel

TYPE OF OBJECT

Painting

DIMENSIONS

42 x 32.7 cm (16-1/2 x 12-13/16 in)

LOCATION

Doris Ulmann Galleries, Berea College, Berea, KY

PROVENANCE

Probably Giulio Sterbini [d. 1911] Rome. (Count Alessandro Contini Bonacossi [1878-1955] Rome-Florence); sold to Samuel H. Kress [1863-1955] on 1 September 1939 as Parmigianino; gift 1961 to Doris Ulmann Galleries, Berea College, no. 140.16.

KRESS COLLECTION DIGITAL ARCHIVE

ACCESSION NUMBER

140.16

KRESS NUMBER

1175

LEGACY NGA NUMBER

866

1 ACQUISITION

Contini Bonacossi, Alessandro, September 1, 1939 [1]

2 DISTRIBUTIONS

Loan to National Gallery of Art, January 23, 1946

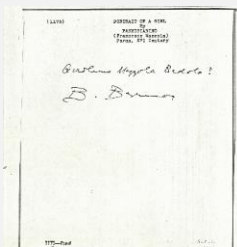
Gift to Doris Ulmann Galleries, Berea College, December 09, 1961

EXTERNAL LINKS

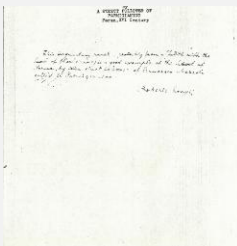
Related National Gallery of Art Library Image Collections Record

https://library.nga.gov/permalink/01NGA_INST/1p5jkhvq/alma99397513804896

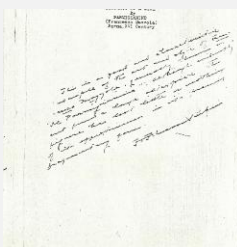
11 ARCHIVAL ITEMS



K1175 - Expert opinion by Berenson, circa 1920s-1950s

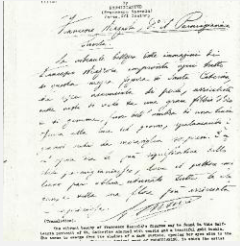


K1175 - Expert opinion by Longhi, circa 1920s-1950s

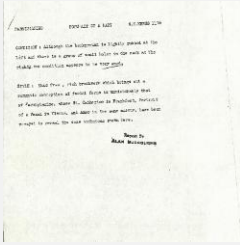


K1175 - Expert opinion by Perkins, circa 1920s-1940s

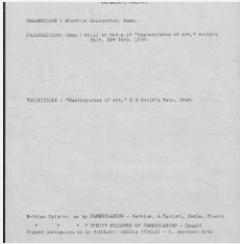
KRESS COLLECTION DIGITAL ARCHIVE



K1175 - Expert opinion by A. Venturi, circa 1920s-1930s



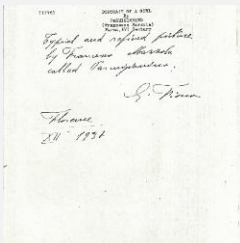
K1175 - Alan Burroughs report, circa 1930s-1940s



K1175 - Art object record, circa 1930s-1950s

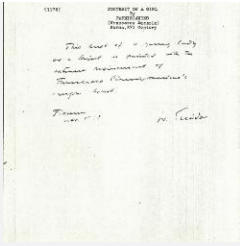


K1175 - Photograph, circa 1930s-1960s



K1175 - Expert opinion by Fiocco, 1938

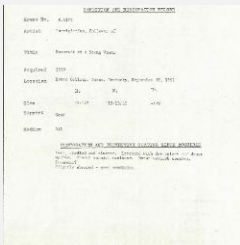
KRESS COLLECTION DIGITAL ARCHIVE



K1175 - Expert opinion by Suida, 1938



K1175 - National Gallery of Art mounted photograph, circa 1940s-1950s



K1175 - Condition and restoration record, circa 1950s-1960s

RECORD LINK

<https://kress.nga.gov/Detail/objects/2689>