

**Taddeo di Bartolo, c. 1362-c. 1422**  
***Madonna and Child***



**KRESS CATALOGUE NUMBER**

K1179

**IDENTIFIER**

2693

**ARTIST**

Taddeo di Bartolo, c. 1362-c. 1422

**NATIONALITY**

Italian

**DATE**

c. 1410

**MEDIUM**

tempera and gold on panel

**TYPE OF OBJECT**

Painting

**DIMENSIONS**

100.3 x 68 cm (39-1/2 x 26-3/4 in)

**LOCATION**

Philbrook Museum of Art, Tulsa, Oklahoma

**PROVENANCE**

Anonymous Collection, Siena, Italy. (Count Alessandro Contini Bonacossi [1878-1955], Rome-Florence); sold to Samuel H. Kress [1863-1955] on 1 September 1939; gift 1961 to Philbrook Museum of Art, Tulsa, no. 1961. 9.22.

**ACCESSION NUMBER**

1961.9.22

**KRESS NUMBER**

1179

---

**1 ACQUISITION**

Contini Bonacossi, Alessandro, September 1, 1939 [1]

---

**1 DISTRIBUTION**

Gift to Philbrook Museum of Art, December 09, 1961

---

**EXTERNAL LINKS**

**Related Collection Record**

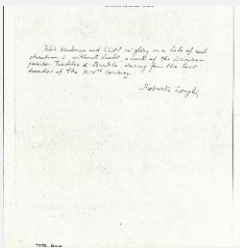
<http://philbrook.emuseum.com/objects/3618>

**Related National Gallery of Art Library Image Collections Record**

[https://library.nga.gov/permalink/01NGA\\_INST/1p5jkvq/alma99400883804896](https://library.nga.gov/permalink/01NGA_INST/1p5jkvq/alma99400883804896)

---

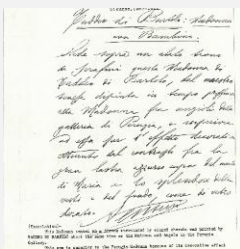
**8 ARCHIVAL ITEMS**



K1179 - Expert opinion by Longhi, circa 1920s-1950s

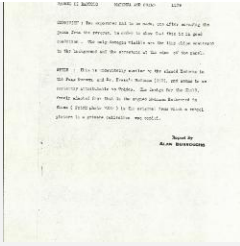


K1179 - Expert opinion by Perkins, circa 1920s-1940s



K1179 - Expert opinion by A. Venturi, circa 1920s-1930s

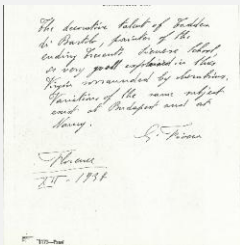
# KRESS COLLECTION DIGITAL ARCHIVE



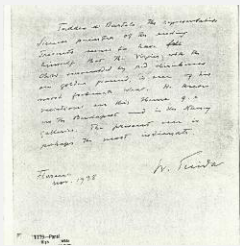
K1179 - Alan Burroughs report, circa 1930s-1940s



K1179 - Photograph, circa 1930s-1960s



K1179 - Alan Burroughs report, 1938



K1179 - Expert opinion by Suida, 1938



K1179 - Condition and restoration record, circa 1950s-1960s

## RECORD LINK

<https://kress.nga.gov/Detail/objects/2693>