

Workshop of Bartolomeo Bulgarini  
*Saint Andrew*



**KRESS CATALOGUE NUMBER**

K1224B

**IDENTIFIER**

2740

**ARTIST**

Bulgarini, Bartolomeo, c. 1300-1378  
Anonymous Artist

**NATIONALITY**

Italian

**DATE**

c. 1350

**MEDIUM**

tempera and tooled gold on panel

**TYPE OF OBJECT**

Painting

**DIMENSIONS**

33.7 x 22.2 cm (12-7/8 x 8-1/8 in)

**LOCATION**

Fairfield University Art Museum, Fairfield, Connecticut

**HISTORICAL ATTRIBUTION**

Lorenzetti, Pietro, active 1306-1345

**PROVENANCE**

(Count Alessandro Contini Bonacossi [1878-1955] Rome Florence) sold to Samuel H. Kress [1863-1955] on 1 September 1939 as Pietro Lorenzetti; gift 1962 to the Museum of Art, Science and Industry, Bridgeport, CT; gift 2002 to the Bellarmine Museum of Art,

# KRESS COLLECTION DIGITAL ARCHIVE

Fairfield University, no. K1224B.

## ACCESSION NUMBER

2009.01.02

## KRESS NUMBER

1224B

---

## 1 ACQUISITION

Contini Bonacossi, Alessandro, September 1, 1939 [1]

---

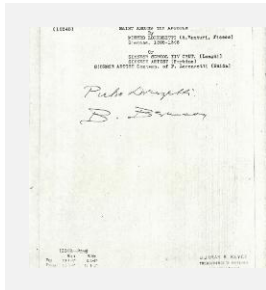
## EXTERNAL LINKS

### Related National Gallery of Art Library Image Collections Record

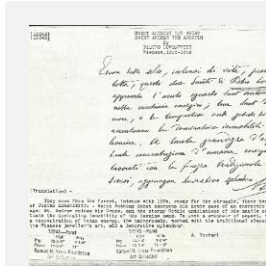
[https://library.nga.gov/permalink/01NGA\\_INST/1p5jkvq/alma99423783804896](https://library.nga.gov/permalink/01NGA_INST/1p5jkvq/alma99423783804896)

---

## 13 ARCHIVAL ITEMS



K1224B - Expert opinion by Berenson, circa 1920s-1950s



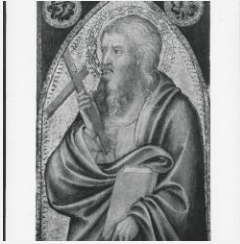
K1224A - Expert opinion by A. Venturi, circa 1920s-1930s



K1224A - Expert opinion by Perkins, circa 1920s-1940s



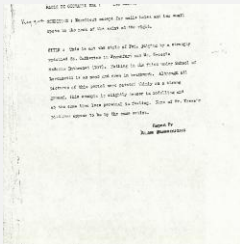
K1224A - Expert opinion by Berenson, circa 1920s-1950s



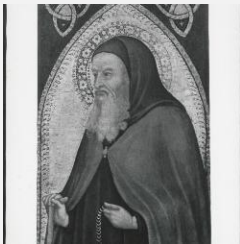
K1224B - Photograph, circa 1930s-1960s



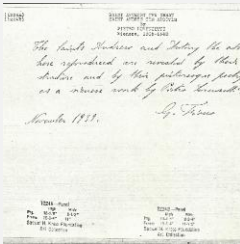
K1224A - Art object record, circa 1930s-1950s



K1224A - Alan Burroughs report, circa 1930s-1940s

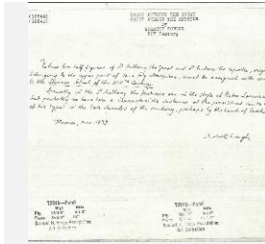


K1224A - Photograph, circa 1930s-1960s

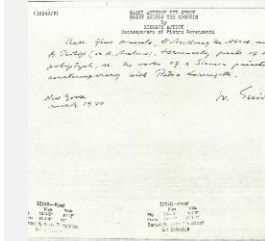


K1224A - Expert opinion by Fiocco, 1939

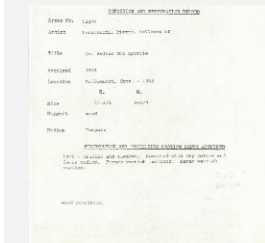
# KRESS COLLECTION DIGITAL ARCHIVE



K1224A - Expert opinion by Longhi, 1939



K1224A - Expert opinion by Suida, 1940



K1224B - Condition and restoration record, circa 1950s-1960s



K1224A - Condition and restoration record, circa 1950s-1960s

## RECORD LINK

<https://kress.nga.gov/Detail/objects/2740>