

Allegretto Nuzi, born 1316-1320, died 1373/1374
Christ Blessing



KRESS CATALOGUE NUMBER

K1226

IDENTIFIER

2742

ARTIST

Allegretto Nuzi, born 1316-1320, died 1373/1374

NATIONALITY

Italian

DATE

c. 1360

MEDIUM

tempera on panel

TYPE OF OBJECT

Painting

DIMENSIONS

18.7 x 18.1 cm (7-3/8 x 7-1/8 in)

LOCATION

Bowdoin College Museum of Art, Brunswick, Maine

PROVENANCE

Enrico Marinucci, Rome, 1934. [1] (Count Alessandro Alessandro Contini Bonacossi [1878-1955] Rome-Florence); sold to Samuel H. Kress [1863-1955] on 1 September 1939; gift to Bowdoin College Museum of Art, no. 1961.100.004.

[1] Described and illustrated by Wilhelm Suida, "Italian Primitives in the Marinucci Collection in Rome," *Apollo* XX (September 1934), p. 122. Does not appear to be included in a letter dated 1 October 1936 from an Enrico Capiello, offering pictures on behalf of Marinucci to the director of the William Rockhill Nelson Gallery (Philbrook Museum of Art, Tulsa, curatorial file for Tanzio da Varallo, 1944.2, copy NGA curatorial records). It is likely that those paintings came from the collection of Marinucci's uncle, Cardinal Pietro Gasparri [1852-1934].

KRESS COLLECTION DIGITAL ARCHIVE

ACCESSION NUMBER

1961.100.4

KRESS NUMBER

1226

LEGACY NGA NUMBER

864

1 ACQUISITION

Contini Bonacossi, Alessandro, September 1, 1939 [1]

2 DISTRIBUTIONS

Loan to National Gallery of Art, January 23, 1946

Gift to Bowdoin College Museum of Art, December 09, 1961

EXTERNAL LINKS

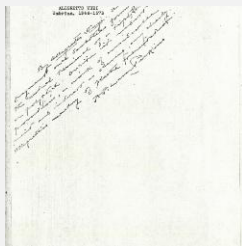
Related National Gallery of Art Library Image Collections Record

https://library.nga.gov/permalink/01NGA_INST/1p5jkhvq/alma99404423804896

12 ARCHIVAL ITEMS



K1226 - Expert opinion by Berenson, circa 1920s-1950s



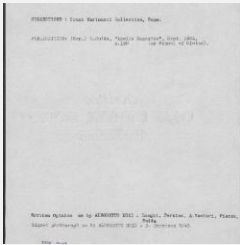
K1226 - Expert opinion by Perkins, circa 1920s-1940s



K1226 - Expert opinion by A. Venturi, circa 1920s-1930s



K1226 - Alan Burroughs report, circa 1930s-1940s



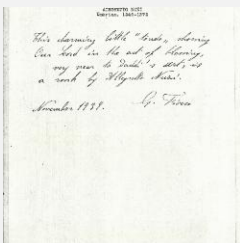
K1226 - Art object record, circa 1930s-1950s



K1226 - Photograph, circa 1930s-1960s

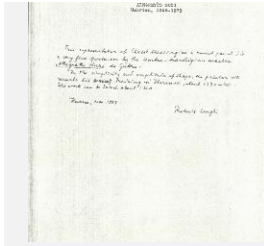


K1226 - Photograph, circa 1930s-1960s

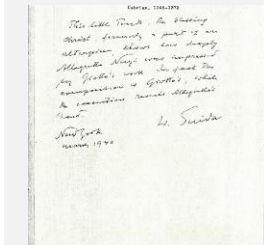


K1226 - Expert opinion by Fiocco, 1939

KRESS COLLECTION DIGITAL ARCHIVE



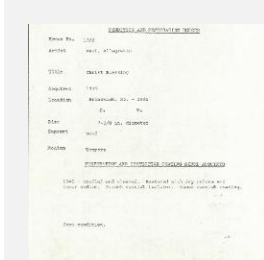
K1226 - Expert opinion by Longhi, 1939



K1226 - Expert opinion by Suida, 1940



K1226 - National Gallery of Art mounted photograph, circa 1940s-1950s



K1226 - Condition and restoration record, circa 1950s-1960s

RECORD LINK

<https://kress.nga.gov/Detail/objects/2742>