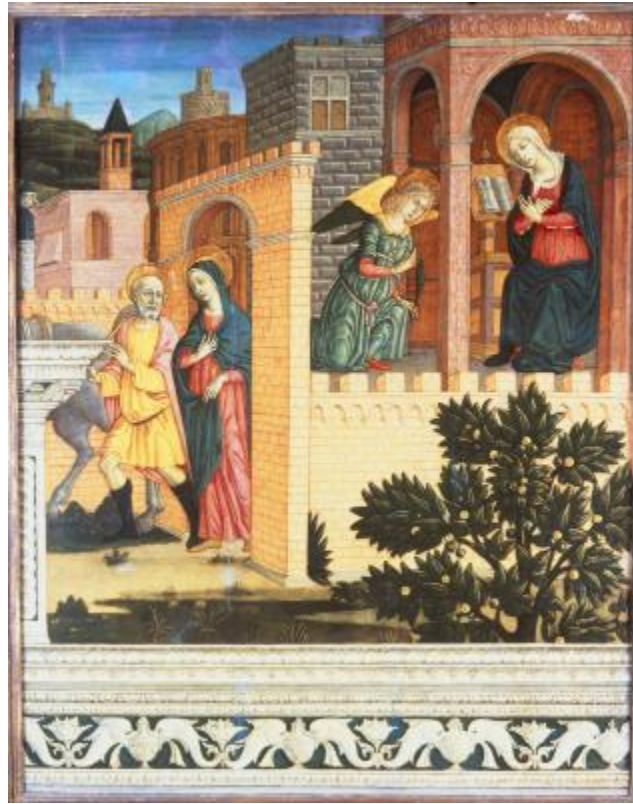


Guidoccio Cozzarelli, 1450-1516/1517
The Annunciation and the Journey to Bethlehem



KRESS CATALOGUE NUMBER

K1286

IDENTIFIER

2780

ARTIST

Cozzarelli, Guidoccio, 1450-1516/1517

NATIONALITY

Italian

DATE

c. 1480-90

MEDIUM

tempera on panel

TYPE OF OBJECT

Painting

DIMENSIONS

68 x 54 cm (26-3/4 x 21-1/4 in)

LOCATION

Low Art Museum, University of Miami, Coral Gables, Florida

PROVENANCE

Dr. Friedrich Lippmann [1838-1903], Berlin; (sale, Rudolph Lepke, Berlin, 26 November 1912, no. 35 as Domenico Cozzarelli); (F. Kleinberger Galleries, Paris and New York); sold 1922 to (Robert Langton Douglas [1864-1951], London) until at least 1928. [1] London art market. (Count Alessandro Contini Bonacossi [1878-1955], Rome-Florence); sold to Samuel H. Kress [1863-1955] on 1 September 1939; gift 1943 to the National Gallery of Art; deaccessioned in 1952 and returned to the Samuel H. Kress Foundation; gift to Lowe Art Museum, University of Miami, Coral Gables, no. 61.022.000. [1] Kleinberger Gallery stock card no. 15498, Department of European Paintings, Metropolitan Museum of Art. Lent, presumably for sale, by Douglas to Antiques and Works of

KRESS COLLECTION DIGITAL ARCHIVE

Art, Olympia, London, 19 July - 1 August 1928, no. X-21.

ACCESSION NUMBER

61.022.000

KRESS NUMBER

1286

LEGACY KRESS NUMBER

561

LEGACY NGA NUMBER

507

1 ACQUISITION

Contini Bonacossi, Alessandro, September 1, 1939 [2]

4 DISTRIBUTIONS

Loan to National Gallery of Art, February 21, 1941

Gift to National Gallery of Art, March 31, 1943

Deaccession by National Gallery of Art, December 05, 1957

Gift to Lowe Art Museum, University of Miami, December 09, 1961

EXTERNAL LINKS

Related Collection Record

<https://emuseum1.as.miami.edu/objects/1116>

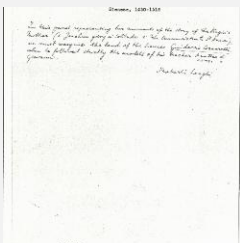
Related National Gallery of Art Library Image Collections Record

https://library.nga.gov/permalink/01NGA_INST/1p5jvkq/alma99405163804896

10 ARCHIVAL ITEMS



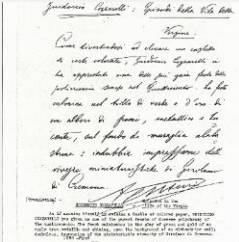
K1286 - Expert opinion by Berenson, circa 1920s-1950s



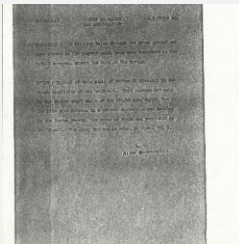
K1286 - Expert opinion by Longhi, circa 1920s-1950s



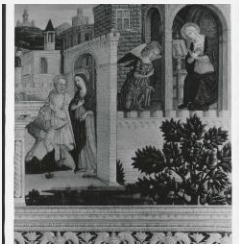
K1286 - Expert opinion by Perkins, circa 1920s-1940s



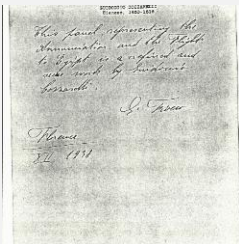
K1286 - Expert opinion by A. Venturi, circa 1920s-1930s



K1286 - Alan Burroughs report, circa 1930s-1940s

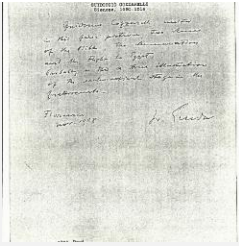


K1286 - Photograph, circa 1930s-1960s



K1286 - Expert opinion by Fiocco, 1938

KRESS COLLECTION DIGITAL ARCHIVE



K1286 - Expert opinion by Suida, 1938



K1286 - National Gallery of Art mounted photograph, circa 1940s-1950s



K1286 - Condition and restoration record, circa 1950s-1960s

RECORD LINK

<https://kress.nga.gov/Detail/objects/2780>