

**Bernardo Daddi, active by 1320, died probably 1348**  
*Virgin and Child with Donor*



**KRESS CATALOGUE NUMBER**

K1290

**IDENTIFIER**

2784

**ARTIST**

Daddi, Bernardo, active by 1320, died probably 1348

**NATIONALITY**

Italian

**DATE**

late 1340s

**MEDIUM**

tempera and gold on panel

**TYPE OF OBJECT**

Painting

**DIMENSIONS**

109.5 x 47 cm (43 x 18-1/2 in)

**LOCATION**

Seattle Art Museum, Seattle, Washington

# KRESS COLLECTION DIGITAL ARCHIVE

## PROVENANCE

English Private Collection. Prince Vladimir Golitzyn, until 1927. (Durlacher Brothers, New York) by 1928; sold to Marquis H. de Talleyrand, Palazzo Orsini, Rome on 28 December 1929. [1] Count Alessandro Contini Bonacossi [1878-1955], Rome-Florence); sold to Samuel H. Kress [1863-1955] on 1 September 1939; gift to the National Gallery of Art in 1943; deaccessioned in 1952 and returned to the Samuel H. Kress Foundation; gift 1961 to Seattle Art Museum in 1961, no. 61.151. [1] Durlacher Bros. Records, 1919-1973, Getty Research Institute, Los Angeles. Record Number 950003, Series II, Box 4, Folder 17. The painting was lent by Durlacher to the Exhibition of Old Masters and Works of Art, Art Institute Kansas City, 1928, no. 3.

## ACCESSION NUMBER

61.151

## KRESS NUMBER

1290

## LEGACY KRESS NUMBER

567

## LEGACY NGA NUMBER

511

---

## 1 ACQUISITION

Contini Bonacossi, Alessandro, September 1, 1939 [2]

---

## 4 DISTRIBUTIONS

Loan to National Gallery of Art, February 21, 1941

Gift to National Gallery of Art, March 31, 1943

Deaccession by National Gallery of Art, October 15, 1952

Gift to Seattle Art Museum, December 09, 1961

---

## EXTERNAL LINKS

### Related Collection Record

<http://art.seattleartmuseum.org/objects/13490>

### Related National Gallery of Art Library Image Collections Record

[https://library.nga.gov/permalink/01NGA\\_INST/1p5jkvq/alma99405243804896](https://library.nga.gov/permalink/01NGA_INST/1p5jkvq/alma99405243804896)

---

## 12 ARCHIVAL ITEMS

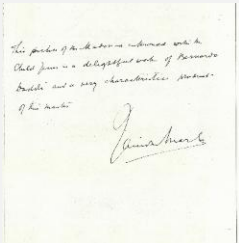


K1290 - Expert opinion by Berenson, circa 1920s-1950s

# KRESS COLLECTION DIGITAL ARCHIVE



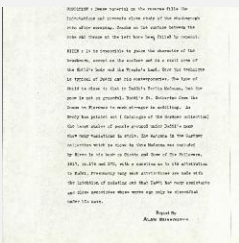
K1290 - Expert opinion by Longhi, circa 1920s-1950s



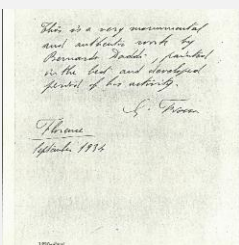
K1290 - Expert opinion by Marle, circa 1920s-1930s



K1290 - Expert opinion by Perkins, circa 1920s-1940s



K1290 - Alan Burroughs report, circa 1930s-1940s



K1290 - Expert opinion by Fiocco, 1934



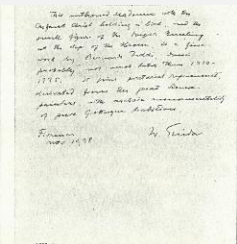
K1290 - Expert opinion by A. Venturi, 1934



K1290 - Photograph, circa 1930s-1960s



K1290 - Photograph, circa 1930s-1960s

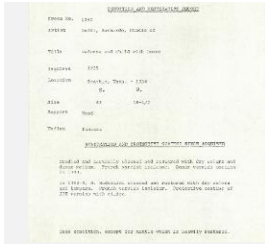


K1290 - Expert opinion by Suida, 1938



K1290 - National Gallery of Art mounted photograph, circa 1940s-1950s

# KRESS COLLECTION DIGITAL ARCHIVE



K1290 - Condition and restoration record, circa 1950s-1960s

---

## RECORD LINK

<https://kress.nga.gov/Detail/objects/2784>