

Lippo Vanni, active 1344-1376

Madonna and Child Enthroned with Donors and Saints Dominic and Elizabeth of Hungary (triptych: center)



KRESS CATALOGUE NUMBER

K1355A

IDENTIFIER

2812

ARTIST

Vanni, Lippo, active 1344-1376

NATIONALITY

Italian

DATE

c. 1343

MEDIUM

tempera on panel

TYPE OF OBJECT

Painting

DIMENSIONS

124.5 x 79.4 cm (49 x 31-1/4 in)

LOCATION

Lowie Art Museum, University of Miami, Coral Gables, Florida

PROVENANCE

(Torrini, Siena); sold to George Dormer Fawcus [1858-1925], Quinto al Mare, Genoa. [1] (Robert Langton Douglas [1864-1951], London). Philip Lehman [1861-1947], New York, by 1928; [2] Robert Lehman [1891-1969], New York; sold to Samuel H. Kress [1863-1955] on 11 June 1943; gift 1961 to the Lowie Art Museum, University of Miami, Coral Gables, no. 61.024.000. [1] Per William Suida, Catalogue of the Samuel H. Kress Collection of Italian Paintings and Sculptures, The William Rockhill Nelson Gallery of Art and Mary Atkins Museum of Fine Arts, Kansas City, 1952, p. 12. [2] Robert Lehman, The Philip Lehman Collection, New York, Paris, 1928, no. 22.

KRESS COLLECTION DIGITAL ARCHIVE

ACCESSION NUMBER

61.024.001

KRESS NUMBER

1355A

PICHETTO NUMBER

11303

LEGACY NGA NUMBER

828

1 ACQUISITION

Lehman, Robert, June 11, 1943

2 DISTRIBUTIONS

Loan to National Gallery of Art, January 23, 1946

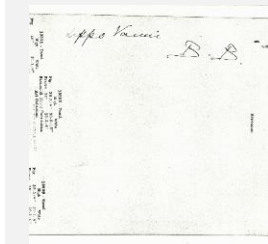
Gift to Lowe Art Museum, University of Miami, December 09, 1961

EXTERNAL LINKS

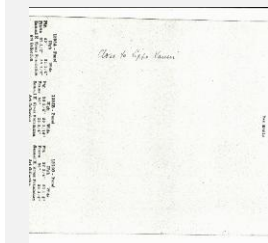
Related National Gallery of Art Library Image Collections Record

https://library.nga.gov/permalink/01NGA_INST/1p5jvkq/alma991100743804896

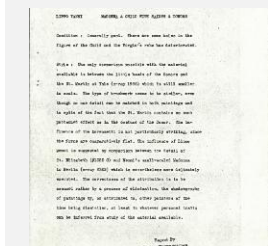
11 ARCHIVAL ITEMS



K1355A - Expert opinion by Berenson, circa 1920s-1950s

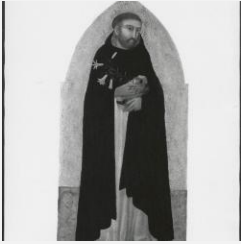


K1355A - Expert opinion by Marle, circa 1920s-1930s

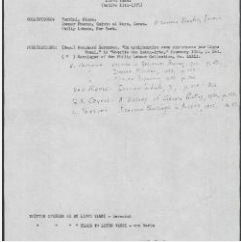


K1355A - Alan Burroughs report, circa 1930s-1940s

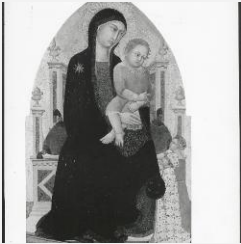
KRESS COLLECTION DIGITAL ARCHIVE



K1355A - Photograph, circa 1930s-1960s



K1355A - Art object record, circa 1930s-1950s



K1355A - Photograph, circa 1930s-1960s

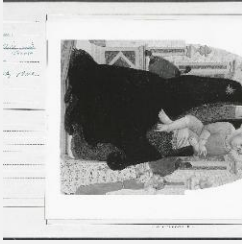


K1355B - Photograph, circa 1930s-1960s



K1355C - Photograph, circa 1930s-1960s

KRESS COLLECTION DIGITAL ARCHIVE



K1355A - National Gallery of Art mounted photograph, circa 1940s-1950s



K1355A - Expert opinion by Suida, 1948



K1355A - Condition and restoration record, circa 1950s-1960s

RELATED ART OBJECTS



K1355A
Lippo Vanni
Madonna and Child Enthroned with Donors and Saints Dominic and Elizabeth of Hungary (triptych: center)
Lowe Art Museum, University of Miami, Coral Gables, Florida

RECORD LINK

<https://kress.nga.gov/Detail/objects/2812>