

**Taddeo Gaddi, active mid-1320s, died 1366**  
***The Prophet Isaiah***



**KRESS CATALOGUE NUMBER**

K1372

**IDENTIFIER**

2818

**ARTIST**

Gaddi, Taddeo, active mid-1320s, died 1366

**NATIONALITY**

Italian

**DATE**

14th century

**MEDIUM**

tempera on panel

**TYPE OF OBJECT**

Painting

**DIMENSIONS**

diameter: 20.3 cm (8 in)

**LOCATION**

Williams College Museum of Art, Williamstown, Massachusetts

**PROVENANCE**

Dan Fellows Platt [1873-1938], Englewood, New Jersey since 1909; [1] sold by the Trustees of the Platt Estate to Samuel H. Kress [1863-1955] on 30 November 1943 as Attributed to Taddeo Gaddi; gift to the Williams College Museum of Art in 1960, n. 60.11. [1] See Dan Fellows Platt Papers, Department of Rare Books and Special Collections, Princeton University, NJ; box 2, folder 23, call number C0860. Bought in Florence, but no provenance information is listed.

# KRESS COLLECTION DIGITAL ARCHIVE

## ACCESSION NUMBER

60.11

## KRESS NUMBER

1372

## PICHETTO NUMBER

11378

## LEGACY NGA NUMBER

803

---

## 1 ACQUISITION

Platt, Dan Fellows (estate of), December 1, 1943

---

## 2 DISTRIBUTIONS

Loan to National Gallery of Art, January 23, 1946

Gift to Williams College Museum of Art, December 09, 1961

---

## EXTERNAL LINKS

### Related Collection Record

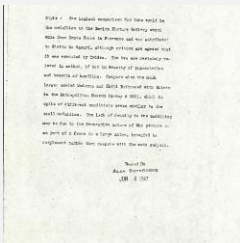
<http://egallery.williams.edu/objects/11387>

### Related National Gallery of Art Library Image Collections Record

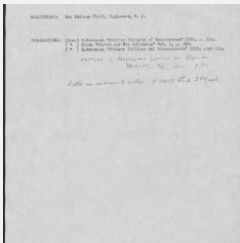
[https://library.nga.gov/permalink/01NGA\\_INST/1p5jkvq/alma991590553804896](https://library.nga.gov/permalink/01NGA_INST/1p5jkvq/alma991590553804896)

---

## 7 ARCHIVAL ITEMS

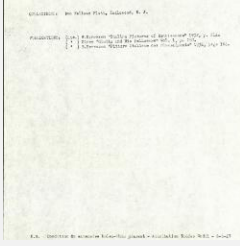


K1372 - Alan Burroughs report, circa 1930s-1940s



K1372 - Art object record, circa 1930s-1950s

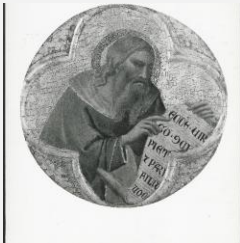
# KRESS COLLECTION DIGITAL ARCHIVE



K1372 - Art object record, circa 1930s-1950s



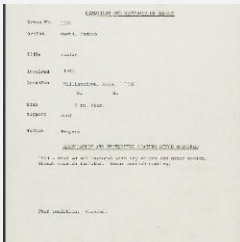
K1372 - Photograph, circa 1930s-1960s



K1372 - Photograph, circa 1930s-1960s



K1372 - National Gallery of Art mounted photograph, circa 1940s-1950s



K1372 - Condition and restoration record, circa 1950s-1960s

## RECORD LINK

<https://kress.nga.gov/Detail/objects/2818>