

Attributed to Benedetto Caliari
The Deposition of Christ



KRESS CATALOGUE NUMBER

K1538

IDENTIFIER

2855

ARTIST

Caliari, Benedetto, 1538-1598

NATIONALITY

Italian

DATE

c. 1577

MEDIUM

oil on canvas

TYPE OF OBJECT

Painting

DIMENSIONS

40.3 x 35.6 cm (15-7/8 x 14 in)

LOCATION

Honolulu Museum of Art, Honolulu, Hawaii

HISTORICAL ATTRIBUTION

Veronese, 1528-1588

PROVENANCE

Jeffrey John Archer, 5th Earl of Amherst [1896-1993], Montreal, Sevenoaks, Kent; (sale, Sotheby's London, 5 May 1946, no. 93 as Veronese); (Fenouil). (Tomas Harris/Spanish Art Gallery, London); half share 10 June 1946 with (Durlacher Brothers, New York); [1] sold to the Samuel H. Kress Foundation on 19 May 1948 as Paolo Veronese; gift to Honolulu Academy of Arts (now Honolulu Museum of Art) in 1961, no. 2990.1. [1] Durlacher Brothers Records 1919-1973, Getty Research Institute, Los Angeles, Record

KRESS COLLECTION DIGITAL ARCHIVE

Number 950003, Series III, Box 18; Series II, Box 14.

ACCESSION NUMBER

2990.1

KRESS NUMBER

1538

PICHETTO NUMBER

48128

1 ACQUISITION

Durlacher Bros., May 19, 1948

1 DISTRIBUTION

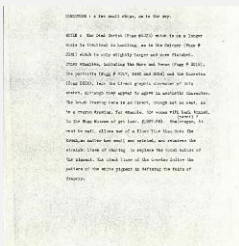
Gift to Honolulu Academy of Arts, December 09, 1961

EXTERNAL LINKS

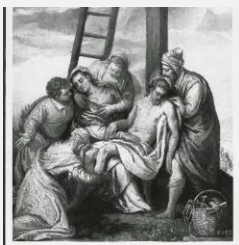
Related National Gallery of Art Library Image Collections Record

https://library.nga.gov/permalink/01NGA_INST/1p5jvkq/alma991591073804896

3 ARCHIVAL ITEMS



K1538 - Alan Burroughs report, circa 1930s-1940s



K1538 - Photograph, circa 1930s-1960s



K1538 - Condition and restoration record, circa 1950s-1960s

RECORD LINK

<https://kress.nga.gov/Detail/objects/2855>