

Domenico di Michelino, 1417-1491
Saint Jerome, Penitent



KRESS CATALOGUE NUMBER

K159

IDENTIFIER

2898

ARTIST

Domenico di Michelino, 1417-1491

NATIONALITY

Italian

DATE

c. 1460

MEDIUM

tempera on panel

TYPE OF OBJECT

Painting

DIMENSIONS

134.6 x 57.2 cm (53 x 22-1/2 in)

LOCATION

Dallas Museum of Art, Dallas, Texas

PROVENANCE

(Federico Pedulli, Florence). (Count Alessandro Contini Bonacossi [1878-1955] Rome-Florence); sold to Samuel H. Kress [1863-1955] on 17 July 1931; gift to the Dallas Museum of Art in 1933, no. 1933.2.

ACCESSION NUMBER

1933.2

KRESS NUMBER

159

LEGACY KRESS NUMBER

7489

2 ACQUISITIONS

Contini Bonacossi, Alessandro, July 17, 1931

Contini Bonacossi, Alessandro, June 13, 1932

EXTERNAL LINKS

Related Collection Record

<https://collections.dma.org/artwork/5015088>

Related National Gallery of Art Library Image Collections Record

https://library.nga.gov/permalink/01NGA_INST/1p5jkvq/alma991106103804896

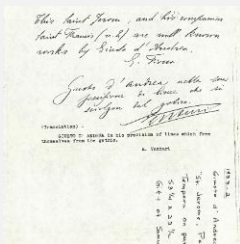
11 ARCHIVAL ITEMS



K0159 - Expert opinion by Perkins, circa 1920s-1940s



K0158 - Expert opinion by Perkins, circa 1920s-1940s

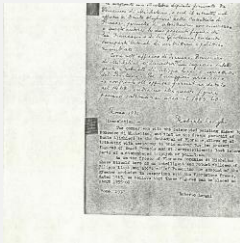


K0159 - Expert opinion by Fiocco et al., circa 1930s-1940s

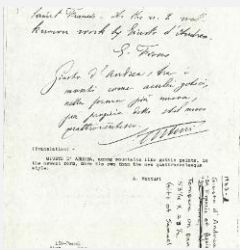
KRESS COLLECTION DIGITAL ARCHIVE



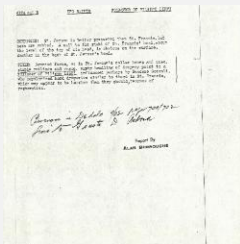
K0159 - Photograph, circa 1930s-1960s



K0158 - Expert opinion by Longhi, 1932



K0158 - Expert opinion by Fiocco et al., circa 1930s-1940s

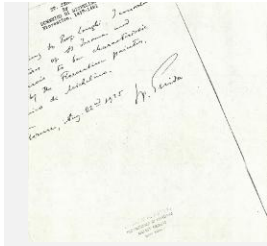


K0158 - Alan Burroughs report, circa 1930s-1940s

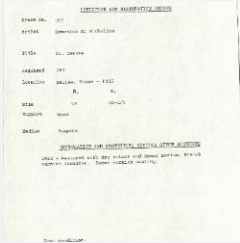


K0158 - Photograph, circa 1930s-1960s

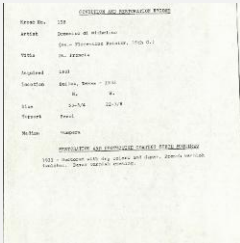
KRESS COLLECTION DIGITAL ARCHIVE



K0159 - Expert opinion by Suida, 1935



K0159 - Condition and restoration record, circa 1950s-1960s



K0158 - Condition and restoration record, circa 1950s-1960s

RECORD LINK

<https://kress.nga.gov/Detail/objects/2898>