

Attributed to Giovanni Bellini
Bearded Man, A



KRESS CATALOGUE NUMBER

K1710

IDENTIFIER

2975

ARTIST

Bellini, Giovanni, c. 1430/1435-1516

NATIONALITY

Italian

DATE

c. 1485

MEDIUM

tempera on panel

TYPE OF OBJECT

Painting

DIMENSIONS

13.7 x 10.8 cm (5-3/8 x 4-1/4 in)

LOCATION

Philbrook Museum of Art, Tulsa, Oklahoma

PROVENANCE

Busca Serbelloni Family, Milan; Countess Sola, née Busca; her son Count Pier Luigi Sola, Milan; acquired 1930 in Paris through (Hugo Rose) by (Jacques Seligmann and Co., New York), as by Antonella da Messina; sold to the Samuel H. Kress Foundation on 10 May 1950, as by Bellini; gift 1961 to Philbrook Museum of Art, Tulsa, no. 1961.9.29. [1] See Jacques Seligmann Papers, Archives of American Art, Box 85, folder 13 and Box 283, folder 1. In New York by 1938.

ACCESSION NUMBER

1961.9.29

KRESS NUMBER

1710

1 ACQUISITION

Jacques Seligmann & Co., May 10, 1950

1 DISTRIBUTION

Gift to Philbrook Museum of Art, December 09, 1961

EXTERNAL LINKS

Related Collection Record

<http://philbrook.emuseum.com/objects/3625>

Related National Gallery of Art Library Image Collections Record

https://library.nga.gov/permalink/01NGA_INST/1p5jkvq/alma99103173804896

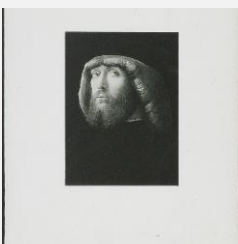
5 ARCHIVAL ITEMS



K1710 - Expert opinion by Valentiner, circa 1930s-1950s

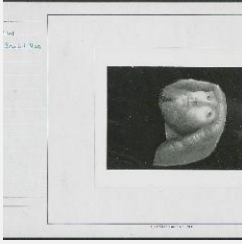


K1710 - Photograph, circa 1930s-1960s

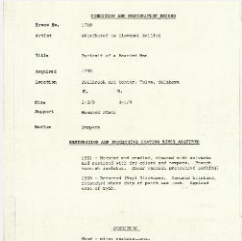


K1710 - Photograph, circa 1930s-1960s

KRESS COLLECTION DIGITAL ARCHIVE



K1710 - National Gallery of Art mounted photograph, circa 1940s-1950s



K1710 - Condition and restoration record, circa 1950s-1960s

RECORD LINK

<https://kress.nga.gov/Detail/objects/2975>