

**Master of San Martino Alla Palma, active 1325-1350**  
***The Flagellation***



**KRESS CATALOGUE NUMBER**

K197

**IDENTIFIER**

3184

**ARTIST**

Master of San Martino Alla Palma, active 1325-1350

**NATIONALITY**

Italian

**DATE**

c. 1330

**MEDIUM**

tempera on panel

**TYPE OF OBJECT**

Painting

**DIMENSIONS**

29.2 x 22 cm (11-1/2 x 8-5/8 in)

**LOCATION**

Doris Ulmann Galleries, Berea College, Berea, KY

**HISTORICAL ATTRIBUTION**

Daddi, Bernardo, active by 1320, died probably 1348

**PROVENANCE**

Fejer de Buck, Rome. [1] (Count Alessandro Contini Bonacossi [1878-1955] Rome-Florence); sold to Samuel H. Kress [1863-1955] on 1 June 1936 as Antoniazzo Romano; gift to the National Gallery of Art; deaccessioned 1952 and returned to the Samuel H. Kress Foundation; gift 1961 to Doris Ulmann Galleries, Berea College, no. 140.9. No information has been located about Fejer de Buck, from whom Contini-Bonacossi acquired two other paintings later sold to Kress (K534, now North Carolina Museum of Art and

# KRESS COLLECTION DIGITAL ARCHIVE

K306, now National Gallery of Art).

## ACCESSION NUMBER

140.9

## KRESS NUMBER

197

## PICHETTO NUMBER

7617

## LEGACY NGA NUMBER

195

---

## 2 ACQUISITIONS

Contini Bonacossi, Alessandro, March 4, 1932 [1]

Contini Bonacossi, Alessandro, June 27, 1934

---

## 3 DISTRIBUTIONS

Gift to National Gallery of Art, June 29, 1939

Deaccession by National Gallery of Art, October 15, 1952

Gift to Doris Ulmann Galleries, Berea College, December 09, 1961

---

## EXTERNAL LINKS

### Related National Gallery of Art Library Image Collections Record

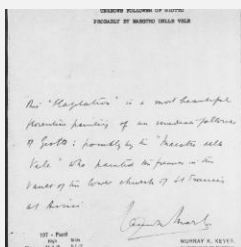
[https://library.nga.gov/permalink/01NGA\\_INST/1p5jkvq/alma991106553804896](https://library.nga.gov/permalink/01NGA_INST/1p5jkvq/alma991106553804896)

---

## 12 ARCHIVAL ITEMS



K0197 - Expert opinion by Berenson, circa 1920s-1950s

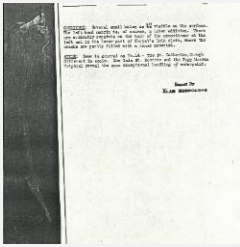


K0197 - Expert opinion by Marle, circa 1920s-1930s

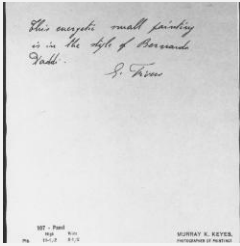
# KRESS COLLECTION DIGITAL ARCHIVE



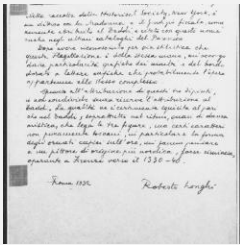
K0197 - Expert opinion by Perkins, circa 1920s-1940s



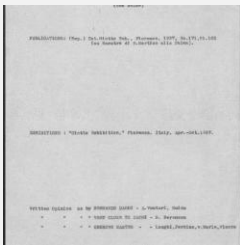
K0197 - Alan Burroughs report, circa 1930s-1940s



K0197 - Expert opinion by Fiocco, circa 1930s-1940s

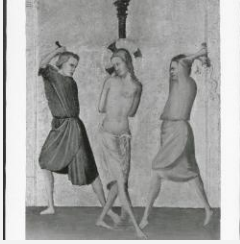


K0197 - Expert opinion by Longhi, 1932

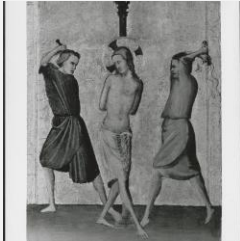


K0197 - Art object record, circa 1930s-1950s

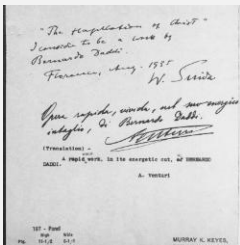
# KRESS COLLECTION DIGITAL ARCHIVE



K0197 - Photograph, circa 1930s-1960s



K0197 - Photograph, circa 1930s-1960s



K0197 - Expert opinion by Suida et al., 1935



K0197 - National Gallery of Art mounted photograph, circa 1940s-1950s



K0197 - Condition and restoration record, circa 1950s-1960s

## RECORD LINK

<https://kress.nga.gov/Detail/objects/3184>