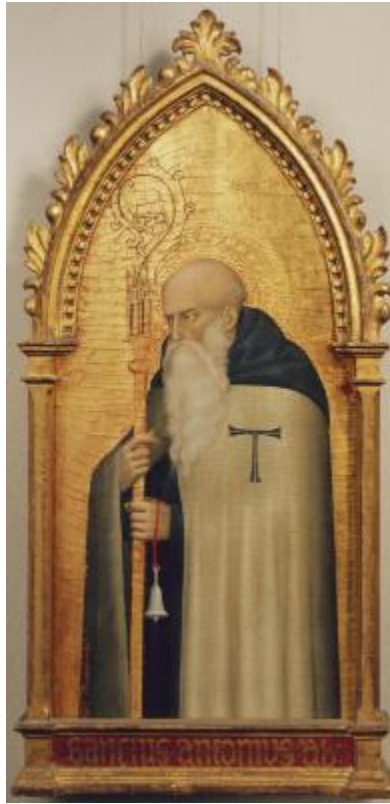


Giovanni da Milano, active 1346-1369
Saint Anthony Abbot



KRESS CATALOGUE NUMBER

K199

IDENTIFIER

3196

ARTIST

Giovanni da Milano, active 1346-1369

NATIONALITY

Italian

DATE

c. 1365

MEDIUM

tempera on panel

TYPE OF OBJECT

Painting

DIMENSIONS

71.8 x 35 cm (28-1/4 x 13-3/4 in)

LOCATION

Williams College Museum of Art, Williamstown, Massachusetts

PROVENANCE

N. Bianco, Turin; (his sale, Giulio Sambon, Milan, 25-26 November 1889, no. 61, as Francesco Traini). Vienna Collection, Rome. (Count Alessandro Contini Bonacossi [1878-1955 Florence-Rome]); sold to Samuel H. Kress [1863-1955] on 4 March 1932; gift 1939 to the National Gallery of Art; deaccessioned 1952 and returned to the Samuel H. Kress Foundation; gift to Williams College Museum of Art in 1960, no. 60.12.

ACCESSION NUMBER

KRESS COLLECTION DIGITAL ARCHIVE

60.12

KRESS NUMBER

199

LEGACY NGA NUMBER

197

1 ACQUISITION

Contini Bonacossi, Alessandro, March 4, 1932 [1]

3 DISTRIBUTIONS

Gift to National Gallery of Art, June 29, 1939

Deaccession by National Gallery of Art, October 15, 1952

Gift to Williams College Museum of Art, December 09, 1961

EXTERNAL LINKS

Related Collection Record

<http://egallery.williams.edu/objects/4389>

Related National Gallery of Art Library Image Collections Record

https://library.nga.gov/permalink/01NGA_INST/1p5jkvq/alma991093443804896

11 ARCHIVAL ITEMS

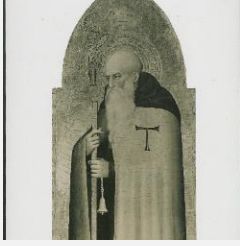


K0199 - Expert opinion by Berenson, circa 1920s-1950s

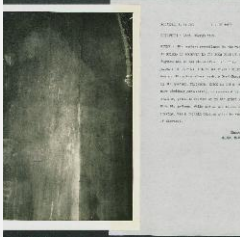


K0199 - Expert opinion by Marle, circa 1920s-1930s

KRESS COLLECTION DIGITAL ARCHIVE



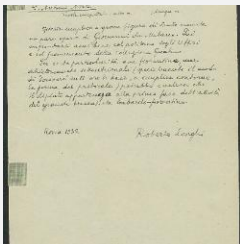
K0199 - Expert opinion by Perkins et al., circa 1920s-1940s



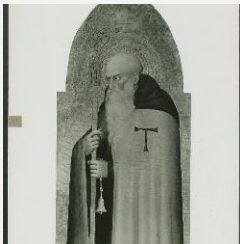
K0199 - Alan Burroughs report, circa 1930s-1940s



K0199 - Expert opinion by Fiocco, circa 1930s-1940s

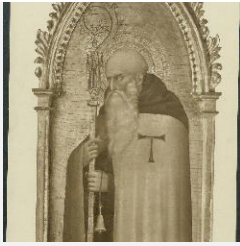


K0199 - Expert opinion by Longhi, 1932



K0199 - Art object record, circa 1930s-1950s

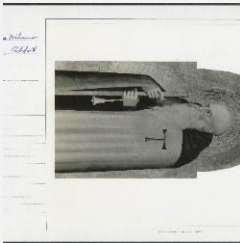
KRESS COLLECTION DIGITAL ARCHIVE



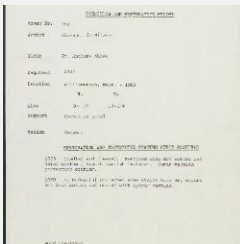
K0199 - Photograph, circa 1930s-1960s



K0199 - Expert opinion by Suida, 1935



K0199 - National Gallery of Art mounted photograph, circa 1940s-1950s



K0199 - Condition and restoration record, circa 1950s-1960s

RECORD LINK

<https://kress.nga.gov/Detail/objects/3196>