

Paolo Schiavo, 1397-1478  
*Flagellation*



**KRESS CATALOGUE NUMBER**

K216

**IDENTIFIER**

3326

**ARTIST**

Schiavo, Paolo, 1397-1478

**NATIONALITY**

Italian

**DATE**

1430-40

**MEDIUM**

oil on panel

**TYPE OF OBJECT**

Painting

**DIMENSIONS**

33 x 26.7 cm (13 x 10-1/2 in)

**LOCATION**

Museo de Arte de Ponce, Ponce, Puerto Rico

**PROVENANCE**

Achillito Chiesa, Milan. [1] (Count Alessandro Contini Bonacossi [1878-1955] Rome-Florence); sold to Samuel H. Kress [1863-1955] on 4 March 1932; gift to the National Gallery of Art in 1939; deaccessioned in 1952 and returned to the Samuel H. Kress Foundation; gift to Museo de Arte de Ponce in 1964, no. 64.0271. [1] Not included in any of the Chiesa sales held between 1925-1927 at the American Art Association in New York

**ACCESSION NUMBER**

# KRESS COLLECTION DIGITAL ARCHIVE

64.0271

## KRESS NUMBER

216

## PICHETTO NUMBER

7703

## LEGACY NGA NUMBER

214

---

### 1 ACQUISITION

Contini Bonacossi, Alessandro, March 4, 1932 [2]

---

### 2 DISTRIBUTIONS

Gift to National Gallery of Art, June 29, 1939

Deaccession by National Gallery of Art, October 15, 1952

---

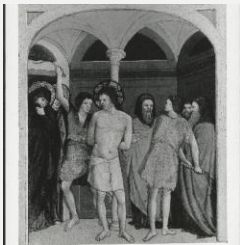
### EXTERNAL LINKS

#### Related National Gallery of Art Library Image Collections Record

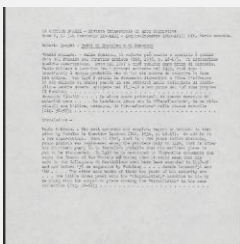
[https://library.nga.gov/permalink/01NGA\\_INST/1p5jkvq/alma991093113804896](https://library.nga.gov/permalink/01NGA_INST/1p5jkvq/alma991093113804896)

---

### 11 ARCHIVAL ITEMS



K0216 - Expert opinion by Berenson, circa 1920s-1950s



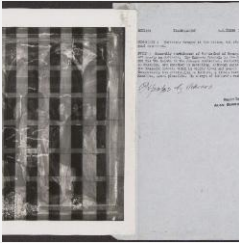
K0216 - Expert opinion by Longhi, circa 1920s-1950s



K0216 - Expert opinion by Marle, circa 1920s-1930s



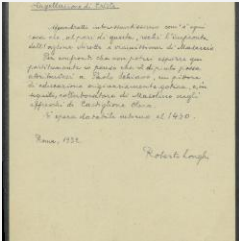
K0216 - Expert opinion by Perkins, circa 1920s-1940s



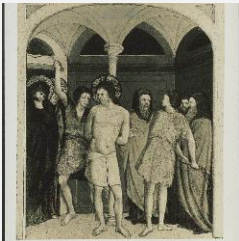
K0216 - Alan Burroughs report, circa 1930s-1940s



K0216 - Expert opinion by Fiocco et al., circa 1930s-1940s



K0216 - Expert opinion by Longhi, 1932



K0216 - Art object record, circa 1930s-1950s

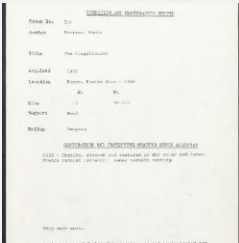
# KRESS COLLECTION DIGITAL ARCHIVE



K0216 - Photograph, circa 1930s-1960s



K0216 - Expert opinion by Suida, 1935



K0216 - Condition and restoration record, circa 1950s-1960s

---

## RECORD LINK

<https://kress.nga.gov/Detail/objects/3326>