

Andrea di Giusto, active 1427-1447, died 1451
The Assumption of the Virgin with Saint Jerome and Saint Francis



KRESS CATALOGUE NUMBER

K234

IDENTIFIER

3362

ARTIST

Andrea di Giusto, active 1427-1447, died 1451

NATIONALITY

Italian

DATE

c. 1423

MEDIUM

tempera on lindenwood panel

TYPE OF OBJECT

Painting

DIMENSIONS

54.3 x 54.3 cm (21-3/8 x 21-3/8 in)

LOCATION

Philbrook Museum of Art, Tulsa, Oklahoma

HISTORICAL ATTRIBUTION

Andrea di Lione, 1610-1685

KRESS COLLECTION DIGITAL ARCHIVE

PROVENANCE

Agnolo Gaddi di Zanobi, Florence Italy, c. 1424. [1] (Partini, Rome). (Count Alessandro Contini Bonacossi [1878-1955], Florence); sold to Samuel H. Kress [1863-1955] on 29 July 1932; gift 1939 to the National Gallery of Art; deaccessioned in 1952 and returned to the Samuel H. Kress Foundation; gift 1961 to Philbrook Museum of Art, Tulsa, no. 1961.9.9. [1] The Gaddi coat-of-arms is visible at bottom; the panel was probably painted for Agnolo before his marriage, 1424-1425.

ACCESSION NUMBER

1961.9.9

KRESS NUMBER

234

PICHETTO NUMBER

7811

LEGACY NGA NUMBER

223

1 ACQUISITION

Contini Bonacossi, Alessandro, July 29, 1932

4 DISTRIBUTIONS

Gift to National Gallery of Art, June 29, 1939

Transfer to auxiliary collection by National Gallery of Art, March 31, 1943

Deaccession by National Gallery of Art, October 15, 1952

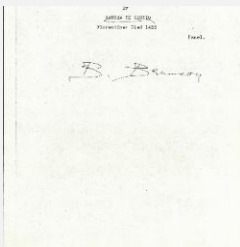
Gift to Philbrook Museum of Art, December 09, 1961

EXTERNAL LINKS

Related National Gallery of Art Library Image Collections Record

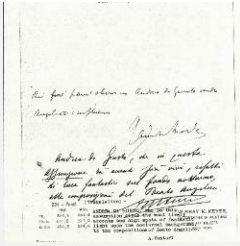
https://library.nga.gov/permalink/01NGA_INST/1p5jkvq/alma991091793804896

12 ARCHIVAL ITEMS

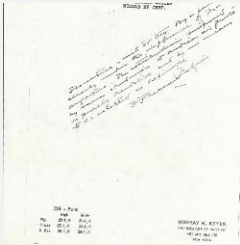


K0234 - Expert opinion by Berenson, circa 1920s-1950s

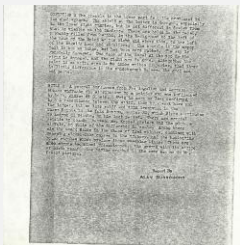
KRESS COLLECTION DIGITAL ARCHIVE



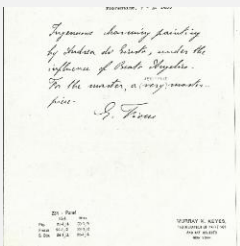
K0234 - Expert opinion by Marle et al., circa 1920s-1930s



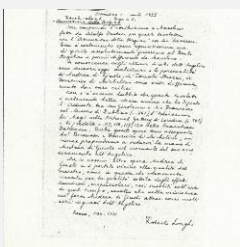
K0234 - Expert opinion by Perkins, circa 1920s-1940s



K0234 - Alan Burroughs report, circa 1930s-1940s

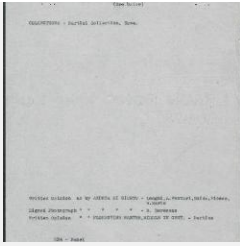


K0234 - Expert opinion by Fiocco, circa 1930s-1940s



K0234 - Expert opinion by Longhi, 1932

KRESS COLLECTION DIGITAL ARCHIVE



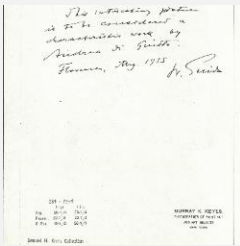
K0234 - Art object record, circa 1930s-1950s



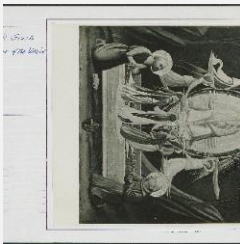
K0234 - Photograph, circa 1930s-1960s



K0234 - Photograph, circa 1930s-1960s

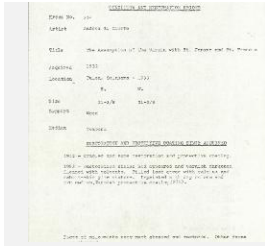


K0234 - Expert opinion by Suida, 1935



K0234 - National Gallery of Art mounted photograph, circa 1940s-1950s

KRESS COLLECTION DIGITAL ARCHIVE



K0234 - Condition and restoration record, circa 1950s-1960s

RECORD LINK

<https://kress.nga.gov/Detail/objects/3362>