

**Vittore Carpaccio, c. 1460-1525/1526**  
***Madonna and Child with Saints***



**KRESS CATALOGUE NUMBER**

K245

**IDENTIFIER**

3366

**ARTIST**

Carpaccio, Vittore, c. 1460-1525/1526

**NATIONALITY**

Italian

**DATE**

c. 1515

**MEDIUM**

oil on panel

**TYPE OF OBJECT**

Painting

**DIMENSIONS**

49.1 x 78.6 cm (19-1/4 x 30-7/8 in)

**LOCATION**

University of Arizona Museum of Art, Tucson, Arizona

**PROVENANCE**

Baron Suardi, Bergamo. (Count Alessandro Contini Bonacossi [1878-1955] Rome-Florence); sold to Samuel H. Kress [1863-1955] on 23 June 1933; gift to the National Gallery of Art in 1939; deaccessioned in 1952 and returned to the Samuel H. Kress Foundation; gift to University of Arizona Museum of Art, no. 1961.013.003.

**ACCESSION NUMBER**

1961.013.003

**KRESS NUMBER**

245

**LEGACY NGA NUMBER**

227

# KRESS COLLECTION DIGITAL ARCHIVE

## 1 ACQUISITION

Contini Bonacossi, Alessandro, June 23, 1933 [1]

---

## 3 DISTRIBUTIONS

Gift to National Gallery of Art, June 29, 1939

Deaccession by National Gallery of Art, October 15, 1952

Gift to University of Arizona Museum of Art, December 09, 1961

---

## EXTERNAL LINKS

### Related Collection Record

<https://u.arizona.pastperfectonline.com/webobject/2337BE84-C243-49BF-A134-316246087159>

### Related National Gallery of Art Library Image Collections Record

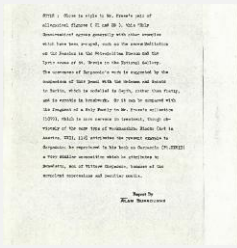
[https://library.nga.gov/permalink/01NGA\\_INST/1p5jvkq/alma99151323804896](https://library.nga.gov/permalink/01NGA_INST/1p5jvkq/alma99151323804896)

---

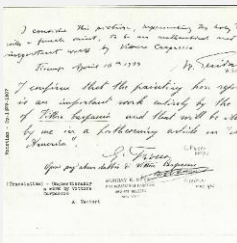
## 11 ARCHIVAL ITEMS



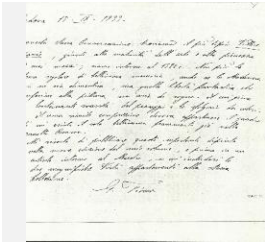
K0245 - Expert opinion by Berenson, circa 1920s-1950s



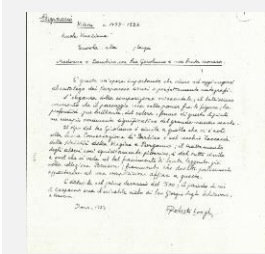
K0245 - Alan Burroughs report, circa 1930s-1940s



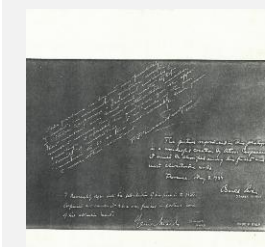
K0245 - Expert opinion by Fiocco et al., 1934



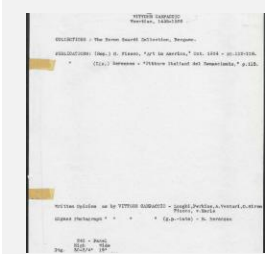
K0245 - Expert opinion by Fiocco, 1933



K0245 - Expert opinion by Longhi, 1933



K0245 - Expert opinion by Perkins et al., 1934



K0245 - Art object record, circa 1930s-1950s



K0245 - Photograph, circa 1930s-1960s

# KRESS COLLECTION DIGITAL ARCHIVE



K0245 - Photograph, circa 1930s-1960s



K0245 - National Gallery of Art mounted photograph, circa 1940s-1950s



K0245 - Condition and restoration record, circa 1950s-1960s

## RECORD LINK

<https://kress.nga.gov/Detail/objects/3366>