

Bernardino Fungai, 1460-1516
Saint Lucy Lead to her Martyrdom



KRESS CATALOGUE NUMBER

K248

IDENTIFIER

3367

ARTIST

Fungai, Bernardino, 1460-1516

NATIONALITY

Italian

DATE

c. 1490

MEDIUM

tempera on panel

TYPE OF OBJECT

Painting

DIMENSIONS

40.6 x 60.3 cm (16 x 23-3/4 in)

LOCATION

New Orleans Museum of Art, New Orleans, Louisiana

PROVENANCE

Sir Francis Ewan, London. (Count Alessandro Contini Bonacossi [1878-1955] Rome-Florence); sold to Samuel H. Kress [1863-1955] on 23 June 1933; gift to the National Gallery of Art in 1939; deaccessioned in 1952 and returned to the Samuel H. Kress Foundation; gift to New Orleans Museum of Art in 1961, no. 61.68.

ACCESSION NUMBER

61.68

KRESS NUMBER

248

LEGACY NGA NUMBER

230

KRESS COLLECTION DIGITAL ARCHIVE

1 ACQUISITION

Contini Bonacossi, Alessandro, June 23, 1933 [1]

3 DISTRIBUTIONS

Gift to National Gallery of Art, June 29, 1939

Deaccession by National Gallery of Art, October 15, 1952

Gift to New Orleans Museum of Art, December 09, 1961

EXTERNAL LINKS

Related Collection Record

<https://noma.org/collection/st-lucy-lead-to-her-martyrdom/>

Related National Gallery of Art Library Image Collections Record

https://library.nga.gov/permalink/01NGA_INST/1p5jkvq/alma991594443804896

12 ARCHIVAL ITEMS



K0248 - Expert opinion by Berenson, circa 1920s-1950s

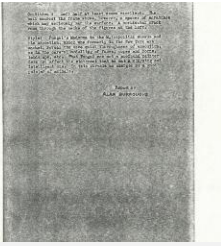


K0248 - Expert opinion by Marle, circa 1920s-1930s



K0248 - Expert opinion by Perkins et al., circa 1920s-1940s

KRESS COLLECTION DIGITAL ARCHIVE



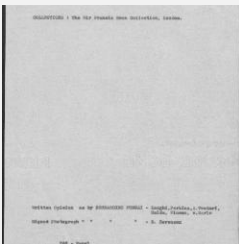
K0248 - Alan Burroughs report, circa 1930s-1940s



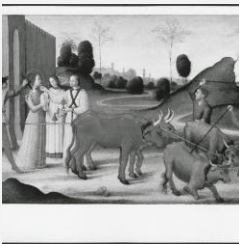
K0248 - Expert opinion by Fiocco, circa 1930s-1940s



K0248 - Expert opinion by Longhi, 1933

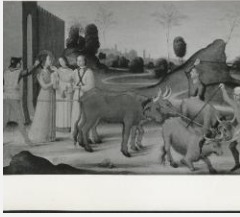


K0248 - Art object record, circa 1930s-1950s



K0248 - Photograph, circa 1930s-1960s

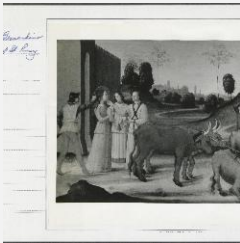
KRESS COLLECTION DIGITAL ARCHIVE



K0248 - Photograph, circa 1930s-1960s



K0248 - Expert opinion by Suida, 1935



K0248 - National Gallery of Art mounted photograph, circa 1940s-1950s



K0248 - Condition and restoration record, circa 1950s-1960s

RECORD LINK

<https://kress.nga.gov/Detail/objects/3367>