

**Benozzo Gozzoli, c. 1421-1497**  
***Madonna and Child with Angels***



**KRESS CATALOGUE NUMBER**

K250

**IDENTIFIER**

3369

**ARTIST**

Gozzoli, Benozzo, c. 1421-1497

**NATIONALITY**

Italian

**DATE**

mid-15th century

**MEDIUM**

tempera and gilding on panel

**TYPE OF OBJECT**

Painting

**DIMENSIONS**

80 x 48.9 cm (31-1/2 x 19-1/4 in)

**LOCATION**

Honolulu Museum of Art, Honolulu, Hawaii

**PROVENANCE**

Lady Brown, Florence, Italy and Surrey, England. (Count Alessandro Contini Bonacossi [1878-1955] Rome-Florence); sold to Samuel H. Kress [1863-1955] on 23 June 1933; gift 1939 to the National Gallery of Art; deaccessioned in 1952 and returned to the Samuel H. Kress Foundation; gift to Honolulu Academy of Arts (now Honolulu Museum of Art) in 1961, no. 2978.1.

# KRESS COLLECTION DIGITAL ARCHIVE

## ACCESSION NUMBER

2978.1

## KRESS NUMBER

250

## LEGACY NGA NUMBER

232

---

## 1 ACQUISITION

Contini Bonacossi, Alessandro, June 23, 1933 [1]

---

## 3 DISTRIBUTIONS

Gift to National Gallery of Art, June 29, 1939

Deaccession by National Gallery of Art, February 21, 1952

Gift to Honolulu Academy of Arts, December 09, 1961

---

## EXTERNAL LINKS

### Related Collection Record

<https://art.honolulumuseum.org/objects/35160>

### Related National Gallery of Art Library Image Collections Record

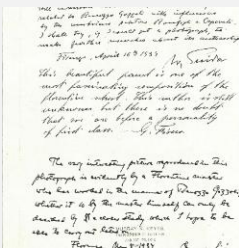
[https://library.nga.gov/permalink/01NGA\\_INST/1p5jvkq/alma991093653804896](https://library.nga.gov/permalink/01NGA_INST/1p5jvkq/alma991093653804896)

---

## 9 ARCHIVAL ITEMS

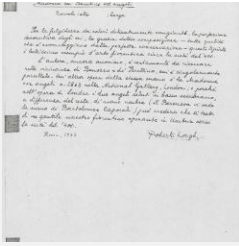


K0250 - Expert opinion by Berenson, circa 1920s-1950s

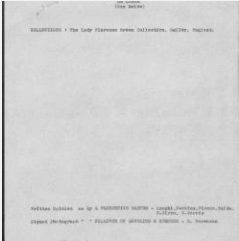


K0250 - Expert opinion by Fiocco et al., 1934

# KRESS COLLECTION DIGITAL ARCHIVE



K0250 - Expert opinion by Longhi, 1933



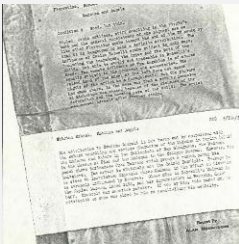
K0250 - Art object record, circa 1930s-1950s



K0250 - Photograph, circa 1930s-1960s



K0250 - Photograph, circa 1930s-1960s



K0250 - Alan Burroughs report, 1935

# KRESS COLLECTION DIGITAL ARCHIVE



K0250 - National Gallery of Art mounted photograph, circa 1940s-1950s



K0250 - Condition and restoration record, circa 1950s-1960s

---

## RECORD LINK

<https://kress.nga.gov/Detail/objects/3369>