

Segna di Buonaventura, active 1298-died 1326/1331
Madonna and Child



KRESS CATALOGUE NUMBER

K3

IDENTIFIER

3403

ARTIST

Segna di Buonaventura, active 1298-died 1326/1331

NATIONALITY

Italian

DATE

early 14th century

MEDIUM

tempera and gilding on panel

TYPE OF OBJECT

Painting

DIMENSIONS

76.2 x 52.5 cm (19-3/4 x 19-1/2 in)

LOCATION

Honolulu Museum of Art, Honolulu, Hawaii

PROVENANCE

(D' Atri, Paris and Rome). Guglielmo Galli; [1] (Count Alessandro Contini Bonacossi [1878-1955], Rome-Florence); sold to Samuel H. Kress [1863-1955] on 17 March 1927 as Segna di Bonaventura; gift 1939 to the National Gallery of Art as Ugolino da Siena; deaccessioned in March 1952 and returned to the Samuel H. Kress Foundation; gift to Honolulu Academy of Arts (now Honolulu Museum of Art) in 1961, no. 2977.1. [1] According to a note on the Contini Bill of Sale, Samuel H. Kress Foundation Archive, New York.

KRESS COLLECTION DIGITAL ARCHIVE

ACCESSION NUMBER

2977.1

KRESS NUMBER

3

LEGACY NGA NUMBER

115

1 ACQUISITION

Contini Bonacossi, Alessandro, March 17, 1927

3 DISTRIBUTIONS

Gift to National Gallery of Art, June 29, 1939

Deaccession by National Gallery of Art, February 21, 1952

Gift to Honolulu Academy of Arts, December 09, 1961

EXTERNAL LINKS

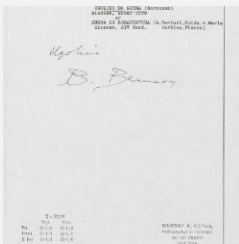
Related Collection Record

<https://art.honolulumuseum.org/objects/35159>

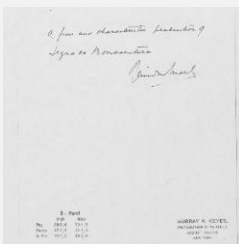
Related National Gallery of Art Library Image Collections Record

https://library.nga.gov/permalink/01NGA_INST/1p5jvkq/alma991102363804896

12 ARCHIVAL ITEMS



K0003 - Expert opinion by Berenson, circa 1920s-1950s



K0003 - Expert opinion by Marle, circa 1920s-1930s

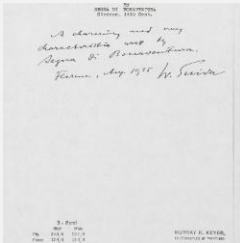
KRESS COLLECTION DIGITAL ARCHIVE



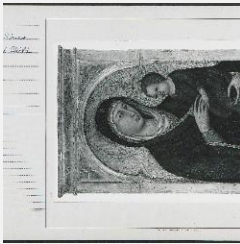
K0003 - Photograph, circa 1930s-1960s



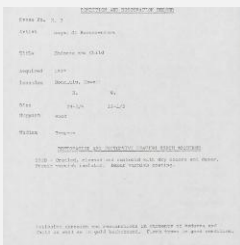
K0003 - Photograph, circa 1930s-1960s



K0003 - Expert opinion by Suida, 1935



K0003 - National Gallery of Art mounted photograph, circa 1940s-1950s



K0003 - Condition and restoration record, circa 1950s-1960s

RECORD LINK

<https://kress.nga.gov/Detail/objects/3403>