

Giovanni dal Ponte, 1385-c. 1437
Virgin and Child Enthroned with the Archangel Michael, and Saints Lawrence, Stephen, George



KRESS CATALOGUE NUMBER

K300

IDENTIFIER

3404

ARTIST

Giovanni dal Ponte, 1385-c. 1437

NATIONALITY

Italian

DATE

c. 1425-26

MEDIUM

tempera on lindenwood panel

TYPE OF OBJECT

Painting

DIMENSIONS

92.7 x 58.4 cm (36-1/2 x 23 in); sides: 71.1 x 35.2 cm (28 x 13-7/8 in)

LOCATION

Columbia Museum of Art, Columbia, South Carolina

PROVENANCE

Pio Fabbri, Rome, as early as 1906 and still in 1912. [1] (Count Alessandro Contini Bonacossi [1878-1955] Rome-Florence); sold to Samuel H. Kress [1863-1955] on 27 December 1933; gift to the National Gallery of Art in 1939; deaccessioned 1952 and returned to the Samuel H. Kress Foundation; gift to Columbia Museum of Art in 1961, no. CMA 1954.23. [1] First published by C. Gamba in *Rivista d'Arte*, vol. IV, 1906, p. 164; exhibited at *Mostra Retrospettiva*, Castel Sant'Angelo, Rome, 1912.

ACCESSION NUMBER

CMA 1954.23

KRESS NUMBER

300

PICHETTO NUMBER

8126

LEGACY NGA NUMBER

265

2 ACQUISITIONS

Contini Bonacossi, Alessandro, December 27, 1933 [1]

Contini Bonacossi, Alessandro, December 27, 1934

KRESS COLLECTION DIGITAL ARCHIVE

3 DISTRIBUTIONS

Gift to National Gallery of Art, June 29, 1939

Deaccession by National Gallery of Art, October 15, 1952

Gift to Columbia Museum of Art, December 09, 1961

EXTERNAL LINKS

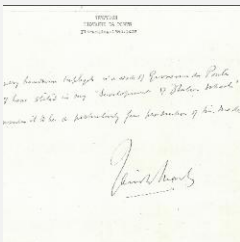
Related National Gallery of Art Library Image Collections Record

https://library.nga.gov/permalink/01NGA_INST/1p5jkvq/alma99410853804896

13 ARCHIVAL ITEMS



K0300 - Expert opinion by Berenson, circa 1920s-1950s



K0300 - Expert opinion by Marle, circa 1920s-1930s

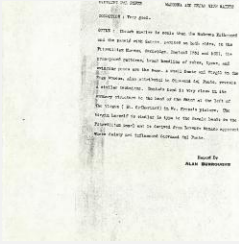


K0300 - Expert opinion by Perkins, circa 1920s-1940s

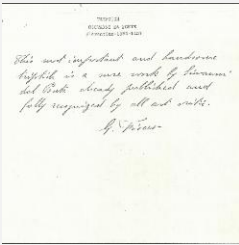


K0300 - Expert opinion by A. Venturi, circa 1920s-1930s

KRESS COLLECTION DIGITAL ARCHIVE



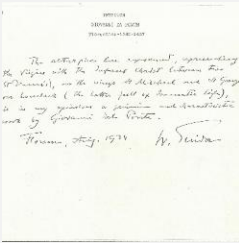
K0300 - Alan Burroughs report, circa 1930s-1940s



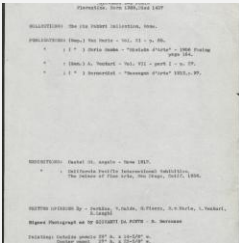
K0300 - Expert opinion by Fiocco, circa 1930s-1940s



K0300 - Expert opinion by Longhi, 1934



K0300 - Expert opinion by Suida, 1934



K0300 - Art object record, circa 1930s-1950s

KRESS COLLECTION DIGITAL ARCHIVE



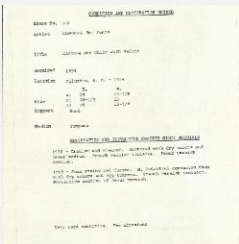
K0300 - Photograph, circa 1930s-1960s



K0300 - Photograph, circa 1930s-1960s



K0300 - National Gallery of Art mounted photograph, circa 1940s-1950s



K0300 - Condition and restoration record, circa 1950s-1960s

RECORD LINK

<https://kress.nga.gov/Detail/objects/3404>