

Antoniazzo Romano, active c. 1461-1508/1509
The Crucifixion with Saint Francis



KRESS CATALOGUE NUMBER

K318

IDENTIFIER

3415

ARTIST

Antoniazzo Romano, active c. 1461-1508/1509

NATIONALITY

Italian

DATE

1475-80

MEDIUM

tempera and gilding on panel

TYPE OF OBJECT

Painting

DIMENSIONS

51.4 x 38.4 cm (20-1/4 x 15-1/8 in)

LOCATION

Samek Art Museum Bucknell University, Lewisburg, Pennsylvania

PROVENANCE

(Palumbo, Rome). (Count Alessandro Contini Bonacossi [1878-1955], Rome; Florence); sold to Samuel H. Kress [1863-1955] on 12 June 1935; gift to the National Gallery of Art in 1939; deaccessioned in 1952 and returned to the Samuel H. Kress Foundation; gift to the Samek Art Museum Bucknell University in 1961, no. BL-K16.

KRESS COLLECTION DIGITAL ARCHIVE

ACCESSION NUMBER

1961.K.318

KRESS NUMBER

318

PICHETTO NUMBER

8617

LEGACY NGA NUMBER

280

1 ACQUISITION

Contini Bonacossi, Alessandro, June 12, 1935

3 DISTRIBUTIONS

Gift to National Gallery of Art, June 29, 1939

Deaccession by National Gallery of Art, October 15, 1952

Gift to Samek Art Museum Bucknell University, December 09, 1961

EXTERNAL LINKS

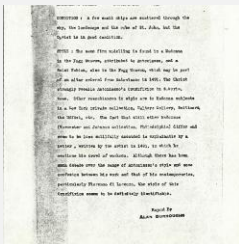
Related National Gallery of Art Library Image Collections Record

https://library.nga.gov/permalink/01NGA_INST/1p5jvkq/alma991612573804896

9 ARCHIVAL ITEMS

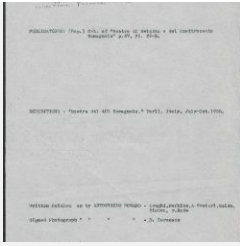


K0318 - Expert opinion by Berenson, circa 1920s-1950s



K0318 - Alan Burroughs report, circa 1930s-1940s

KRESS COLLECTION DIGITAL ARCHIVE



K0318 - Art object record, circa 1930s-1950s



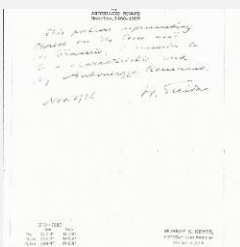
K0318 - Photograph, circa 1930s-1960s



K0318 - Expert opinion by Fiocco, 1936

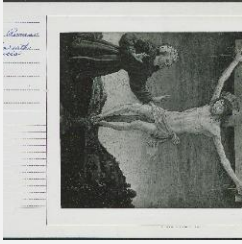


K0318 - Expert opinion by Longhi et al., 1935



K0318 - Expert opinion by Suida, 1936

KRESS COLLECTION DIGITAL ARCHIVE



K0318 - National Gallery of Art mounted photograph, circa 1940s-1950s



K0318 - Condition and restoration record, circa 1950s-1960s

RECORD LINK

<https://kress.nga.gov/Detail/objects/3415>