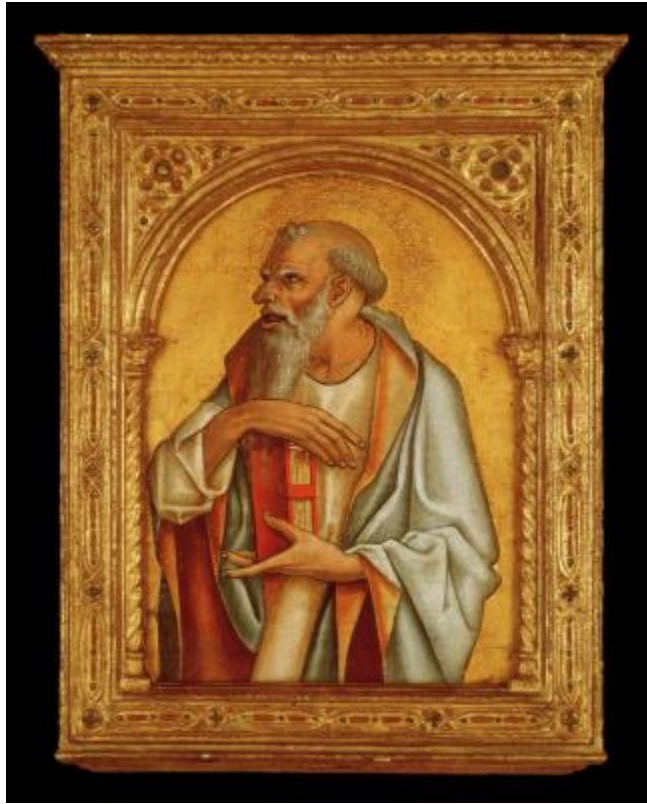


Carlo Crivelli, c. 1430/1435-1495
An Apostle



KRESS CATALOGUE NUMBER

K336A

IDENTIFIER

3429

ARTIST

Crivelli, Carlo, c. 1430/1435-1495

NATIONALITY

Italian

DATE

c. 1470-75

MEDIUM

tempera on panel

TYPE OF OBJECT

Painting

DIMENSIONS

31.3 x 23 cm (12-1/4 x 9 in)

LOCATION

Honolulu Museum of Art, Honolulu, Hawaii

PROVENANCE

San Francesco Montefiore dell'Aso, Italy. (Pietro Vallati, Rome) by 1858. [1] Lt. Col. Hubert Cornwall Legh [1858-1926], High Legh Hall, Knutsford, Cheshire, by 1913; acquired 1913 by (Robert Langton Douglas [1864-1951], London) possibly buying for (P. & D. Colnaghi); [2] sold half share to (M. Knoedler & Co., London and New York) on 17 February 1913; [3] (Count Alessandro Contini Bonacossi [1878-1955] Rome-Florence); sold to Samuel H. Kress [1863-1955] on 10 July 1935; gift to Honolulu Academy of Arts (now Honolulu Museum of Art) in 1961, n. 2979.1. [1] The painting is recorded in Otto Mündler, "The Travel Diaries of Otto Mündler" ed. Carol Togneri, Walpole Society, 51 (1985): 79v. [2] Colnaghi's and Knoedler's shares in individual panels changed over this period, and this painting was probably owned entirely by Colnaghi's at time of sale. Colnaghi's no. A 1239 (with companion; formerly no. A 299 or A 300, when in series of eight). [3] According to M. Knoedler and Co. Records, Getty Research Center, call number

KRESS COLLECTION DIGITAL ARCHIVE

2102.M.54, Series I, Box 6, Knoedler's stock no. 13143 (series of eight).

ACCESSION NUMBER

2979.1

KRESS NUMBER

336A

PICHETTO NUMBER

8703B

1 ACQUISITION

Contini Bonacossi, Alessandro, July 10, 1935 [2]

1 DISTRIBUTION

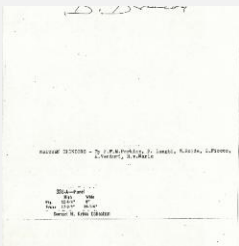
Gift to Honolulu Academy of Arts, December 09, 1961

EXTERNAL LINKS

Related National Gallery of Art Library Image Collections Record

https://library.nga.gov/permalink/01NGA_INST/1p5jkvq/alma99150603804896

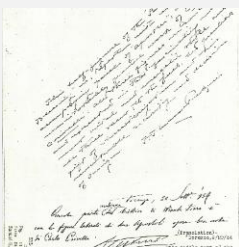
17 ARCHIVAL ITEMS



K0336A - Expert opinion by Berenson, circa 1920s-1950s

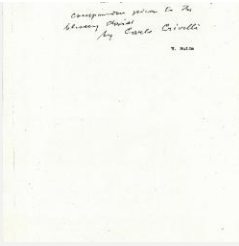


K0336A - Expert opinion by Perkins, circa 1920s-1940s



K0336A - Expert opinion by Perkins et al., circa 1920s-1940s

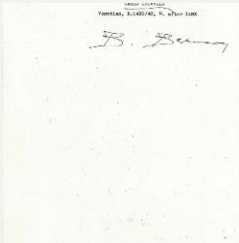
KRESS COLLECTION DIGITAL ARCHIVE



K0336A - Expert opinion by Suida, circa 1920s-1950s



K0336C - Expert opinion by Suida, circa 1920s-1950s



K0336C - Expert opinion by Berenson, circa 1920s-1950s

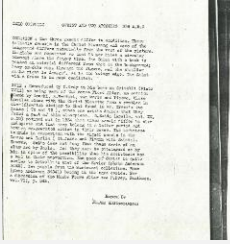


K0336C - Expert opinion by Marle, circa 1920s-1930s

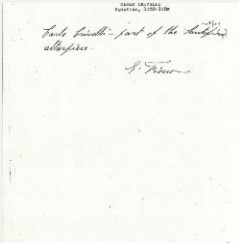


K0336C - Expert opinion by Perkins, circa 1920s-1940s

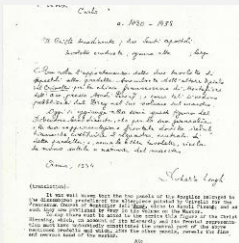
KRESS COLLECTION DIGITAL ARCHIVE



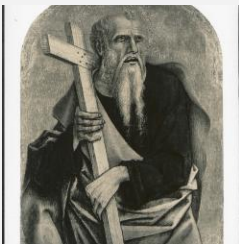
K0336A - Alan Burroughs report, circa 1930s-1940s



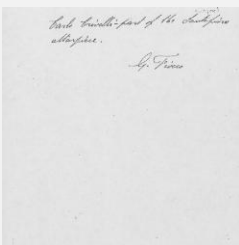
K0336A - Expert opinion by Fiocco, circa 1930s-1940s



K0336A - Expert opinion by Longhi, 1934

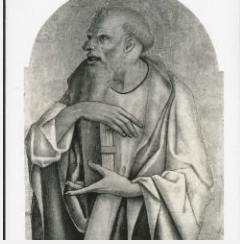


K0336A - Photograph, circa 1930s-1960s



K0336C - Expert opinion by Fiocco, circa 1930s-1940s

KRESS COLLECTION DIGITAL ARCHIVE



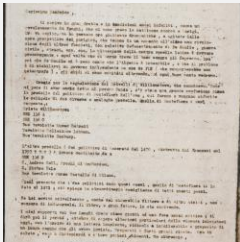
K0336C - Photograph, circa 1930s-1960s



K0336A - Condition and restoration record, circa 1950s-1960s



K0336C - Condition and restoration record, circa 1950s-1960s



K0336A - Expert opinion by Zeri, 1960

RECORD LINK

<https://kress.nga.gov/Detail/objects/3429>