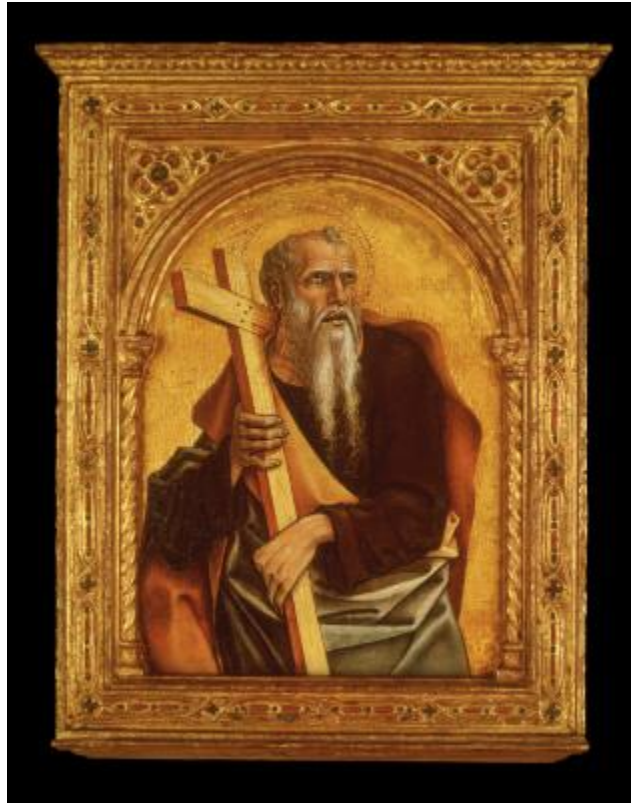


**Carlo Crivelli, c. 1430/1435-1495**  
***An Apostle***

**KRESS CATALOGUE NUMBER**

K336C

**IDENTIFIER**

3431

**ARTIST**

Crivelli, Carlo, c. 1430/1435-1495

**NATIONALITY**

Italian

**DATE**

c. 1470-75

**MEDIUM**

tempera on panel

**TYPE OF OBJECT**

Painting

**DIMENSIONS**

31.3 x 23 cm (12-1/4 x 9 in)

**LOCATION**

Honolulu Museum of Art, Honolulu, Hawaii

**PROVENANCE**

San Francesco Montefiore dell'Aso, Italy. (Pietro Vallati, Rome) by 1858. [1] Lt. Col. Hubert Cornwall Legh [1858-1926], High Legh Hall, Knutsford, Cheshire, by 1913; acquired 1913 by (Robert Langton Douglas [1864-1951], London); possibly buying for (P. & D. Colnaghi and M. Knoedler, London and New York); [2] sold half share to (M. Knoedler & Co., London and New York) on 17 February 1913; [3] (Count Alessandro Contini Bonacossi [1878-1955] Rome-Florence); sold to Samuel H. Kress [1863-1955] on 10 July 1935; gift to the Honolulu Academy of Arts (now Honolulu Museum of Art) in 1961, no. 2980.1. [1] The painting is recorded in Otto Müндler, "The Travel Diaries of Otto Müндler" ed. Carol Togneri, Walpole Society, 51 (1985): 79v. [2] Colnaghi's and Knoedler's shares in individual panels changed over this period, and this painting was probably owned entirely by Colnaghi's at time of sale. Colnaghi's no. A 1239 (with companion; formerly no. A 299 or A 300, when in series of eight); According to M. Knoedler's

# KRESS COLLECTION DIGITAL ARCHIVE

and Co. Records Getty Research Center, call number 2102.M.54, Series I, Knoedler's stock no. 13143 (series of eight). [3]  
According to M. Knoedler and Co. Records, Getty Research Center, call number 2102.M.54, Series I, Box 6, Knoedler's stock no. 13143 (series of eight).

## ACCESSION NUMBER

2980.1

## KRESS NUMBER

336C

## PICHETTO NUMBER

8703C

---

## 1 ACQUISITION

Contini Bonacossi, Alessandro, July 10, 1935 [2]

---

## 1 DISTRIBUTION

Gift to Honolulu Academy of Arts, December 09, 1961

---

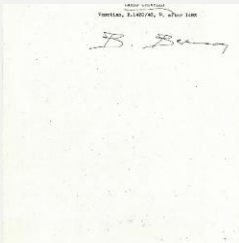
## EXTERNAL LINKS

### Related National Gallery of Art Library Image Collections Record

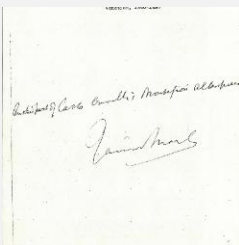
[https://library.nga.gov/permalink/01NGA\\_INST/1p5jkvq/alma99150613804896](https://library.nga.gov/permalink/01NGA_INST/1p5jkvq/alma99150613804896)

---

## 17 ARCHIVAL ITEMS



K0336C - Expert opinion by Berenson, circa 1920s-1950s



K0336C - Expert opinion by Marle, circa 1920s-1930s



K0336C - Expert opinion by Perkins, circa 1920s-1940s

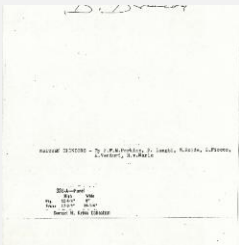
KRESS COLLECTION DIGITAL ARCHIVE



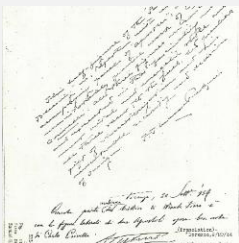
K0336C - Expert opinion by Suida, circa 1920s-1950s



K0336A - Expert opinion by Perkins, circa 1920s-1940s



K0336A - Expert opinion by Berenson, circa 1920s-1950s

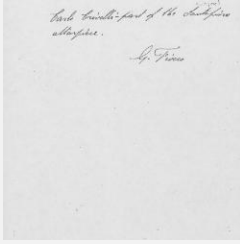


K0336A - Expert opinion by Perkins et al., circa 1920s-1940s

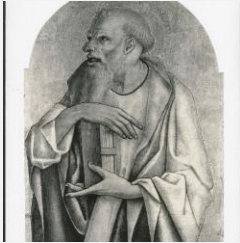


K0336A - Expert opinion by Suida, circa 1920s-1950s

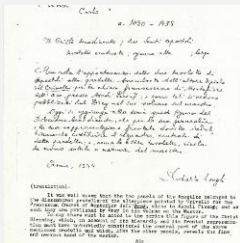
# KRESS COLLECTION DIGITAL ARCHIVE



K0336C - Expert opinion by Fiocco, circa 1930s-1940s



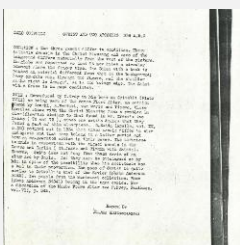
K0336C - Photograph, circa 1930s-1960s



K0336A - Expert opinion by Longhi, 1934

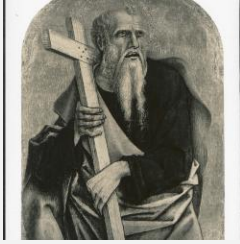


K0336A - Expert opinion by Fiocco, circa 1930s-1940s



K0336A - Alan Burroughs report, circa 1930s-1940s

# KRESS COLLECTION DIGITAL ARCHIVE



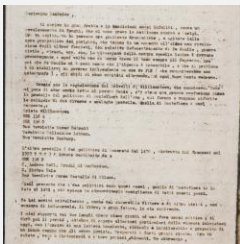
K0336A - Photograph, circa 1930s-1960s



K0336C - Condition and restoration record, circa 1950s-1960s



K0336A - Condition and restoration record, circa 1950s-1960s



K0336A - Expert opinion by Zeri, 1960

## RECORD LINK

<https://kress.nga.gov/Detail/objects/3431>