

Bramantino, c. 1460-1530
Madonna and Child



KRESS CATALOGUE NUMBER

K337

IDENTIFIER

3432

ARTIST

Bramantino, c. 1460-1530

NATIONALITY

Italian

DATE

c. 1520

MEDIUM

oil on panel

TYPE OF OBJECT

Painting

DIMENSIONS

46.3 x 36.2 cm (18-1/4 x 14-1/4 in)

LOCATION

Museum of Art and Archaeology, University of Missouri, Columbia, Missouri

PROVENANCE

(Antonio Grandi [1843-1894], Milan), by 1915. [1] (Count Alessandro Contini Bonacossi [1878-1955], Rome-Florence); sold to Samuel H. Kress [1863-1955] on 10 July 1935; gift to the National Gallery of Art in 1939; deaccessioned in 1952 and returned to the Samuel H. Kress Foundation; gift to Museum of Art and Archaeology, University of Missouri in 1961, no. 61.71. [1] Published and reproduced as Grandi collecton in Gustavo Frizzoni, "Intorno al Bramantino e alle sue presunte relazioni col Luini," *Rassegna d'Arte*, vol. II (1915):150.

KRESS COLLECTION DIGITAL ARCHIVE

ACCESSION NUMBER

61.71

KRESS NUMBER

337

PICHETTO NUMBER

8704

LEGACY NGA NUMBER

295

1 ACQUISITION

Contini Bonacossi, Alessandro, July 10, 1935 [2]

3 DISTRIBUTIONS

Gift to National Gallery of Art, June 29, 1939

Deaccession by National Gallery of Art, October 15, 1952

Gift to Museum of Art and Archaeology, University of Missouri, December 09, 1961

EXTERNAL LINKS**Related Collection Record**

<http://maacollections.missouri.edu/ArgusNET/Portal/Portal.aspx>

Related National Gallery of Art Library Image Collections Record

https://library.nga.gov/permalink/01NGA_INST/1p5jkhvq/alma991595163804896

13 ARCHIVAL ITEMS

K0337 - Expert opinion by Berenson, circa 1920s-1950s



K0337 - Expert opinion by Longhi, circa 1920s-1950s

KRESS COLLECTION DIGITAL ARCHIVE



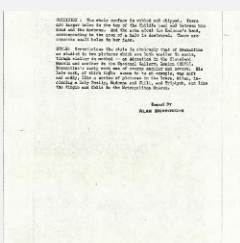
K0337 - Expert opinion by Marle, circa 1920s-1930s



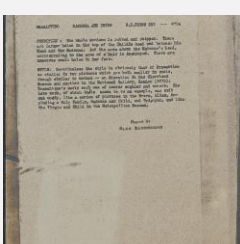
K0337 - Expert opinion by Perkins, circa 1920s-1940s



K0337 - Expert opinion by Suida, circa 1920s-1950s



K0337 - Alan Burroughs report, circa 1930s-1940s

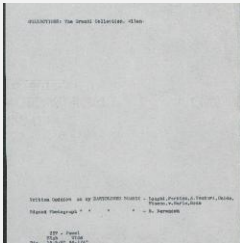


K0337 - Alan Burroughs report, circa 1930s-1940s

KRESS COLLECTION DIGITAL ARCHIVE



K0337 - Expert opinion by Fiocco, circa 1930s-1940s



K0337 - Art object record, circa 1930s-1950s



K0337 - Photograph, circa 1930s-1960s



K0337 - Expert opinion by A. Venturi, 1935



K0337 - National Gallery of Art mounted photograph, circa 1940s-1950s

