

**Follower of Francesco Francia**  
***Madonna and Child with the Infant Saint John***



**KRESS CATALOGUE NUMBER**

K356

**IDENTIFIER**

3452

**ARTIST**

Francia, Francesco, c. 1447-1517  
Anonymous Artist

**NATIONALITY**

Italian

**DATE**

1500

**MEDIUM**

tempera on panel

**TYPE OF OBJECT**

Painting

**DIMENSIONS**

73 x 57.5 cm (29-1/8 x 22-5/8 in)

**LOCATION**

Doris Ulmann Galleries, Berea College, Berea, KY

**PROVENANCE**

Count Alexander Orloff-Davidoff, Saint Petersburg, by 1896 and probably still in 1914. [1] (Count Alessandro Contini Bonacossi [1878-1955] Rome-Florence); sold to Samuel H. Kress [1863-1955] in 1935; gift 1939 to the National Gallery of Art; deaccessioned 1952 and returned to the Samuel H. Kress Foundation; gift 1961 to Doris Ulmann Galleries, Berea College, no. 140.10. [1] Fritz Harck, "Notizen über italienische Bilder in petersburger Sammlungen," *Repertorium für Kunstwissenschaft* 19 (1896): 434. Reproduced in Adolfo Venturi, *Storia dell'arte italiana*, vol. VII, pt. III, 1914:876, as Orloff-Davidoff collection. The painting is not

# KRESS COLLECTION DIGITAL ARCHIVE

among the four sold by Orloff-Davidoff at Sotheby's, London, 13 June 1934.

## ACCESSION NUMBER

140.1

## KRESS NUMBER

356

## PICHETTO NUMBER

8682

## LEGACY NGA NUMBER

306

---

## 1 ACQUISITION

Contini Bonacossi, Alessandro, July 10, 1935 [1]

---

## 3 DISTRIBUTIONS

Gift to National Gallery of Art, June 29, 1939

Deaccession by National Gallery of Art, October 15, 1952

Gift to Doris Ulmann Galleries, Berea College, December 09, 1961

---

## EXTERNAL LINKS

### Related National Gallery of Art Library Image Collections Record

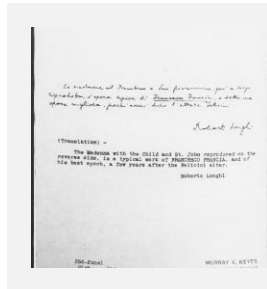
[https://library.nga.gov/permalink/01NGA\\_INST/1p5jkvq/alma991612583804896](https://library.nga.gov/permalink/01NGA_INST/1p5jkvq/alma991612583804896)

---

## 14 ARCHIVAL ITEMS



K0356 - Expert opinion by Berenson, circa 1920s-1950s



K0356 - Expert opinion by Longhi, circa 1920s-1950s

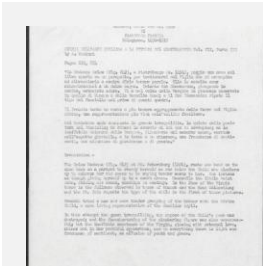
# KRESS COLLECTION DIGITAL ARCHIVE



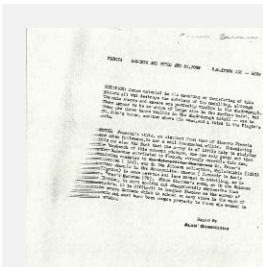
K0356 - Expert opinion by Marle, circa 1920s-1930s



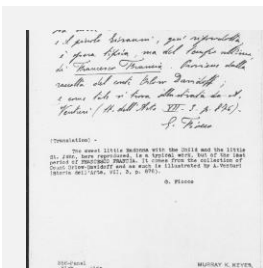
K0356 - Expert opinion by Perkins, circa 1920s-1940s



K0356 - Expert opinion by A. Venturi, circa 1920s-1930s

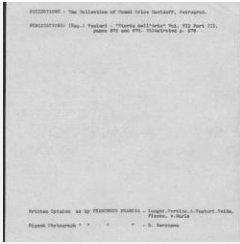


K0356 - Alan Burroughs report, circa 1930s-1940s



K0356 - Expert opinion by Fiocco, circa 1930s-1940s

# KRESS COLLECTION DIGITAL ARCHIVE



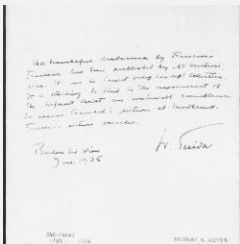
K0356 - Art object record, circa 1930s-1950s



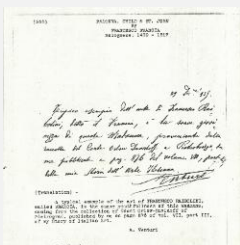
K0356 - Photograph, circa 1930s-1960s



K0356 - Photograph, circa 1930s-1960s



K0356 - Expert opinion by Suida, 1936



K0356 - Expert opinion by A. Venturi, 1935

# KRESS COLLECTION DIGITAL ARCHIVE



K0356 - National Gallery of Art mounted photograph, circa 1940s-1950s



K0356 - Condition and restoration record, circa 1950s-1960s

## RECORD LINK

<https://kress.nga.gov/Detail/objects/3452>