

Vincenzo Catena, c. 1470-1531
Portrait of Giambattista Memmo



KRESS CATALOGUE NUMBER

K357

IDENTIFIER

3453

ARTIST

Catena, Vincenzo, c. 1470-1531

NATIONALITY

Italian

DATE

c. 1510

MEDIUM

tempera on panel

TYPE OF OBJECT

Painting

DIMENSIONS

44.5 x 35.6 cm (17-1/2 x 14 in)

LOCATION

Low Art Museum, University of Miami, Coral Gables, Florida

HISTORICAL ATTRIBUTION

Bellini, Giovanni, c. 1430/1435-1516

KRESS COLLECTION DIGITAL ARCHIVE

PROVENANCE

Count Robilant Mocenigo, Venice, Italy. (Count Alessandro Contini Bonacossi [1878-1955], Rome-Florence); sold to Samuel H. Kress [1863-1955] on 10 October 1935 as Giovanni Bellini; gift to the National Gallery of Art in 1939; deaccessioned 1952 and returned to the Samuel H. Kress Foundation; gift to Lowe Art Museum, University of Miami, Coral Gables, no. 61.015.000.

ACCESSION NUMBER

61.015.000

KRESS NUMBER

357

PICHETTO NUMBER

8766

LEGACY NGA NUMBER

307

1 ACQUISITION

Contini Bonacossi, Alessandro, October 10, 1935 [1]

3 DISTRIBUTIONS

Gift to National Gallery of Art, June 29, 1939

Deaccession by National Gallery of Art, February 21, 1952

Gift to Lowe Art Museum, University of Miami, December 09, 1961

EXTERNAL LINKS

Related Collection Record

<https://emuseum1.as.miami.edu/objects/24172>

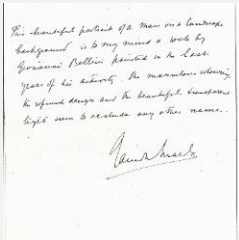
Related National Gallery of Art Library Image Collections Record

https://library.nga.gov/permalink/01NGA_INST/1p5jkvq/alma99411253804896

12 ARCHIVAL ITEMS

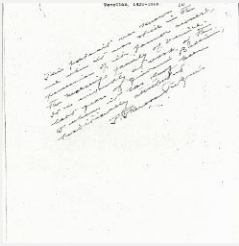


K0357 - Expert opinion by Berenson, circa 1920s-1950s

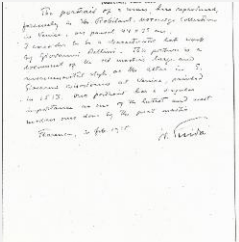


K0357 - Expert opinion by Marle, circa 1920s-1930s

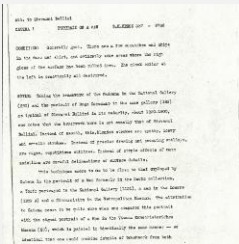
KRESS COLLECTION DIGITAL ARCHIVE



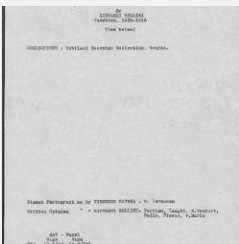
K0357 - Expert opinion by Perkins, circa 1920s-1940s



K0357 - Expert opinion by Suida, circa 1920s-1950s



K0357 - Alan Burroughs report, circa 1930s-1940s

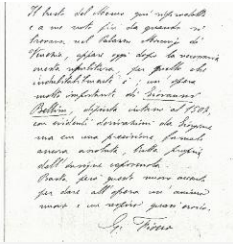


K0357 - Art object record, circa 1930s-1950s

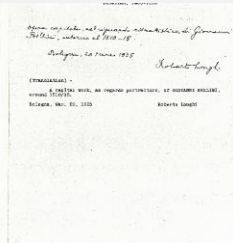


K0357 - Photograph, circa 1930s-1960s

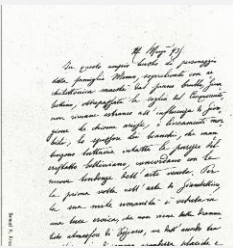
KRESS COLLECTION DIGITAL ARCHIVE



K0357 - Expert opinion by Fiocco, 1935



K0357 - Expert opinion by Longhi, 1935



K0357 - Expert opinion by A. Venturi, 1935



K0357 - National Gallery of Art mounted photograph, circa 1940s-1950s



K0357 - Condition and restoration record, circa 1950s-1960s

RECORD LINK

<https://kress.nga.gov/Detail/objects/3453>